

# NIGHTHAWK-BTX™

Most Advanced Version of Viken's Handheld X-Ray Backscatter Imaging System



## BTX

BACKSCATTER  
TRANSMISSION  
XRF Pb DETECT

### MULTI MODALITY

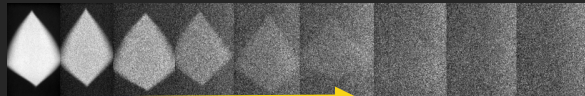
#### SAFER THAN EVER

Targeted X-ray shielding to optimize image and reduce undesired scatter.

#### SEE DEEPER & DARKER

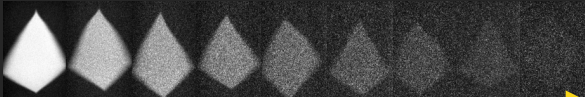
Improved penetration & resolution.

#### Original Nighthawk/HBI Series



5mm

#### New Nighthawk-BTX Series



8mm

Upgrades, tools, and supplemental accessories sold separately.  
Tx and XRF modalities require featured upgrades and accessories.

### +KEY UPGRADES

**Pb TRAP DETECT** - Don't second guess the results.  
Use true XRF technology to automatically identify lead traps.

### +PERFORMANCE IMAGING TOOLS

**WINGBAR TABLET** - Remote 10.1" tablet

**BROADWING-DTX (NEW!)** - Quick connect on the fly dynamic Tx imaging. See what you've been missing without missing a beat. Fits in places traditional panels cannot. Avoid panel setup and positioning time.



The **NIGHTHAWK-BTX** is the only series compatible with **BROADWING-DTX**.  
Request a datasheet for more details.

### +SUPPLEMENTAL ACCESSORIES

- TACTICAL BACKPACK
- SUNSHIELD
- SPARE BATTERY PACK
- 1, 2, 4, AND 6-BAY CHARGERS

Featured

# NIGHTHAWK-BTX™

## COMMON NIGHTHAWK-BTX™ SPECIFICATIONS

All versions of the Nighthawk-BTX series scanners include the following standard options:

BATTERIES	14.4V (YELLOW) Battery Pack 120 kV = 4-6 hours   140 kV = 3-5 hours at typical duty cycles	CAMERA	5MP Color Front Facing Camera
DISPLAY	6in   High Resolution   Color   Touch LCD	SCANS	Up to 16in (41cm) / s   Max Scan 30s
OPERATING CONDITIONS	-4°F (-20°C) to 140°F (60°C)	SAFETY	Configurable Single/Dual Trigger Modes Top, Side, and Front X-ray Indicator Lights X-Ray Beam Arming Interlocks Front Facing Flashlight Dual X-ray Demarcation Lasers
CONNECT	WIFI / WIFI Direct Bluetooth GPS USB-C Dual Front Accessory Interfaces 4G/5G Compatible with Hotspot*	SYSTEM	Android Based Application
IMAGING	5 Color Viewing Modes Automatic Contrast Optimization Manual Contrast Adjust Image Annotation Suspicious Image Flag 4 Image Enhancement Filters	COMPLIANCE	ROHS   CE (pending)
		STANDARD ACCESSORIES	Lockable Rolling Weatherproof Case Adjustable Safety Strap System Check Shield 2x Battery Packs 110/220V AC 1-Bay Battery Charger Interface Cable User Guide
		SUPPORT	Complimentary Software Updates Training Services Available Extended Warranty Available

\*Hotspot / Cellular plan not provided by Viken.

## MODEL SPECIFIC SPECIFICATIONS

MODELS	NHBTX-120W5	NHBTX-120W7	NHBTX-140W7A	NHBTX-140W7B	NHBTX-140W10
TUBE	120kV / 5W	120kV / 7W	140kV / 7W		140kV / 10W
DIMENSIONS	W=282 / H=199 / L=265 [mm]		W=282 / H=199 / L=278 [mm]		
WEIGHT*	9.5 lb [4.3kg]	11.5 lb [5.2kg]	10.7lb [4.9 kg]	11.5lb [5.2kg]	10.7lb [4.9kg]
PENETRATION	5.5mm	6mm	7mm	7mm	7.5+mm
COST	\$\$	\$\$\$	\$\$\$	\$\$\$	\$\$\$\$

\*Weight includes battery and +Pb Threat detection upgrade..

## CONFIGURABLE UPGRADES & OPTIONS

Customized at the factory for your needs

+Pb TRAP DETECT UPGRADE	Automatic True XRF Lead Detection and Identification
TRIGGER MODE	Single or Dual Trigger Type *
WIRELESS	Wireless Enabled / Disabled **

\* Single trigger mode not available in all countries.

\*\* Wireless can be physically disabled for sensitive environments (EOD).

## MODEL NUMBER BREAKDOWN

**NHBTX-AAABCD**

SERIES NAME	TUBE VOLTAGE 120 = 120kV 140 = 140 kV	VARIANT* A / B *Only for 140W7 Option
DETECTOR TYPE W = Wide Area	TUBE POWER 5 = 5W 7 = 7W 10 = 10W	

For more information on **Nighthawk-BTX™** contact us at [sales@vikendetection.com](mailto:sales@vikendetection.com)