

China National Single Window

Aviation Logistics Public Information Platform

PRESENTED BY Yuyan Ruan
from Shenzhen Customs



PART 1

China National Single Window (CNSW)

ABOUT CNSW

China National Single Window(CNSW) is a “one-stop” platform for trade services.



The Layout of CNSW

INTERNATIONAL AIR LOGISTICS

ADVANTAGES

✓ Efficiency

✓ Flexibility

BOTTLENECK

- Low-efficiency of Inter-connectivity
- Tedious Paper-based Operations
- Repetitive Manual Work
- Limited Visibility and Traceability in Air Logistics





PART 2

Aviation Logistics Public Information Platform

AVIATION LOGISTICS PUBLIC INFORMATION PLATFORM



Login Page of "Aviation Logistics Public Information Platform"

In 2021, the E-Port Data Center of China Customs developed the "Aviation Logistics Public Information Platform" based on the CNSW.

Since 2022, the platform has been put into use as an official pilot project in Shenzhen Customs. It is completely free to use for aviation-related market entities such as airlines, cargo terminals, freight forwarders, and cargo owners .

GOOD EXPERIENCE FROM SHENZHEN CUSTOMS



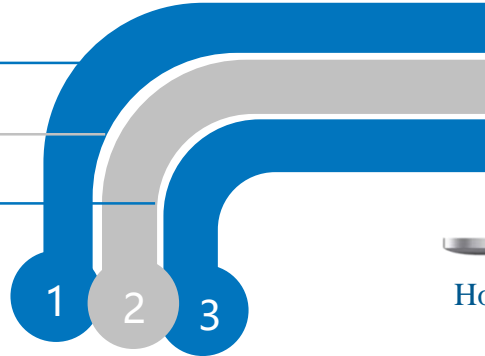
190
enterprises



2000+
appointments for
customs inspection



560,000
electronic waybills



Home Page of "Aviation Logistics Public
Information Platform"

GOOD EXPERIENCE FROM SHENZHEN CUSTOMS



on-site business visits
have been reduced from
four times to only once,
a reduction rate of 75%.

-75%

1

on-site business visits



the inspection time has
been reduced to about 30
minutes.

30
min

Customs inspection time

PLATFORM SERVICES

AIR CARGO BOOKING



- a) Documentation import
- b) Booking management
- c) Manifest inquiry

DATA ENTRY

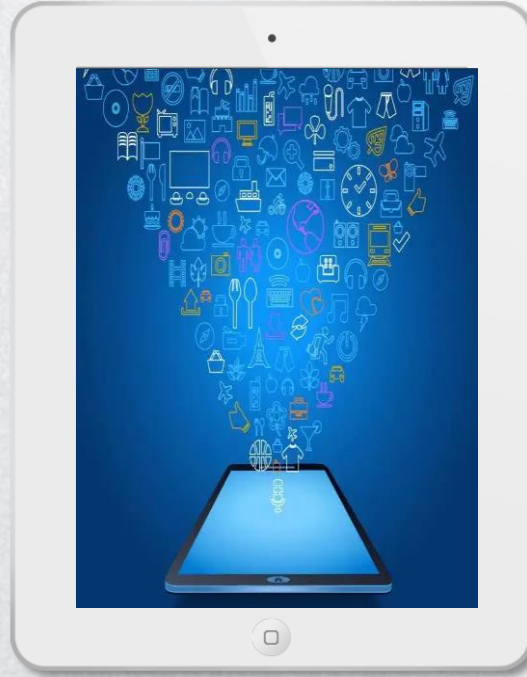


- a) Integration of data
- b) Entry security declaration
- c) Electronic waybill

CARGO WEIGHING



- a) Weighing data input
- b) Weighing data sharing
- c) Weighing data inquiry



DATA EXCHANGE



- a) Uploading cargo data from users
- b) Sharing data to users

DATA MAINTENANCE



- a) Air cargo information
- b) General information
- c) Code parameter

PANORAMIC DISPLAY



- a) Air cargo tracking

A STUDY CASE



Air Cargo From Belgium To China



Data Exchange

The players involved can share electronic waybill data including Freight Waybill (FWB) and Flight House Waybill (FHL) through the platform.



Documents Submission

The freight forwarder can upload the documents in batches for customs clearance.



Online Appointment

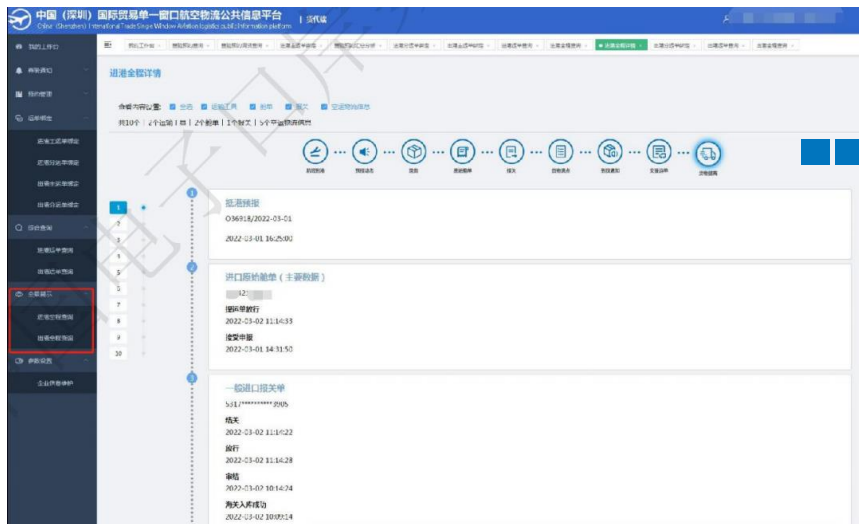
If the cargo is selected for examination, the freight forwarder can make an appointment online, and the Customs can carry out inspection orderly.



Real Time Monitoring

Each step of the whole process described above can be tracked by the "panoramic display" in real time.

PANORAMIC DISPLAY



The Entry Process for Imports

Flight Arrival

Flight Status Forecast

Cargo Handling

Cargo Manifest

Customs Declaration

Tallying

Arrival Notice

Waybill Handover

Cargo Delivery

3 EFFECTS OF THE PLATFORM



Reduce
Business
Costs



Improve Customs
Efficiency



Facilitate
International
Trade



ENTERPRISE FEEDBACK

TRADITIONAL OFFLINE MODE

many of the processes depend on human intervention.



ONLINE MODE

process the trade by “one entry, one declaration, and one-stop acquisition” .

LOOKING FORWARD

A

To improve the functions of the Aviation Logistics Public Information Platform.

B

To summarize and promote Shenzhen Customs experience to other airports in China.

C

To strengthen the cooperation with other countries in "single window".



THANK YOU

✉ E-mail: bahasa@126.com

PRESENTED BY Yuyan Ruan
from Shenzhen Customs