

BMW
GROUP



ROLLS-ROYCE
MOTOR CARS LTD

WCO GREEN CUSTOMS CONFERENCE.

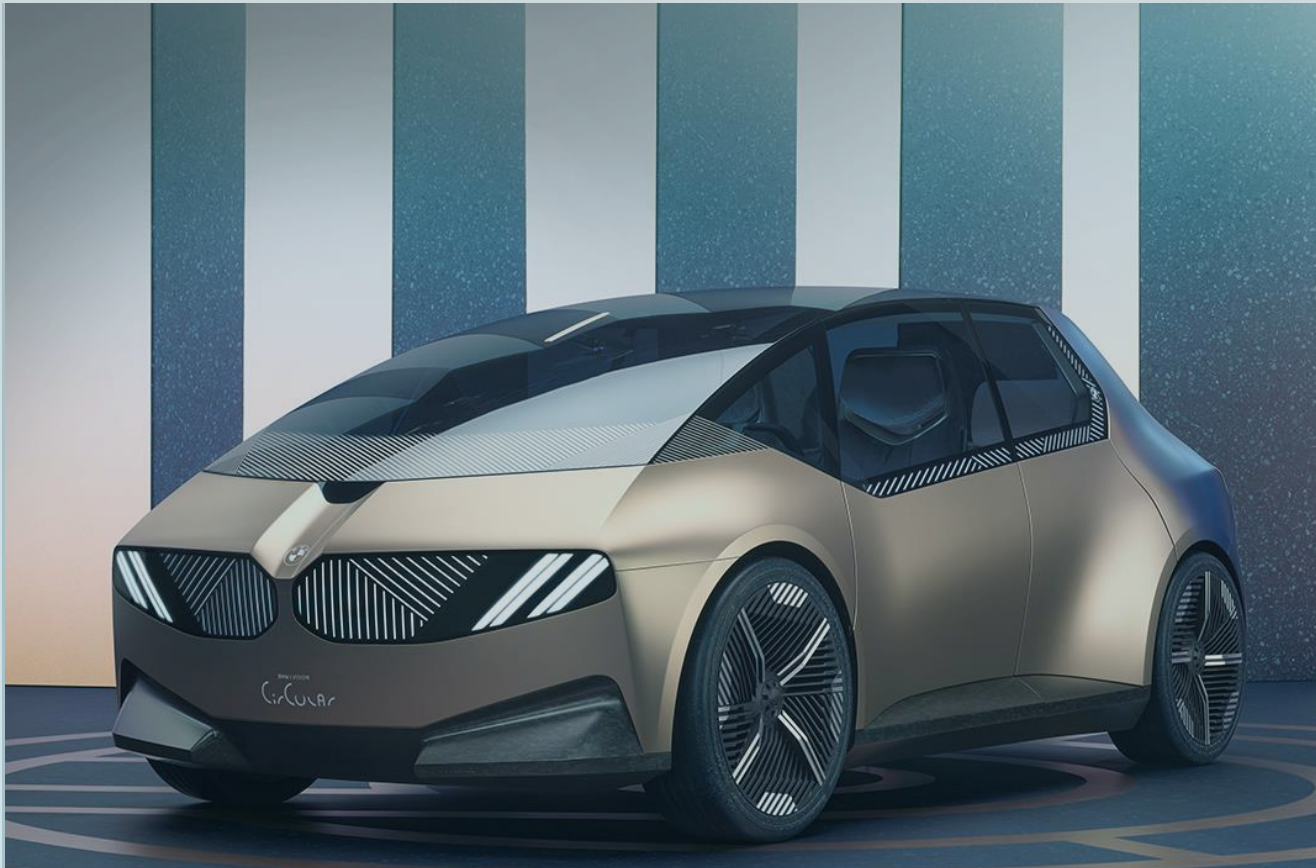
HOW CAN VALUE CHAIN TRANSPARENCY FOSTER CIRCULAR ECONOMY?

STEPHAN FREISMUTH, DIRECTOR EU TRADE, TAX AND FINANCE POLICY.
JUNE 2022.



WHAT ARE THE PRECONDITIONS TO FOSTER CIRCULAR ECONOMY AND TO MANUFACTURE THE GREENEST PRODUCTS IN THE EU?

BMW Group focuses on principles of a circular economy.
„Secondary first“ requires initiatives to develop the market.





THE FIRST OPEN & COLLABORATIVE DATA ECOSYSTEM



Lighthouse Project for the Automotive Industry

We build data driven value chains

We make applications interoperable

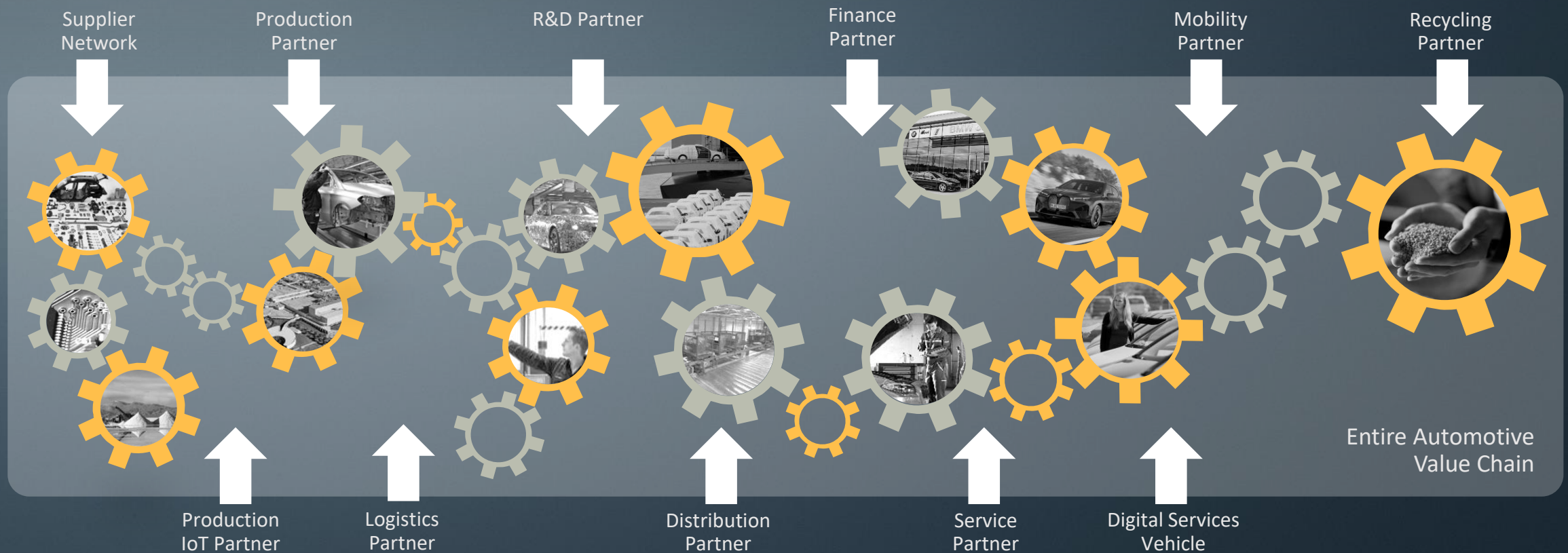
We focus on time to value (e.g. onboarding)

We guide and support our user groups

We are the
fitness program
for the automotive industry & tap into
new value pools

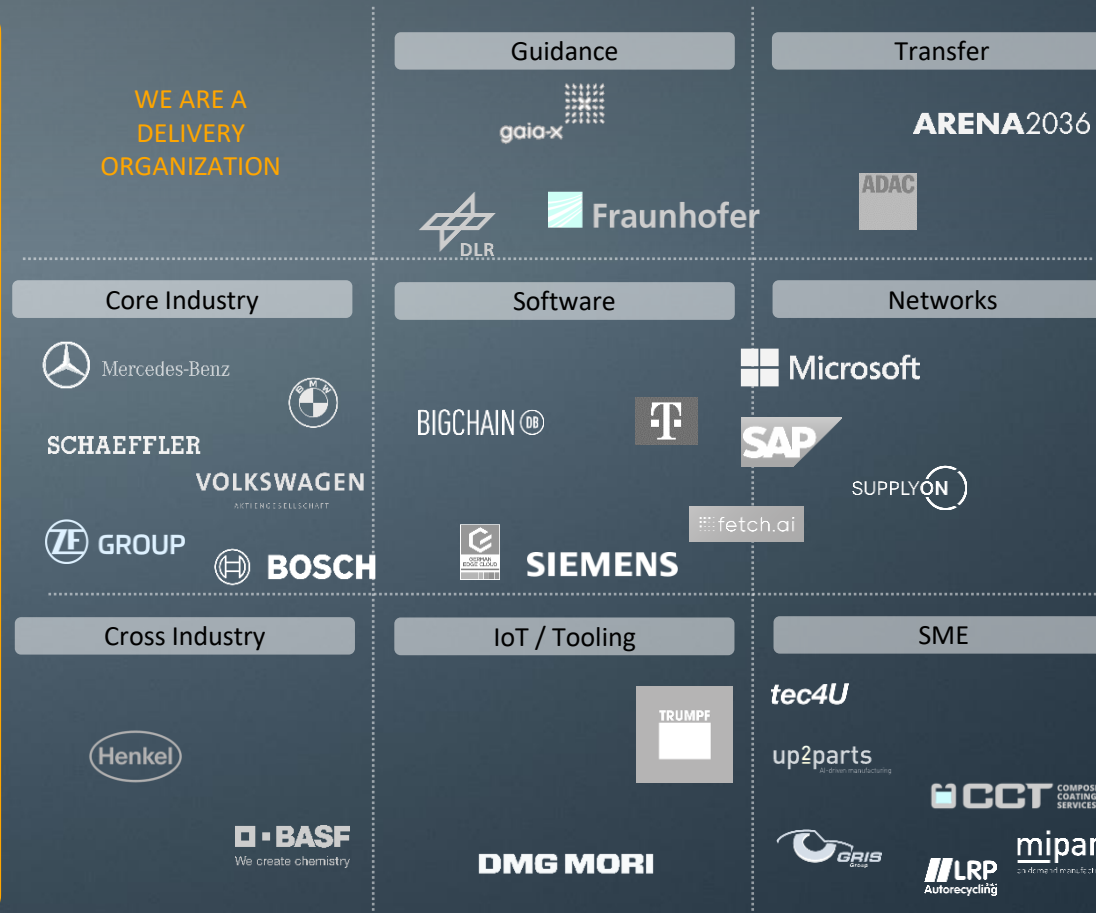
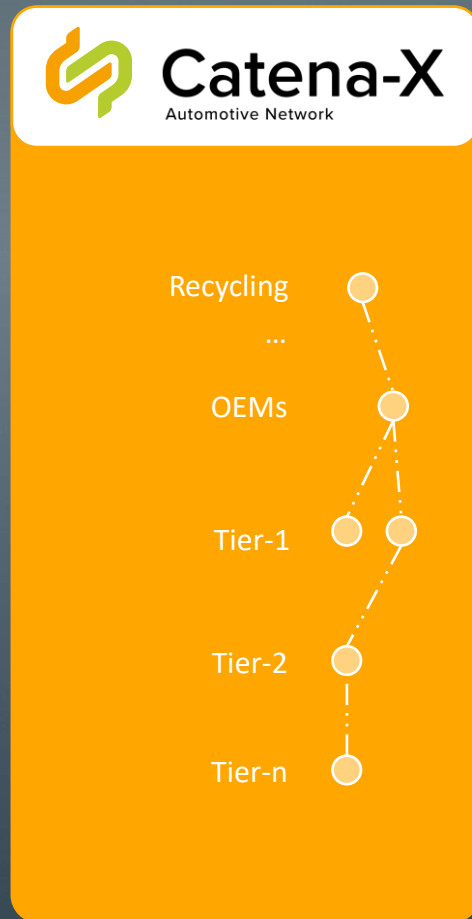


We Create the First Data-Driven Value Chain Incorporating all Participants and Steps





Industry Consortium – Kickstarter Team



Timeframe/project outcome
08/2021 – 07/2024

10x
Use Cases with immediate
value contribution

1st
Gaia-X / IDSA compliant
operating system

2-4 months
Time to value
to onboard partners



At Catena-X, we capture the entire automotive value chain CO₂ emission, so we can truthfully measure, report and reduce carbon emissions.

We digitize sustainability indicators to monitor, identify and remedy humanitarian and environmental issues in the entire automotive supply network.



Enabling better due-diligence
through understanding supply
chain risks.



Reducing carbon
emissions through
understanding
scope 3 emissions.



Credibility and compliance
through transparency and world-
class reporting.

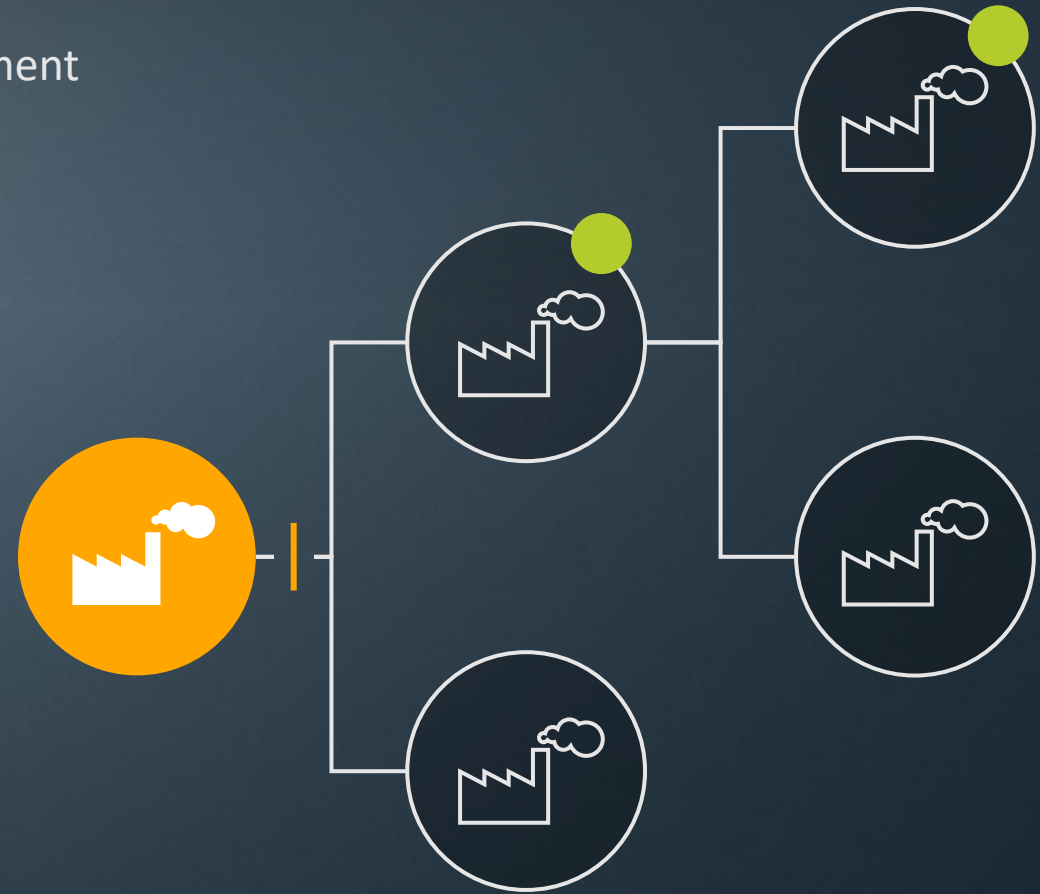


The Transparency Issue

A major challenge in **Product Carbon Footprint (PCF)** Assessment

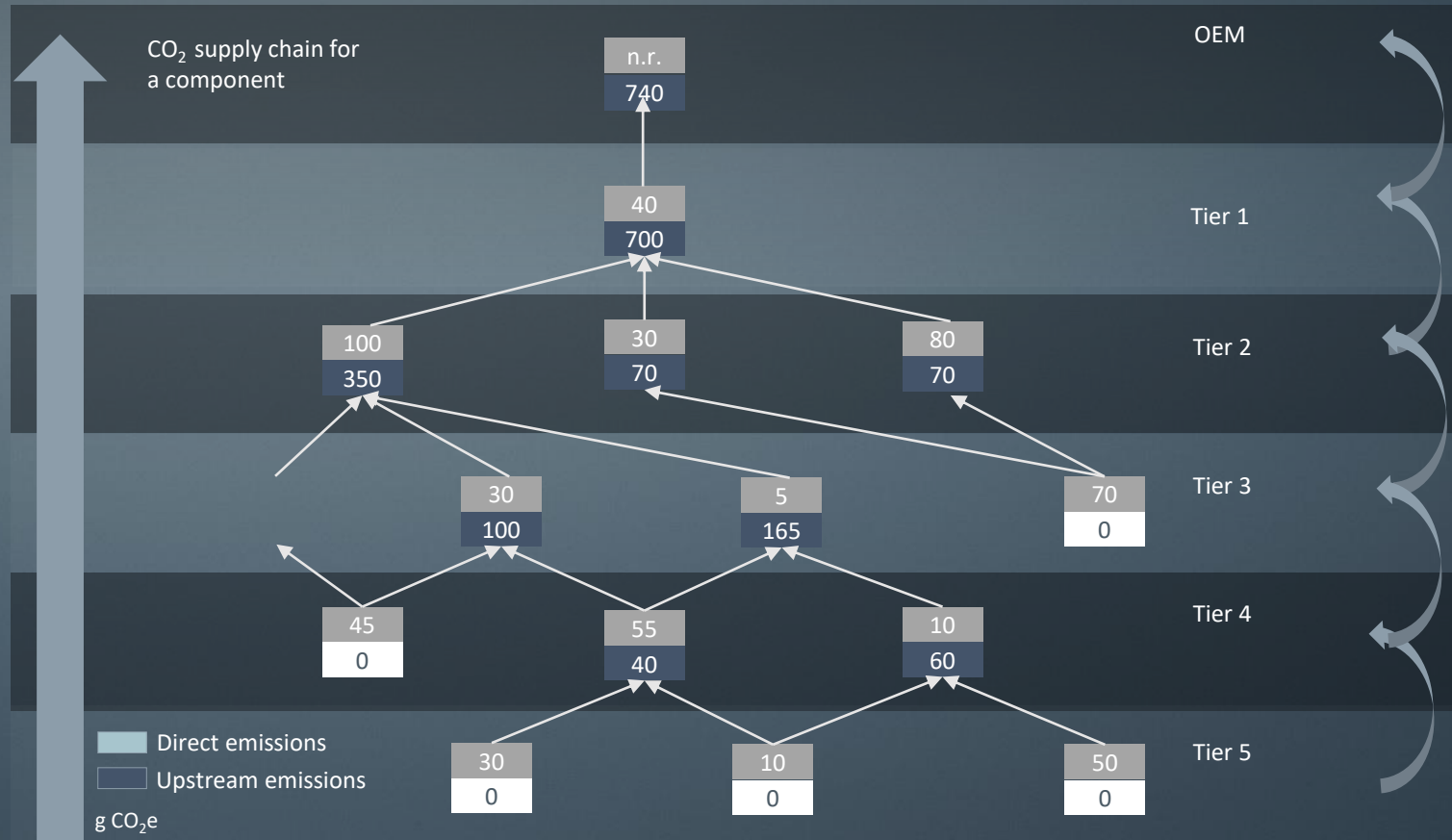
For more than 90% of the cradle-to-gate PCF emissions, an OEM has no specific data.

The production of a car is a joint activity of a complex network of suppliers. For economic and antitrust reasons a fully transparent network is not feasible. We need to find more intelligent ways using & analysing carbon emissions data.





Catena-X Captures CO₂ Data from the Entire Value Chain



Capture emissions based on real **processes and site data** to measure, reduce and report real data



Identification of hotspots



Definition and implementation of measures in the n-tier chain



Credible reporting of achieved goals

»»» Goal: Replace average values from databases with **confirmed data**



HOW CAN CUSTOMS AUTHORITIES CONTRIBUTE TO FOSTER CIRCULAR ECONOMY AND TO MAKE VALUE CHAINS MORE SUSTAINABLE?

Import Procedures:

Facilitate import clearance for waste and scrap to foster highly efficient recycling and production of secondary raw materials in the EU.

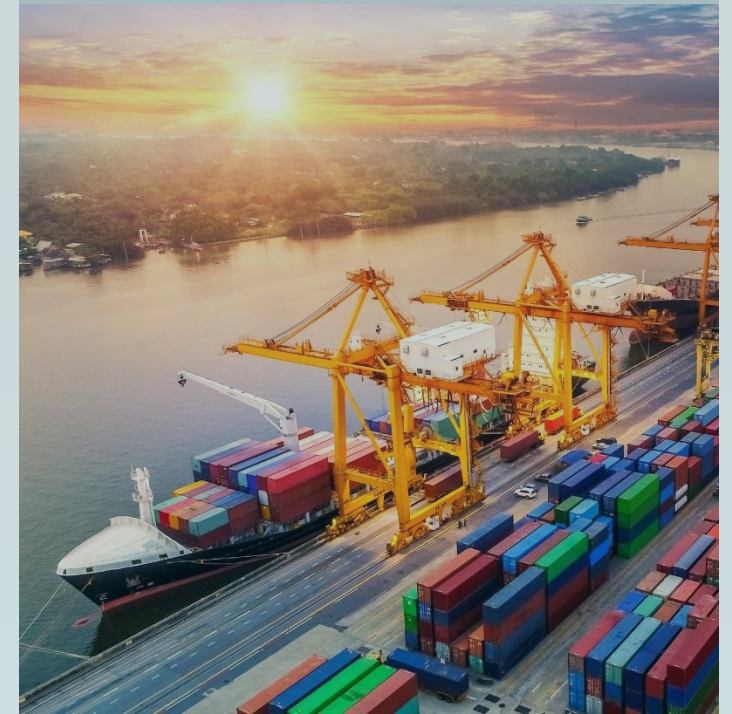


Self Assessment:

Enable self-assessed customs clearance (border crossing) for Authorised Economic Operators.

Customs Tariff:

Adapt outdated customs tariff for enabling tariff free import of waste and scrap.



Free Trade Agreements:

Facilitate rules of origin for recycled materials, remanufactured, renewed and repurposed goods in line with the objectives of the circular economy.

THANK YOU FOR YOUR ATTENTION!

