

WINDWARD[®]
The Power of Maritime AI

Maritime AI for Law Enforcement

TO LEARN MORE, VISIT [WINDWARD.AI](https://www.windward.ai)

Maritime AI for Law Enforcement

As the marine environment becomes increasingly more complex, law enforcement must look to tools that can see through these complexities and deception to stay ahead of bad actors. By adopting a dynamic and holistic approach to maritime risk, border security entities will be able to quickly expose and investigate maritime crimes as they develop and ensure the necessary resources are in position prior to the threat entering respective territorial waters.

Protect your borders with Maritime AI

Windward is the leading Maritime AI company, providing an all-in-one platform for maritime domain awareness needs. By leveraging our expertise and deep learning algorithms, we go beyond connecting static data points and provide context behind every maritime entity, to best mitigate risk from a variety of aspects – security, compliance, and safety. With our AI-driven insights and actionable real-time recommendations, we support you in making mission-critical decisions and responding faster to any cross-border anomalies.



Predict evolving threats

Customize automatic alerts based on behavioral analysis to identify developing threat patterns in your areas of interest.



Go beyond AIS

Preserve anonymity while investigating with unique digital identities resilient to spoofing and identity tampering attempts.



Optimize collaboration

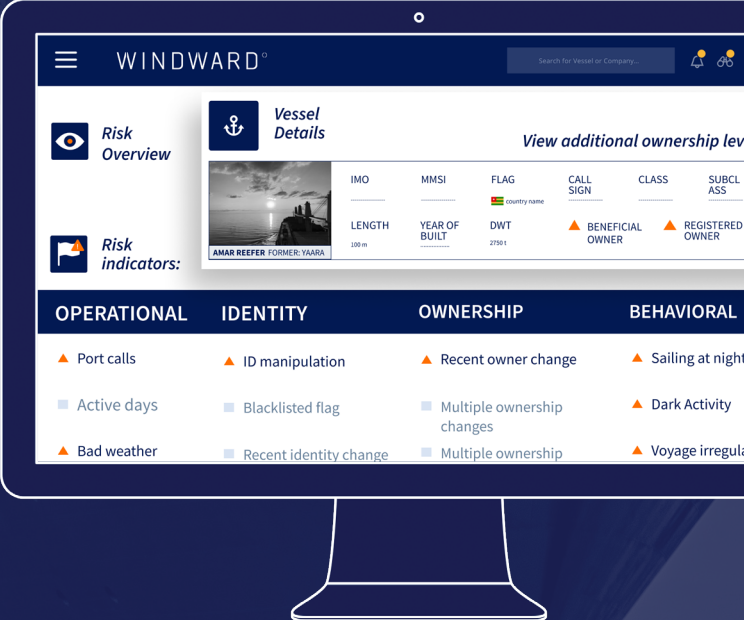
Leverage unclassified data to share insights across multiple levels of government and with partner nations using vessel reports, shareable links and in-platform comments.



Streamline integration

Integrate insights and risk recommendations into current platforms with quick and scalable onboarding that does not require extensive training like existing GOTS systems.

Trusted By:



* Get bottom-line risk recommendations and relevant risk indicators with Windward's vessel profile