

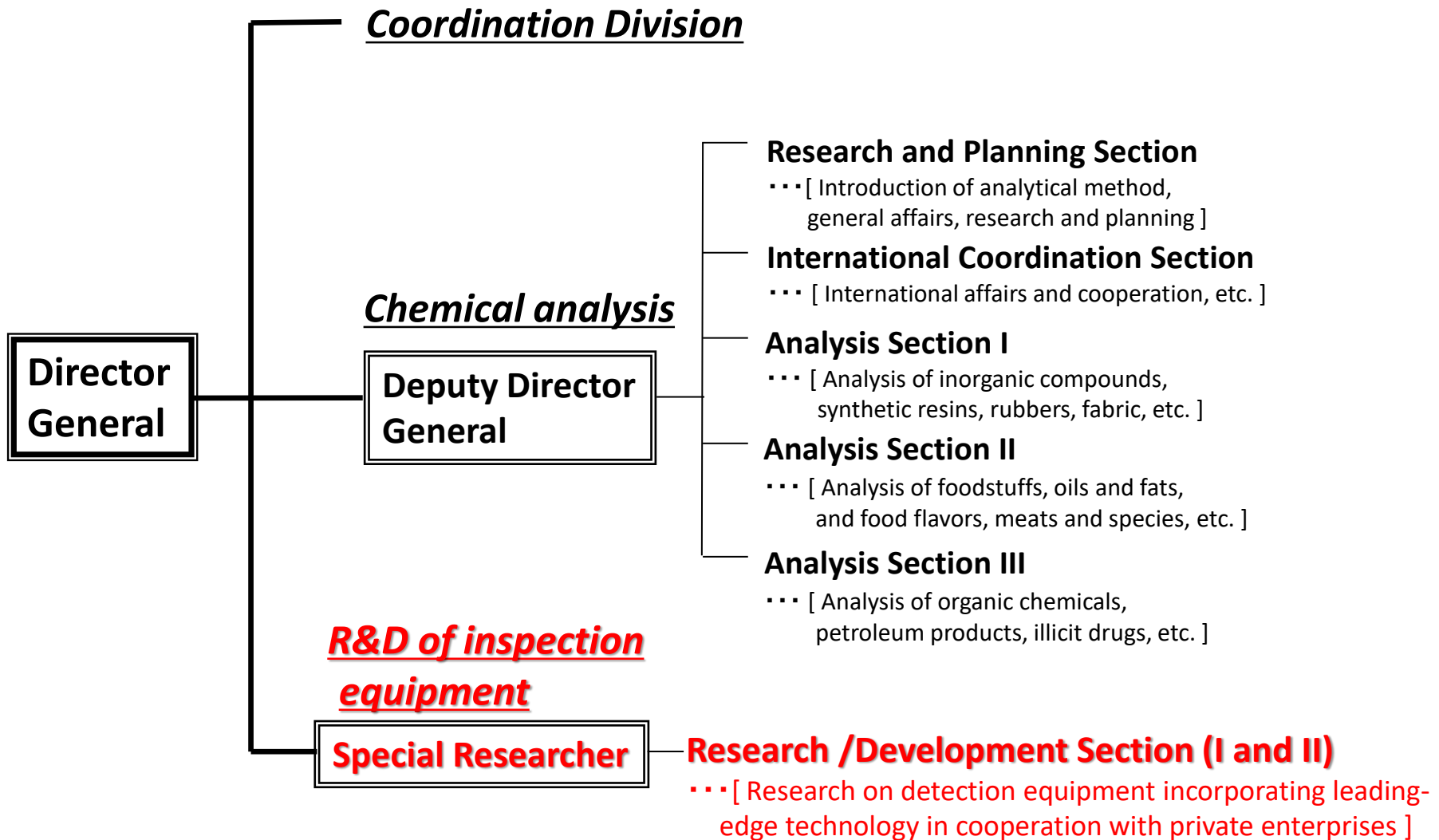
Japan's Approach on Research and Innovation

WCO Technology Conference
Oct 2022

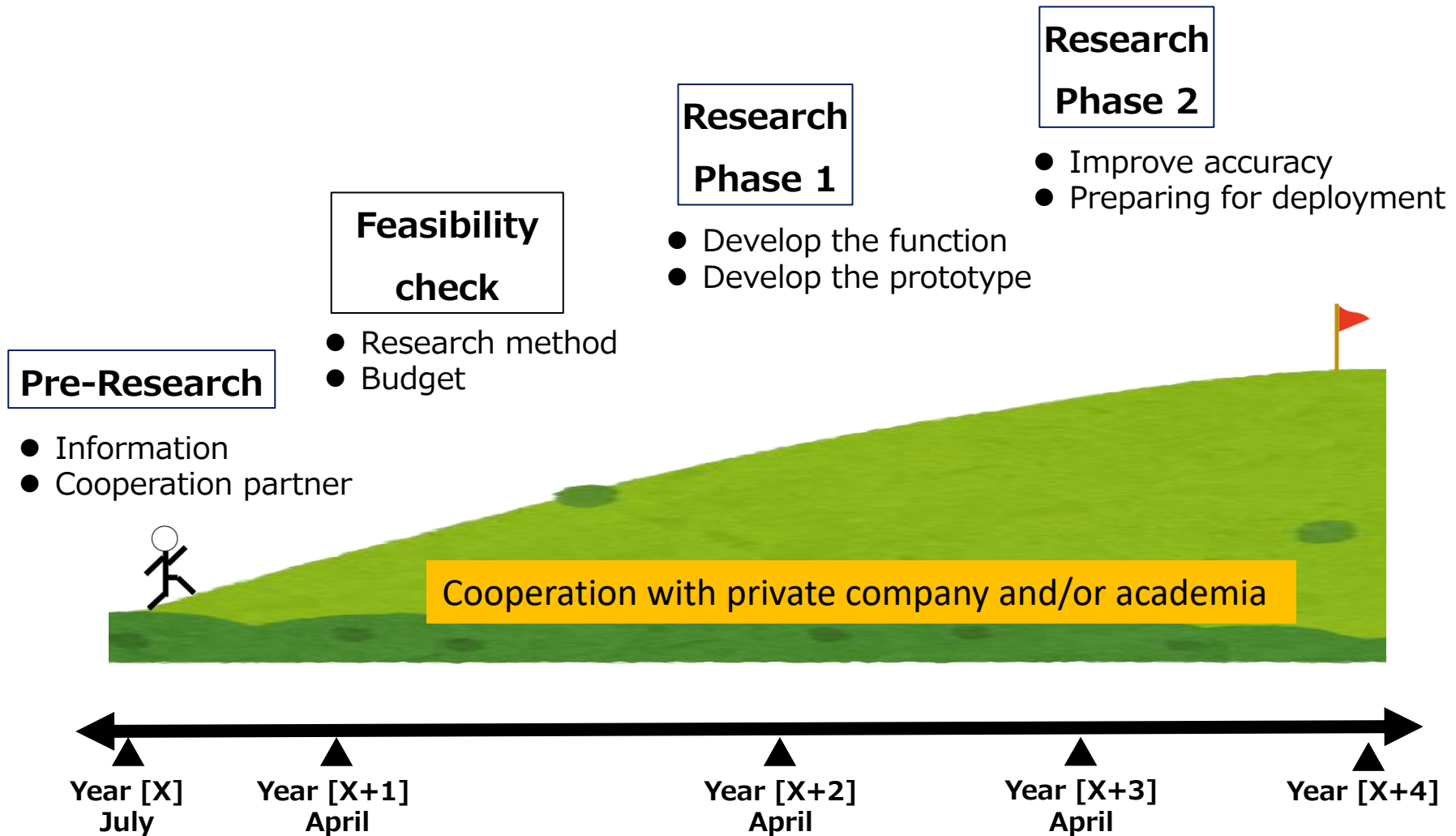
Shinji ODA, Japan Customs



Organizational Structure of Central Customs Laboratory Japan



Roadmap of Research



External Evaluation System

Research Evaluation Meeting

- Started from 2009
- Scope: To evaluate the result of research, specify the task
- Held once in a year (June)
- Invite more than 3 professionals for the research area
- Professionals evaluate the CCL's research by each phases
- The meeting result published on web-page of CCL



*only when the research
need to be continued
more than 5 years

Liquid Scanner

- Applicable for translucent packaged containers, for example glass or plastic bottles, to detect illicit drugs and explosives in liquid without opening them.
- Measurement time : Around 10 seconds.
- Developed by an analytical equipment manufacturer under a contract research sponsored by the Central Customs Laboratory Japan.



- Dimensions : 250(W) x 260(D) x 270(H) mm
- Weight : 7.5kg
- Measurement : Irradiate Near InfraRed light
- Types : Stationary

- Controlled substances, including narcotics and explosive, are shown in **red color**.
- Not controlled substances are shown in **green color**.

