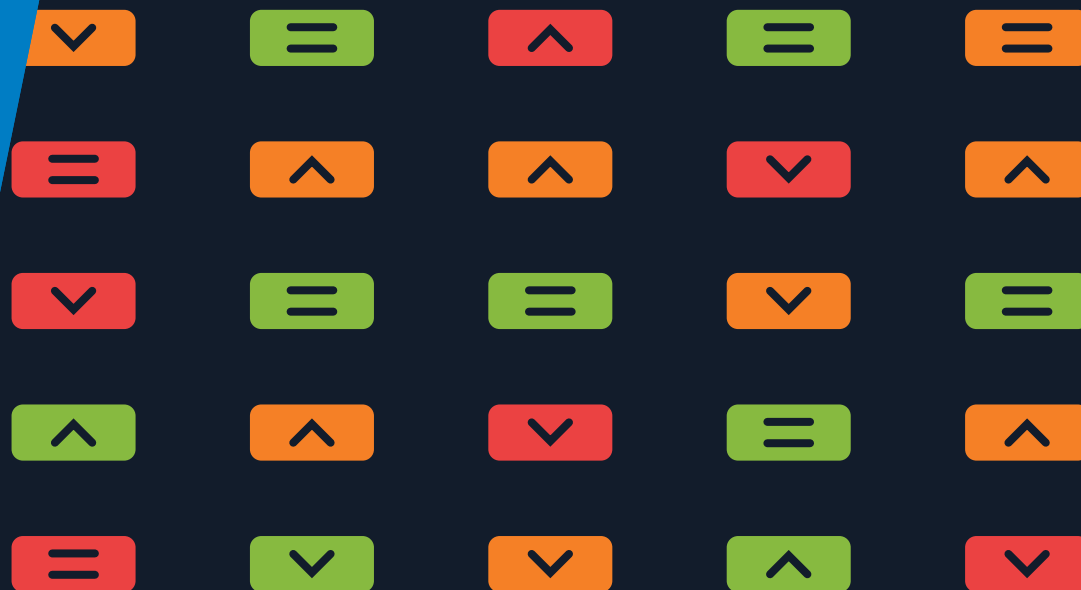




CLIMATE SIGNS

Climate Signposting Platform Driven
by Dynamic, Real-World Data



Navigate a Changing Climate

With Ortec Finance's Climate & ESG Solutions

Climate SIGNS signposts the climate pathway the world is currently on.

Climate SIGNS is an information platform for anyone interested in an independently researched view on the world's current climate trajectory. It visually tracks, analyzes and displays indicators that enable you to monitor actual global progress against two climate scenarios: our Paris Transition Pathway and Failed Transition Pathway.



The indicators inform you about:

- Emissions Signals
- Transition Signals
- Physical Risk Signals



Key Strengths

Comprehensive platform with interdisciplinary, cross-sector use cases



Science-based, objective methodology.



Builds on existing economic, financial, and climatological models.



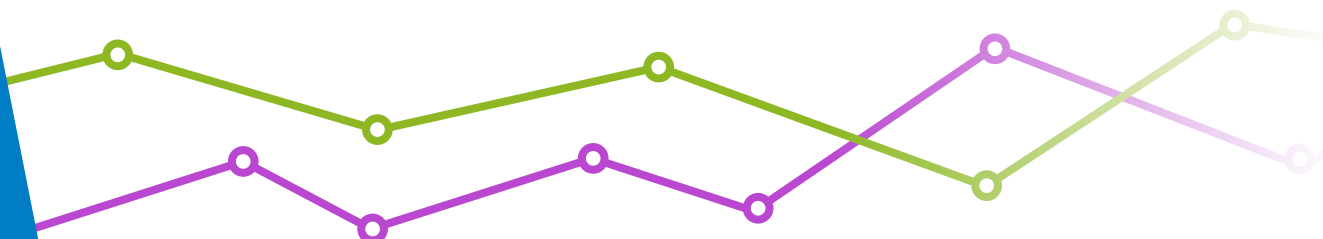
Global sources.



Precise, identifies relevant indicators per region.



Easy to use.



A Multi-Purpose Tool

To signpost where the world stands with regards to climate change

Questions Climate SIGNS can help you answer:

Likelihood Analysis:

Understand the relative likelihood of a given climate scenario actually occurring.

Strategic Investment Professionals:

- From a real-world perspective, what climate scenario seems more likely and therefore can guide climate-aware SAA?

RI & ESG Professionals:

- Do my portfolio's decarbonization targets need to be adjusted?
- Do interventions (engagement, level of ESG integration) need to be stepped up? Which regions should I be prioritizing?
- What is the right balance between adaptation and mitigation in my interventions?
- What is the actual global and regional speed of change?

Risk Managers:

- How do my climate scenarios relate to what is actually happening in the real world?
- What is the gap between global targets and actual progress as a key climate transition risk indicator for risk monitoring purposes?
- For what climate reality should I be preparing for? What safeguards should I have in place?

Boards:

- How do I motivate a sense of urgency for climate action?
- How can we showcase our knowledge of current climate affairs to stakeholders?



A Multi-Purpose Tool

To signpost where the world stands with regards to climate change

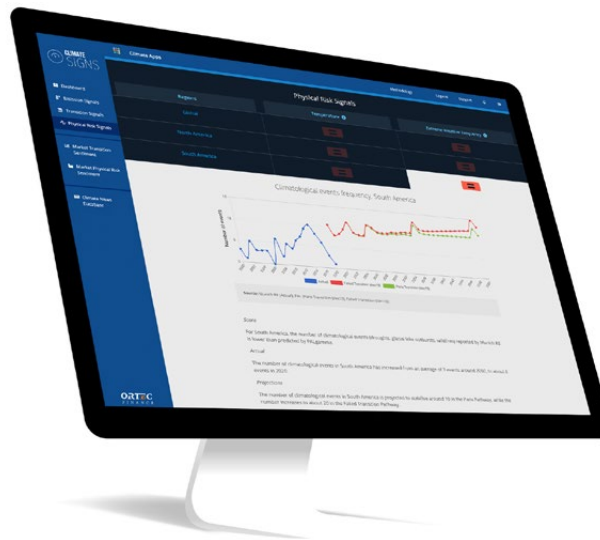
Questions Climate SIGNS can help you answer:

Gap Analysis:

Independently motivate to what extent the world is on track to meeting climate goals.

Policy makers, Non-Governmental Organizations & Academics:

- What is the actual state of climate policy regionally & globally?
- What is the state of the world in regards to climate change-how can I get a comprehensive overview?



The Scenarios

In partnership with Cambridge Econometrics



We've defined two global warming scenarios against which we plot the trajectory the world is currently on:



Paris Transition Pathway



Failed Transition Pathway

Climate SIGNS is divided into three signals:



Emissions Signals

Emissions Signals track whether regions have made progress in emissions reduction and the current level of emissions.

CO₂ Emissions: Yearly actual CO₂ emissions are compared to emissions in the Paris Transition Pathway and the Failed Transition Pathway.

Carbon Intensity: Reflects the relationship between economic growth (GDP) and CO₂ emissions. In Climate SIGNS, the actual carbon intensity is compared to the projected carbon intensity of the two climate pathways. It tracks the rate of 'decoupling' of growth and emissions.



Transition Signals

Transition Signals provide an overview of how the world and various regions are progressing towards a low-carbon economy.

Carbon Price: Carbon price is measured in dollars and is the price for avoided or released CO₂ or other greenhouse gas emissions. The actual carbon price is compared to the projected carbon price in the two different climate pathways.

Policy Overhang: Reflects a region's actual progress on their own (unconditional) emissions targets set under the Paris Agreement via their Nationally Determined Contributions (NDCs). Unconditional targets are considered voluntary and implementable without outside support.

Policy Gap Indicator: The difference between a region's emissions reduction target and the required target under the Paris Transition Pathway. The larger the difference, the greater the risk of a disruptive transition.

Corporate Transition Commitment: Indicates the proportion of corporations committed to aligning with the Paris Agreement. It is the ratio of corporations that have signed up for the Science Based Targets initiative to the total number of companies in the iShare MSCI ETF for each region; the smaller the ratio, the greater the transition risk.

The Scenarios

In partnership with Cambridge Econometrics



Physical Risk Signals

Physical Risk Signals provide an indication of critical climate change impacts

Temperature: Based on scientific data (NOAA), we track the actual level of average global and regional temperature rise compared to the projections from Cambridge Econometrics.

Extreme Weather Frequency: Based on our Climate PREDICT extreme weather risk & impact model, this indicator looks at the change in extreme weather occurrences across different regions.

Sea Level Rise: Monitors global increase in sea level and compares this to different scenario projections, understanding the extent to which sea levels are projected to rise.

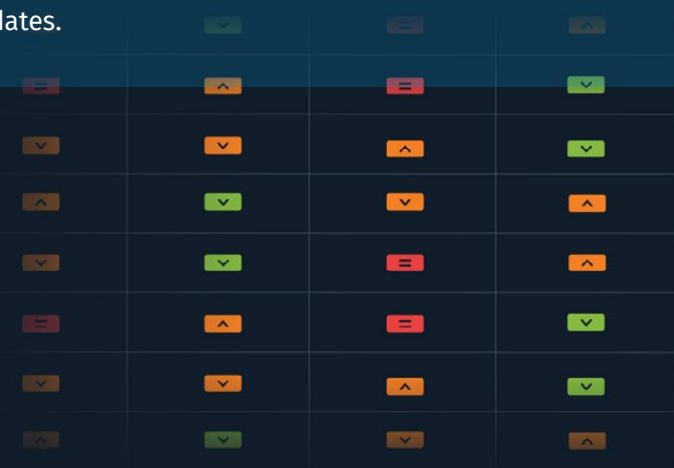
Arctic Sea Ice: Monitors the amount of existing arctic sea ice and its rate of recession compared to those of other climate scenarios.



Climate SIGNS is a subscription-based platform service with regular data updates.
More information is available at: www.climatesigns.app

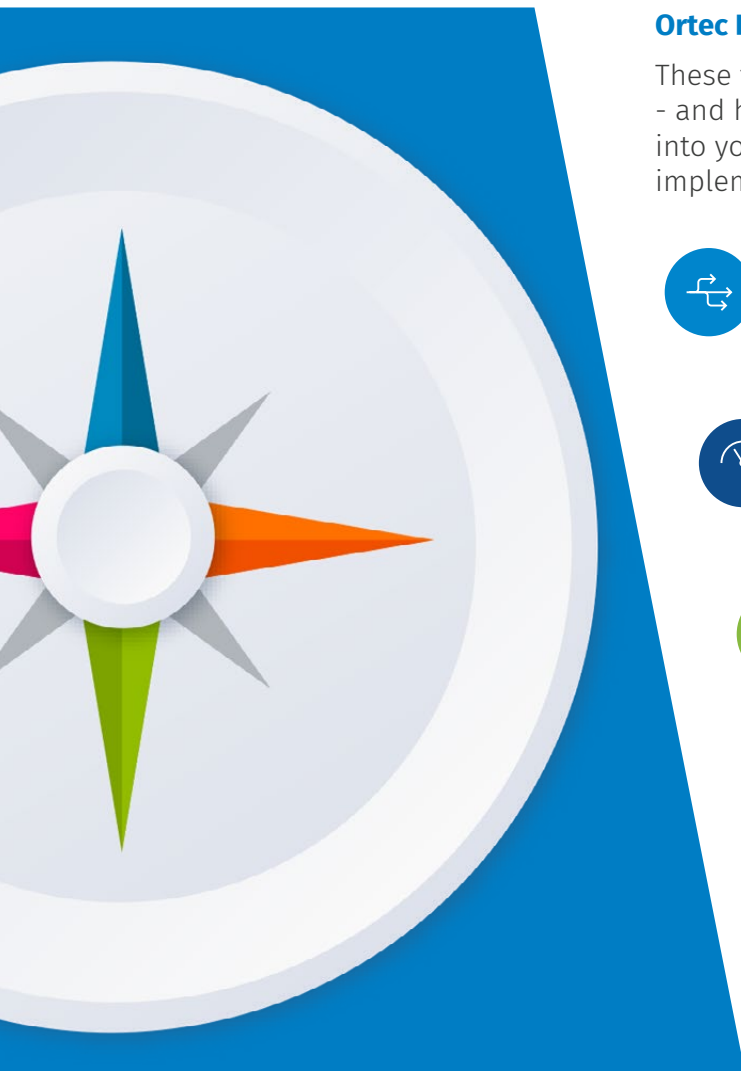
Watch video

Get to know the full potential
of Climate SIGNS in 2 minutes



The Compass

Climate & ESG Solutions



Ortec Finance has developed five tools to support you as an investor to navigate climate change.

These tools offer economic and financial insights into your investments' vulnerabilities and opportunities - and how to act on them. Insights are **quantified** and expressed in **financial metrics** for easy integration into your investment decision-making & reporting frameworks. Our tools can be integrated into **software**, implemented separately, or utilized in various combinations depending on your **specific needs**.



CLIMATE
MAPS

Maps out your portfolio's exposure to systemic, economic and financial climate risks.

In partnership with Cambridge Econometrics



CLIMATE
SIGNS

Signposts the world's actual climate trajectory.



CLIMATE
ALIGN

Monitors portfolio alignment with net-zero GHG emissions by 2050.



CLIMATE
PREDICT

Assesses your real assets' exposure to future extreme weather events.







ESG
RADAR

Alerts you to material ESG breaking news.

Do you have other challenges?

Other solutions provided by Ortec Finance

	Insurance Companies	Pension Funds	Sovereign Wealth Funds	Wealth Management / Banks	Asset Manager
 GLASS for Pensions and Insurance Asset and liability scenario solution that improves financial decision making and risk management by simulating the short and long-term solvency position.	✓	✓	✓		✓
 PEARL The acclaimed performance measurement & attribution solution.	✓	✓	✓		✓
 OPAL Goal-based financial planning and monitoring solution.	✓	✓		✓	✓
 Real world economic scenarios Ortec Finance Scenarioset (OFS) generated by the Dynamic Scenario Generator (DSG). Ortec Finance also offers Risk Neutral scenarios	✓	✓	✓	✓	✓

Contact Us

Speak to one of our experts



Ortec Finance is a leading provider of technology and solutions for risk and return management.

It is our purpose to enable people to manage the complexity of investment decisions. We do this through delivering leading technologies and solutions for investment decision making to financial institutions around the world. Our strength lies in an effective combination of advanced models, innovative technology and in-depth market knowledge. This combination of skills and expertise supports investment professionals in achieving a better risk-return tradeoff and thus better results.

Headquartered in Rotterdam, Ortec Finance has offices in:
Amsterdam, London, Toronto, Pfäffikon and Melbourne.

Willemijn Verdegaal

Co-Head Climate & ESG Solutions



Lisa Eichler

Co-Head Climate & ESG Solutions

climate@ortec-finance.com



20+ countries represented



500+ customers



96% retention rate



3 trillion euro total assets
managed by our clients

Rotterdam

Boompjes 40
3011 XB Rotterdam
The Netherlands
Tel. +31 10 700 50 00

Amsterdam

Naritaweg 51
1043 BP Amsterdam
The Netherlands
Tel. +31 20 700 97 00

London

Bridge House
181 Queen Victoria Street
London EC4V 4EG
United Kingdom
Tel. +44 20 3770 5780

Zurich

Poststrasse 4
8808 Pfäffikon SZ
Switzerland
Tel. +41 55 410 38 38

Toronto

130 Adelaide St. W, Suite 805
Toronto ON, M5H 0A1
Canada
Tel. +1 416 736 4955

Melbourne

WeWork Level 7
222 Exhibition Street
Melbourne VIC 3000
Australia
Tel. +613 8899 6455

www.climatesigns.app

www.ortecfinance.com/climate