



NET ZERO SOLUTION

ARE YOUR INVESTMENTS ON TRACK TO NET ZERO?

Use ISS ESG's Net Zero Solution to assess your alignment.

Make your Net Zero statements meaningful with a data driven approach.

The world is currently facing a climate crisis, and in order to curb global warming to sufficient levels, all corners of society will have to play their part. Investors have an integral role in financing the transition to a green economy, by redirecting flows of capital towards companies that support the objectives of the Paris Agreement.

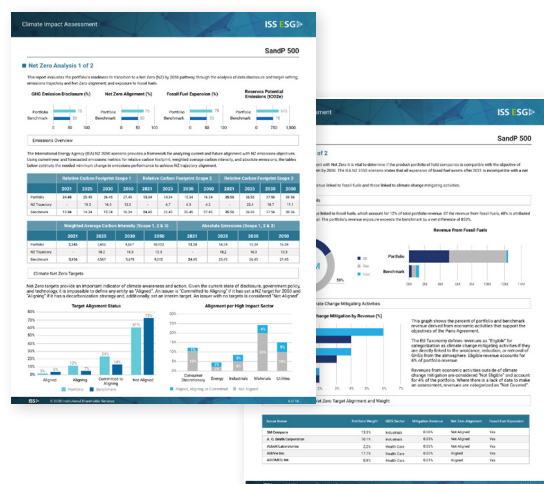
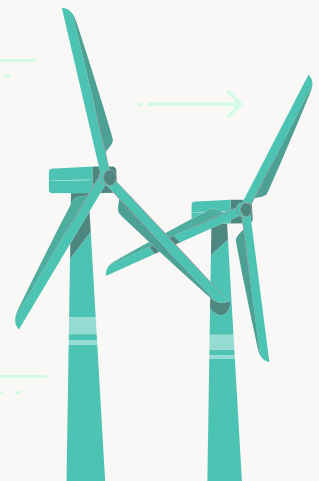
ISS ESG's Net Zero Solutions enables investors to assess whether their investments are aligned with a Net Zero scenario:

NET ZERO PORTFOLIO REPORT

Use the portfolio analytics tool to create an aggregated view of your portfolio's readiness for Net Zero, considering current and potential future emissions performance, fossil fuel exposure, climate mitigating revenue, and target setting.

ISSUER LEVEL NET ZERO ALIGNMENT DATA

Identify positive and negative performing companies against a range of individual climate related metrics.



EXAMPLE

Use our data to report at the portfolio level and quickly provide an overview on vital climate related data points to inform and execute your path to Net Zero.

DISTINCT METHODOLOGY FOR DEFINING NET ZERO ALIGNMENT

ISS ESG's Net Zero alignment assessment is based on companies' substantiated commitments to achieving Net Zero by 2050, as well as whether they have established interim targets, and have a decarbonization strategy.

- ✓ Substantiate your Net Zero pledges
- ✓ Understand your investee companies' Net Zero alignment
- ✓ Efficiently manage climate risks
- ✓ Optimize security selection by investing in companies with climate change mitigating technologies
- ✓ Enhance your engagement and voting activities

**BASED ON COMPREHENSIVE
& EXPANDING SELECTION
OF CLIMATE-FOCUSED
DATAPOINTS***



Carbon &
Climate Data

29,000 issuers



Energy &
Extractives Data

23,000 issuers



EU Taxonomy
Eligibility Data

8,000+ issuers

**Powered by data & insights from a broad range of
high-quality research products within the ISS ESG universe.**

NET ZERO ALIGNMENT DATA

CARBON & CLIMATE DATA

- » GHG emissions
- » Future emissions from reserves
- » Net Zero targets

EU TAXONOMY ALIGNMENT SOLUTION

- » Climate Change Mitigation (eligible revenues)

ENERGY & EXTRACTIVES SCREENING

- » Fossil fuel revenue
- » Fossil fuel expansion

*Please see the details of the product in the appendix.

Automated portfolio reporting and analysis is anticipated to be included within this solution by Q1 2022



ISS-ESG.COM

Americas: +1.646.680.6350
Asia: +65.6830.7838
Australia: +61.2.8048.3999
Europe: +44.20.3192.5799
Europe (France): +33.1.53.09.9970
Europe (Germany): +49.89.462.248.100
Japan: +81.3.5217.7888

SUCCEED WITH ISS ESG SOLUTIONS
Email sales@iss-esg.com to learn more.

ISS ESG is the responsible investment arm of Institutional Shareholder Services Inc., the world's leading provider of environmental, social, and governance solutions for asset owners, asset managers, hedge funds, and asset servicing providers. With more than 30 years of corporate governance expertise and 25 years of providing in-depth responsible investment research and analytics, ISS ESG has the unique understanding of the requirements of institutional investors. With its comprehensive offering of solutions, ISS ESG enables investors to develop and integrate responsible investing policies and practices, engage on responsible investment issues, and monitor portfolio company practices through screening solutions. It also provides climate data, analytics, and advisory services to help financial market participants understand, measure, and act on climate-related risks across all asset classes. In addition, ISS ESG delivers corporate and country ESG research and ratings enabling its clients to identify material social and environmental risks and opportunities.

This document and all of the information contained in it is the property of Institutional Shareholder Services Inc. ("ISS") or its subsidiaries. The Information may not be reproduced or disseminated in whole or in part without prior written permission of ISS. ISS MAKES NO EXPRESS OR IMPLIED WARRANTIES OR REPRESENTATIONS WITH RESPECT TO THE INFORMATION.