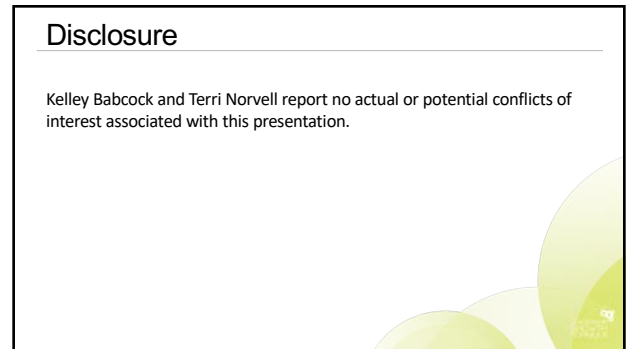


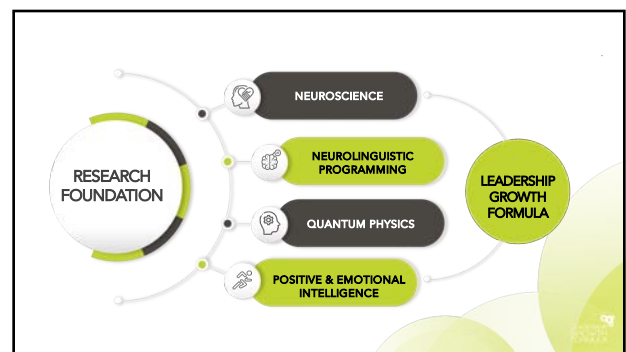
1



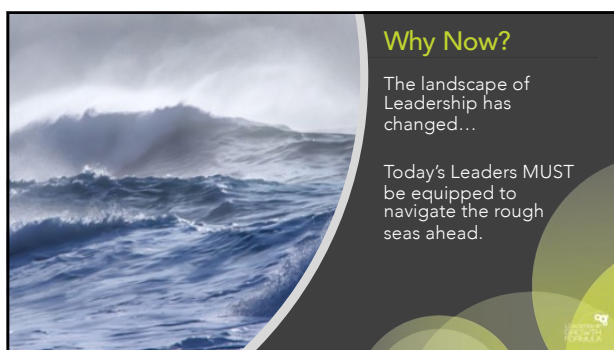
2



3



4




5



6

WHAT KIND OF LEADER DO YOU WANT TO BE?

"A leader is someone who has followers...Period."  
— Marcus Buckingham



7

Three Imperatives for Today's Leaders

- Culture is a long-term business strategy
- Elevate your leadership skills
- Achieve a mental makeover



8


"Who you are is how you lead."  
—Brene Brown



9

CURRENT REALITY: "S RIDE"  
Rollercoaster of Life

S tressed  
truggling  
tuck  
=  
SUFFERING



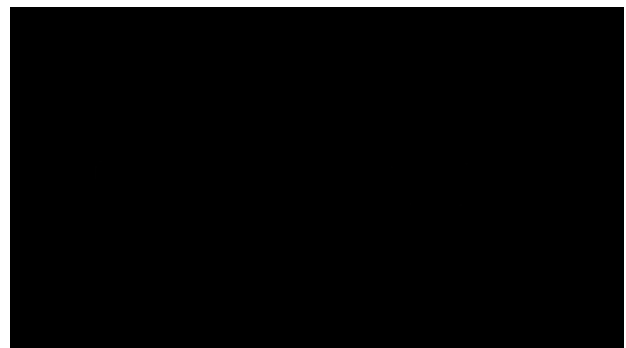
10

YOUR PERSPECTIVE DETERMINES YOUR LIFE...

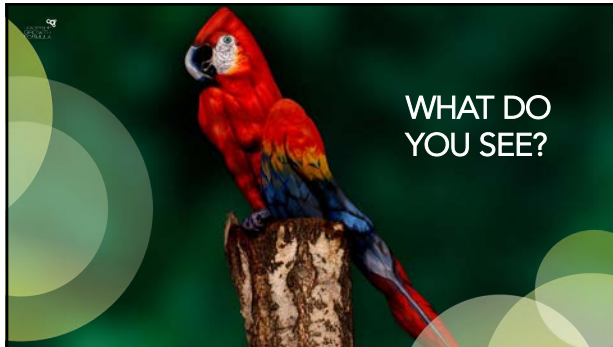
SHIFTING YOUR PERSPECTIVE CHANGES EVERYTHING



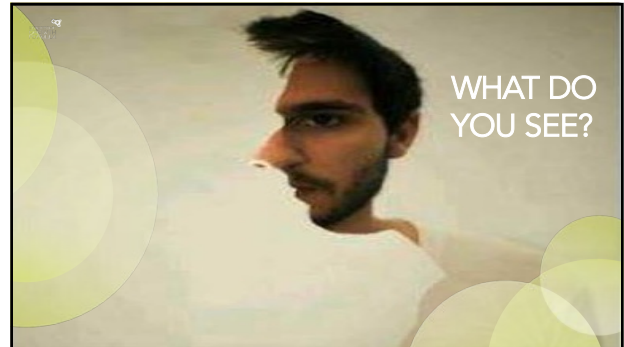
11



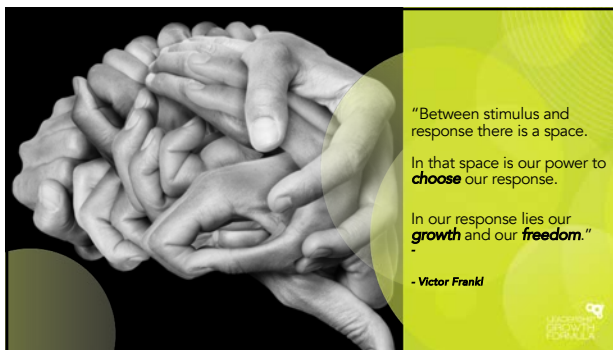
12



13



14



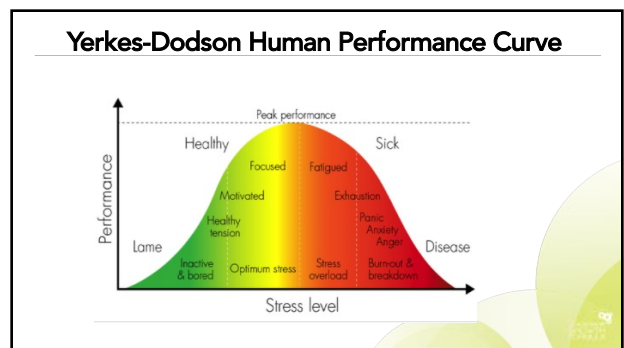
15



16



17



18

## Employee Engagement




...is the emotional commitment the employee has to the organization and its goals.

19

When organizations successfully engage their employees, they experience a:

*Increase profitability*

21% Increase in Productivity  
22% Increase in Profit



20



21

*Culture*  
**EATS**  
**STRATEGY**  
FOR BREAKFAST

- PETER DRUCKER -

22

**Imperative #2:**  
Sharpen your leadership and management skills



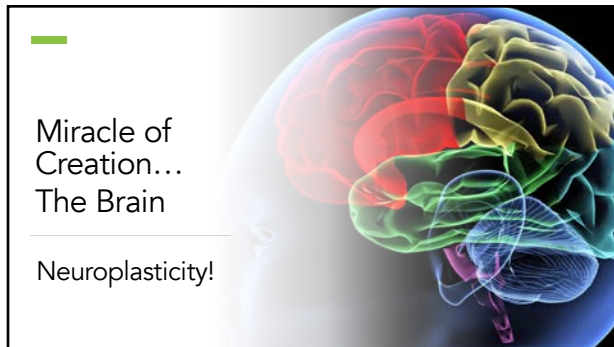
23

Neuroscience is Fundamental to Leadership

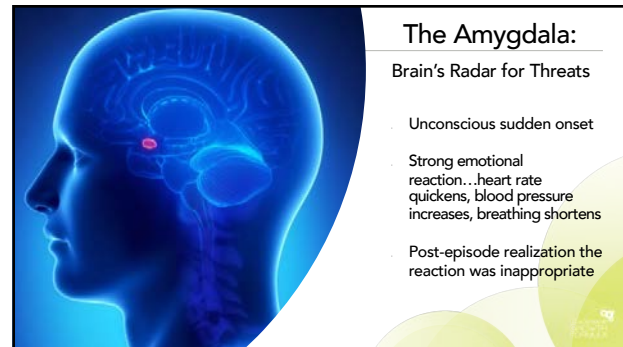


24





25



26



27



28



29



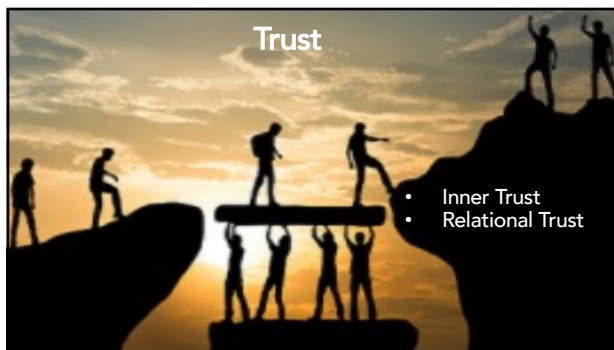
30



31



32



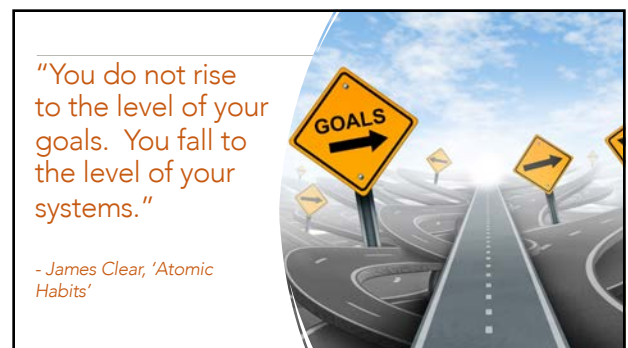
33



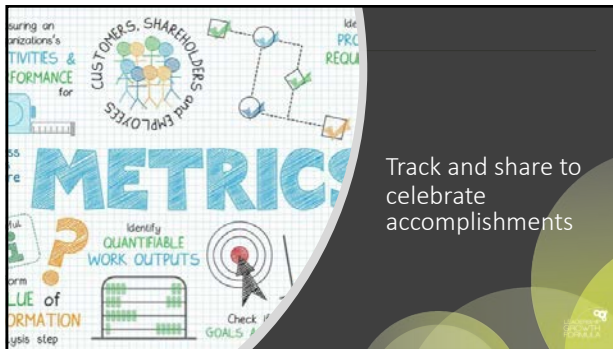
34



35



36



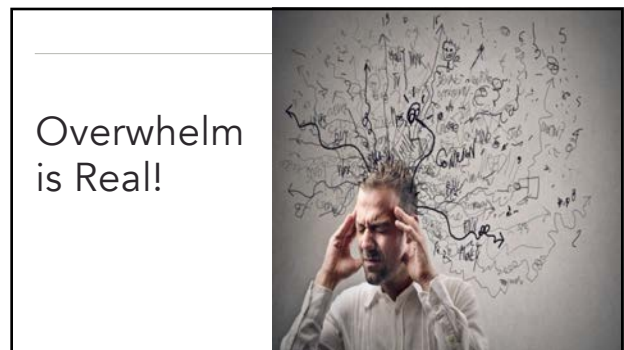
37



38



39



40



41

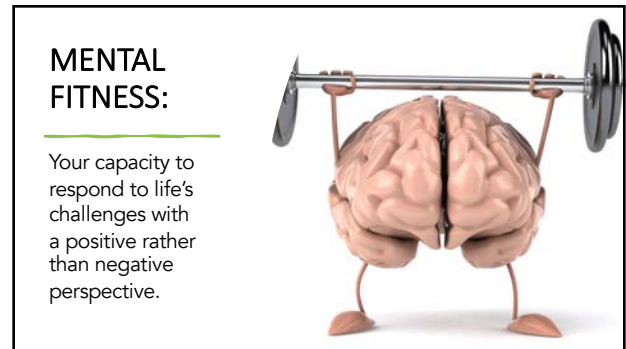


42





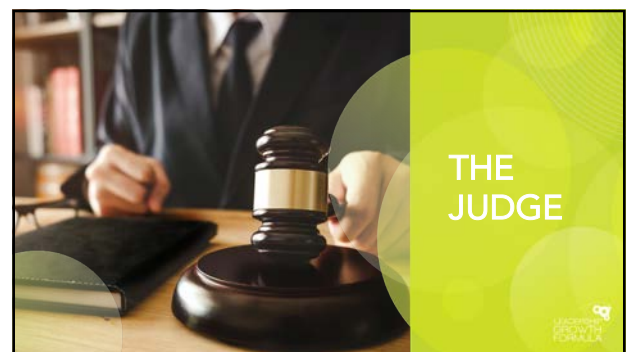
43



44



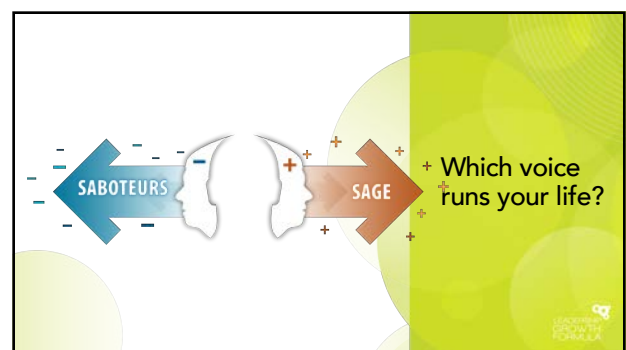
45



46



47



48

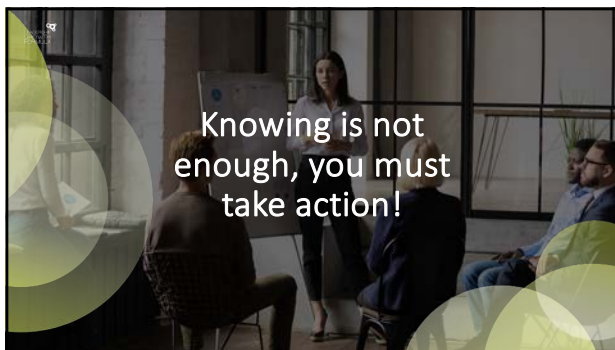




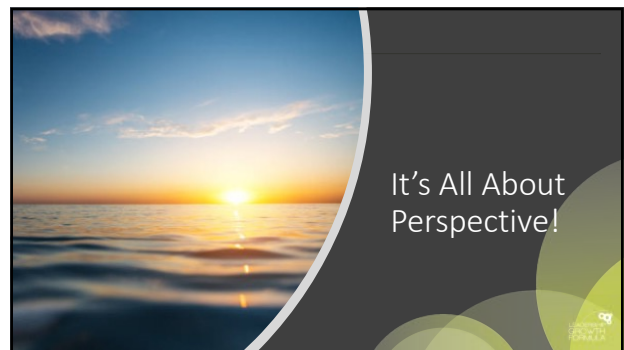
49



50



51



52



53



54