

21st Annual
New Jersey
Emergency Preparedness Conference
2 0 1 9



CHARTER SPONSORS



An Exelon Company



A FirstEnergy Company



ATLANTIC CITY

A TROPICANA ENTERTAINMENT PROPERTY



GRANTOR



SPECIAL SPONSORS



PSEG

SPONSORS



**FIRE & SAFETY
SERVICES**

FIRSTNET
Built with AT&T



NJ 2-1-1 Partnership



RAVE
MOBILE SAFETY

StormGeo
Freedom to Perform

The Response Group
Emergency Response Pre-Planning & Support



V.E. RALPH
EMERGENCY MEDICAL PRODUCTS

Virtua

Wakefern
FOOD CORP.®

WARSHAUER
19  54
Electric Supply

THE NEW JERSEY EMERGENCY PREPAREDNESS ASSOCIATION

BOARD OF DIRECTORS:

Pat MacFarland Goelz
President
NJEPA

Ed Conover
Vice President
NJ Department of Human Service,
Emergency Management

Kim Contos
Secretary
Jersey Central Power & Light,
A First Energy Company

Gary Szatkowski
Treasurer
NJEPA

William Stevenson
Past President
Electrical Utilities (Retired)

Debbie Bell
Trustee
AtlantiCare

Todd Biebel
Trustee
Verizon Wireless

Mike Bradeis
Trustee
Stockton University
Emergency Mangement

Ed Forte
Trustee

John Hamilton
Trustee
Mount Laurel Township EMS

Karen Koptic
Trustee
Atlantic County Emergency Preparedness

Barry Kraus
Trustee
Atlantic County Emergency Preparedness

Paul Malool
Trustee
US Veterans Administration,
Emergency Management

Anthony Mangeri
Trustee
Mangeri Group

Nick Massa
Trustee
Witt/O'Brien's

Matthew Steintal
Trustee
NJEPA

Andrew Sykes
Trustee
Atlantic City Electric

Ed Velez
Trustee
New Jersey Transit

Michael Weber
Trustee
Public Service Electric and Gas

Phyllis Worrell
Trustee
Virtua

TRUSTEES:

Mike Augustyniak
Trustee
NJ Task Force 1

Mike Bailey
Trustee
Cape May County Emergency Management

CONFERENCE SUB-COMMITTEE MEMBERS:

BREAKOUTS

Chair: Karen Pawlak - NJ Department of Health Emergency Management

Co-Chair: Phyllis Worrell - Virtua

Members: Holly Cucuzzella - Burlington County Health Department
Monique Davis - Burlington County Health Department
Vince Jackson - NJ Office of Emergency Management
Nick Massa - Witt/O'Brien's
Gary Szatkowski - NJEPA

EXHIBIT HALL

Chair: Matthew Steintal - NJEPA

Chair: Karen Koptic - Atlantic County Emergency Preparedness

Members: Ray Adams - Galloway Township EMS

Mike Brandenberger - Galloway Township OEM

IT/COMMUNICATIONS

Chair: Ed Velez - New Jersey Transit

Co-Chair: Wayne DeBiasio - Roselle OEM

Members: Brad Ladislaw - North Wildwood FD

Bill Szemcsak - Cape May FD

Mark Tonkery - NJOEM (Retired)

LOGISTICS

Chair: Barry Kraus - Atlantic County Emergency Preparedness

Co-Chair: Jamie Van Pelt - AtlantiCare

Member: Stan Carr - NJEPA

MANAGEMENT

Chair: Ed Conover - NJ Department of Human Services Emergency Management

Co-Chair: Pat MacFarland Goelz - NJEPA

Members: Christine Miller - Executive Director

Tara Factor - Graphics

THE NEW JERSEY EMERGENCY PREPAREDNESS ASSOCIATION

MARKETING/SOCIAL MEDIA

Chair: Todd Biebel - Verizon Wireless
Co-Chair: Michael Bradeis - Stockton University Emergency Management

OPERATIONS/SAFETY

Chair: Bill Stevenson - (Retired) Electric Utility
Co-Chair: Tom Sobin - (Retired) Police Officer

SCHOLARSHIPS

Chair: Ed Forte
Co-Chair: Karen Koptic - Atlantic County Emergency Preparedness

SPECIAL EVENTS

Chair: Phyllis Worrell - Virtua
Co-Chair: Karen Pawlak - NJ Department of Health Emergency Management
Members: Monique Davis - Burlington County Department of Health
Holly Funkhouser Cucuzzella - Burlington County Department of Health
Vincent Jackson - NJ Office of Emergency Management
Nick Massa - Witt O'Brien's
Gary Szatkowski - NJEPA

TRAINING

Chair: John Hamilton - Mount Laurel Township EMS
Co-Chair: Mike Augustyniak - NJ Task Force 1
Members: Debra Bell - AtlantiCare
Daniel Cuning - NJ Office of Emergency Management
Bryan Everingham - NJ Office of Emergency Management
Apryle Fox - Mount Laurel Township EMS
Vincent Jackson - NJ Office of Emergency Management
William Kelleher - NJ Office of Emergency Management

TRAINING (CONTINUED)

Members: Ron Roberts - NJ Office of Emergency Management
Chris Ryan - Capital Health
Michael Urbanski - NJ Office of Homeland Security and Preparedness
Robert Van Fossen - NJ Department of Environmental Protection Emergency Management
Tim Weiss - NJ Division of Fire Safety

TUNO AWARD

Chair: Phyllis Worrell - Virtua
Members: Karen Pawlak - NJ Department of Health Emergency Management
Anthony Mangeri - Mangeri Group, LLC
Debbie Tuno - Wife of Kevin Tunoo

VOLUNTEERS

Chair: Robert Hafner - Sussex County Emergency Management

YOUNG PROFESSIONALS/HIGHER ED

Chair: Michael Bradeis - Stockton University Emergency Management
Co-Chair: Michael Brandenberger - Galloway Township Emergency Management
Members: Jaime Bodrog-Powell - NJ Department of Human Services Emergency Management
Sgt. Dan Cuning - NJ Office of Emergency Management
Steven Pawlak - Port Authority of NY and NJ OEM
Linda Hardy - NJVOAD

SPECIAL THANK YOU

A special thank you to the following organizations for working behind the scenes to make the NJEPA Conference a success!

Wakefern Foods
Atlantic City Electric
Terrance Money, CPA
OceanFirst Foundation
Morgan Stanley
Firewaters Saloon
Hooters Atlantic City
New York Red Bulls

New Jersey Devils
A Dam Good Sports Bar
Giants
Carmines
VCI Emergency Vehicle Specialists
M.A.S.E. Concepts
Garden State Pagers

WELCOME

We are now in our 21st year, we're finally legal!

For those of you that have attended in the past, we welcome you back, hoping you will take full advantage of the numerous training and breakout opportunities, along with the exhibit hall, where you can see state of the art systems and programs that will help you in your professions.

To those of you that may be relative new comers to the Conference, in addition to the trainings, breakouts and exhibit hall, don't miss out on the networking opportunities provided through the Young Professional's Event, the exhibit hall opening reception, Thursday lunch and the Networking and Awards Reception. You will meet extremely intelligent, helpful people that will be there if you need guidance or assistance in the future.

No two years at this Conference are the same and we accomplish this through the year-round efforts of the all-volunteer "staff" working tirelessly. To all our volunteers, Thank You!

An exciting plan we have in place for next year is that we will be hosting the 2020 Conference at Harrah's Waterfront Conference Center May 4-8, 2020. This venue will allow us to bring back the large vehicle display that has been so popular in the past.

To you our attendees, thank you for being with us this year. Please enjoy your time here and help us make the experience worthwhile for you, the communities you serve and for the field of emergency management.

HISTORY

The New Jersey Emergency Preparedness Conference had its humble beginnings as a "grass roots". It started as a conversation at Atlantic County OEM looking for a way to provide higher level training and experiences to local emergency managers. County and State personnel had the opportunity, back then, to attend state, regional and national conferences and the Atlantic County and South Region OEM teams were brain storming ways to bring this kind of information to local EMCs and their teams at no cost. With the tremendous support of the Tropicana Casino Resort and Verizon the Atlantic County Hurricane Seminar was born.

This first effort presented eight speakers on various topics related to coastal preparedness issues for hurricanes. The one day seminar was well received by the approximately 200 people in attendance and they requested expanding the program for the following year.

In 2000 we expanded to a 2 day seminar adding a larger program of speakers which required us to recruit more sponsors to fund the popular program which was presented at no charge to attendees.

Expanding the conference would present a number of challenges including increased participation by our host the Tropicana Hotel Casino and the Atlantic County OEM, NJ State Police OEM, sponsors Verizon, State Farm and those behind the scenes people that made the simple seminar a huge success. Several of the local, county, and state emergency management officials had attended the very popular National Hurricane Conference for many years. A small group of them wanted to try and create a conference similar but unlike our friends at the NHC.

The 2001 NJ Hurricane Preparedness Conference would be different. It would feature 18 one hour breakout sessions, 2 continental breakfast, 2 sponsored lunches, and an exhibit area for 2 days with 32 exhibitors. This was a logistical and financial nightmare tackled by a handful of very dedicated emergency preparedness professionals. Due to unwavering dedication of a select group of people using creative and out of the box solutions the nearly \$60,000 conference came off very successfully with over 600 attendees.

At the after conference meeting the small group decided that we needed to invest the time and effort to continue our successes by forming the New Jersey Emergency Preparedness Association. This required a strong commitment and backing of our sponsors and partners who were behind us all the way and one current event in world history would be the rocket fuel to the creation of the New Jersey Emergency Preparedness Association and the New Jersey Emergency Preparedness Conference. That date September 11, 2001. Edward Conover, Founding President William Melfi, Founding Vice President.

The conference continues today 21 years later, tens of thousands of attendees and thousands of sponsors have made this program the success that it is.

2019 NJEPA CONFERENCE SCHEDULE AT A GLANCE

Times subject to change based on presenter availability. Check website and conference app for updates

Monday, April 29th

- 0700-1400 Registration Desk Open
- 0800-1200 Training Classes
- 0930-1100 Coffee Service (Timing @ trainer's discretion)
- 1200-1300 Lunch on your own
- 1300-1700 Training Classes

Tuesday, April 30th

- 0700-1900 Registration Desk Open
- 0800-1200 Training Classes
- 0930-1100 Coffee Service (Timing @ trainer's discretion)
- 1200-1300 Lunch on your own
- 1300-1700 Training Classes
- 1300-1700 **Young Professionals Event**

Wednesday, May 1st

- 0700-1900 Registration Desk Open
- 0800-1200 Training Classes
- 0930-1145 Breakout Sessions
- 0930-1100 Coffee Service (Timing @ trainer's discretion)
- 1200-1300 Lunch on your own
- 1300-1700 Training Classes
- 1300-1545 Breakout Sessions
- 1630-1930 **Exhibit Hall Opens, Vendor Reception**

Thursday, May 2nd

- 0700-1400 **Exhibit Hall Open, Breakfast and Breaks in the Exhibit Hall**
- 0700-0930 Dedicated Exhibit Time
- 0800-1200 Training Classes
- 0930-1215 Breakout Sessions
- 1130-1330 **Conference Luncheon (Pre-Registration Required)**
- 1300-1700 Training Classes
- 1330-1615 Breakout Sessions
- 1700-2000 **Networking and Awards Reception (Pre-Registration Required)**

Friday, May 3rd

- 0800-1200 Training Classes
- 0900-1145 Breakout Sessions
- 1200 **Conference Adjourns**



**Mark your calendars to join us for the
22nd Annual New Jersey Emergency Preparedness Conference**

May 4-8, 2020

IT'S OFFICIAL

**We're
MOVING!**



Harrah's Waterfront Conference Center

777 Harrah's Boulevard, Atlantic City

We're bringing back the large vehicle display!

Watch for additional details in your e-mail.



Reception Speaker

Colonel Patrick J. Callahan

Colonel Patrick J. Callahan was sworn in on October 31, 2017 as the 14th Colonel of the New Jersey State Police. He has served more than 24 years with the New Jersey State Police. He previously served as the Deputy Superintendent of Operations overseeing nearly 1,800 road troopers assigned to State Police stations throughout the State. Prior to this assignment, Colonel Callahan served as the Deputy Superintendent of Administration. Previous assignments also included him serving as the Commanding Officer of the Emergency Management Section as well as the Recovery Bureau Chief in the wake of Super Storm Sandy.

In this role, he was responsible for working with FEMA, all State Departments, county and local government entities, as well as the Governor's Office of Recovery and Rebuilding to administer and oversee the \$1.5 billion in FEMA Public Assistance and Hazard Mitigation funding awarded to the State. Colonel Callahan has also served as the Chief Financial Officer for the New Jersey State Police and has held various assignments in the Administration Section overseeing budget and fiscal responsibilities associated with the Division. He was also assigned to the Homeland Security Branch and assisted in the planning and distribution of the federal homeland security funding awarded to the State and its 21 counties in the wake of 9/11.

Prior to this assignment, Colonel Callahan served as a station detective and general road duty Trooper. Colonel Callahan earned a Master's Degree in Administrative Science from Fairleigh Dickinson University and earned his Bachelor of Arts Degree from Villanova University. He is a graduate of the 243rd FBI National Academy Session where he was elected Session President. Colonel Callahan also served as the Chairman of the State Police Retirement System Pension Board of Trustees until his recent appointment to Colonel on November 1, 2017. He has been married to his high school sweetheart, Linda, for 29 years and they have four children, Steven, Cassidy, Ryan, and Carrie Ann.

Reception Speakers



Adrienne Fessler Belli, Ph.D., LCSW

Dr. Adrienne Fessler Belli is a psychologist and licensed clinical social worker with over 40 years of experience providing health and trauma related mental health services. She currently serves as the Director of the Disaster and Terrorism Branch of the NJ Department of Health's Division of Mental Health and Addiction Services and is responsible for overseeing and coordinating the disaster behavioral health preparedness, response and recovery efforts statewide.

She has managed several disasters and terrorism events including New Jersey's FEMA-funded mental health response to the 9/11 World Trade Attack, Tropical Storm Irene, and Superstorm Sandy. She holds a Masters of Social Work degree from Rutgers University and Ph.D. in Psychology from Walden University.



Steven M. Crimando, MA

Steven M. Crimando, MA, is an internationally-known subject matter expert and trainer specialized in the behavioral aspects of homeland security, violence prevention, crisis management, and disaster response. He is the Director of Training for the Disaster and Terrorism Branch of the New Jersey Division of Mental Health Services. Mr. Crimando is a Board Certified Expert in Traumatic Stress (BCETS), a Certified Trauma Specialist (CTS), a Diplomate of the National Center for Crisis Management and the American Academy of Experts in Traumatic Stress, and holds Level V Certification in Homeland Security (CHS-V).

Mr. Crimando served as a Disaster Field Operations Supervisor for the FEMA-funded mental health response to the 9/11 World Trade Center attack and coordinated onsite psychological operations at New Jersey's Anthrax Screening Center. He helped coordinate psychological support services at such incidents as the 1993 World Trade Center bombing, and the TWA Flight 800 crash. Mr. Crimando has assisted many victims of violence, including those who were targets of the Unabomber, international kidnappings and other acts of terrorism. He has served as a consultant and trainer for the U.S. Department of Justice; Health & Human Services; the Department of Homeland Security (DHS); the National Criminal Justice Training Center; OSHA, and the United Nations. Mr. Crimando is a certified law enforcement instructor and a mental health specialist with several police trauma teams. Mr. Crimando is a recognized expert in behavioral response to terrorism and has served as a member of the Department of Homeland Security-Lessons Learned Information Shared Working Group on Psychological Management of Radiological Dispersal Device (RDD) Incidents. He has written and lectured extensively to international audiences on human factors and behavioral issues related to acts of mass violence, health emergencies and atypical threats. He is the author of many published articles and book chapters, and has developed crisis management programs for government agencies, international NGO's and multinational corporations.

He has been featured for his work in crisis prevention and response in many newspapers and magazines and frequently appears on both network and cable news and talk shows, as well as in the courts as a subject matter expert addressing public and private sector crisis prevention and response. He can be reached at the offices of the NJ DMHS Disaster and Terrorism Branch at 609-777-0728.

Reception Speakers



Deputy Chief Shawn Backer

Deputy Chief Shawn Backer began his career with the Coral Springs Police Department in 1995. Deputy Chief Backer served as a Patrol Officer until 2002, at which time he was assigned to Criminal Investigations. Deputy Chief Backer served as a Burglary Detective and Crimes Against Persons Detective. In 2005, Deputy Chief Backer was promoted to the rank of Sergeant. As a Sergeant, he was assigned to Patrol and later to General Investigations.

In 2010 he was promoted to the rank of Lieutenant, working in the Patrol Division. In 2012, he was promoted to Captain and was in charge of the Community Services Component. In January 2014, he was promoted to Deputy Chief of Administration, where he has oversight of Community Services, Training, Fiscal, Fleet, Communications, Human Resources and Records. He has also served the department as a Field Training Officer, and as a member of the Special Weapon And Tactics Team.

Deputy Chief Backer graduated from Florida State University with a Bachelor of Science Degree in Criminal Justice. Deputy Chief Backer obtained his Master's degree in Criminal Justice from Florida Atlantic University in 2017. In December 2016, Deputy Chief Backer graduated from the 266th session of the FBI's National Academy. He also graduated from the Broward Sheriff's Office/Nova Southeastern University's Executive Leadership Program. Deputy Chief Backer is a member of the International Association of Chiefs of Police, Florida Police Chiefs Association, and Broward County Chiefs of Police Association.



Captain Ryan Gallagher

Captain Ryan Gallagher graduated from Kean University with a Bachelor of Arts Degree in Criminal Justice and a Master's Degree in Criminology from Florida State University. He began his career with the Coral Springs Police Department in 2002 as a Law Enforcement Officer. He was transferred to the Substation Unit and then was promoted to Investigator in the Crimes Against Persons Unit.

In 2009, he was promoted to Sergeant and supervised the Patrol, General Investigations and Crimes Against Persons units as well as the Office of Professional Standards. He was then promoted to Lieutenant in 2014. As a Patrol Lieutenant, Ryan served as Patrol Night Shift Commander and backup investigator for the Office of Professional Standards.

In August of 2017, he was promoted to the rank of Captain. Captain Gallagher currently supervises the Criminal Investigations Component of the Coral Springs Police Department. As the Captain of Criminal Investigations, he oversees the Crimes Against Persons Unit, Special Victims Unit, General Investigations Unit, Economic Crimes Unit, Victim Advocates and the Dive Team. He also has served as a Field Training Officer, Citizen's Police Academy Instructor and a Response to Resistance Board member.



Tuno Emergency Manager of the Year Award

The Emergency Manager of the Year Award recognizes and honors an individual or program, public or private, which embodies the values and leadership displayed by Emergency Coordinator Kevin H. Tuno during his thirty-three years of service to the Emergency Management Community in New Jersey. The recipient will be an individual or program, who through their long-term commitment to emergency preparedness efforts, have clearly influenced the Emergency Management profession in New Jersey, in a positive and insightful manner.

Previous recipients of the Emergency Manager of the year Award:

2016- Kevin Tuno, Accepted by Debbie Tuno

2017- Phyllis Worrell

2018- Col. Frank Caruso



Captain Jonathan C. Young Memorial Scholarship

Jonathan (Jon) Cardell William Young was born for a lifetime of service. Jon was Roselle's most highly decorated firefighter. In addition to being awarded Fire Fighter of the Year three times, he received Valor Awards from the New Jersey Fireman's Mutual Benevolent Association and the St. Barnabas Hospital Burn Foundation, and the Community Service Award from the Roselle NAACP. A highlight of his career was the delivery of thirteen babies. While off duty, Jon rescued a civilian trapped in a burning car, for which he received a Valor Award from the City of Woodbridge.

Jonathan was also a certified HAZMAT specialist and communications specialist with the New Jersey Urban Search and Rescue Team NJ-TFI. NJ-TFI was the first rescue team at Ground Zero on September 11, 2001, and remained there for ten straight days. Additionally, Jon was the communications officer for the NJ Task Force and president of the NJ Emergency Preparedness Association. He was a certified instructor for confined space rescue, high angle rope rescue, HAZMAT, automobile extrication, CPR, weapons of mass destruction, blood borne pathogens, incident command systems, and emergency vehicle driving.

In his memory, for his lifetime of service to his community and the work he had done for the NJEPA, up to three scholarships are awarded annually to deserving individuals to keep moving emergency management and emergency response into the future.

YOUNG PROFESSIONALS INITIATIVES

Continuing into its 21st year, the New Jersey Emergency Preparedness Conference would like to continue its focus this year on young professionals in Emergency Management. We're hard at work on new programs and events to develop excellence in the field.

Engaging Young Professionals

NJEPA continues to work to improve Emergency Management well beyond the confines of the conference. We have developed specialized programs for "the next generation of emergency managers" (under 40). This session is designed to allow the up and coming emergency manager (professionals in management, planning, health, transportation, GIS, etc. involved in emergency planning) an opportunity to network with his or her peers and develop those essential resources needed for a successful, fulfilling career in emergency management. This session will provide opportunities to meet industry leaders, participate in an exercise and/or participate in facilitated discussions on emerging emergency management topics.

Higher Education Project

NJEPA continues to work with colleges and universities to not only provide meaningful training and discussions the week of the conference, but also to help engage students who are the future of our profession. Whether it is emergency management, homeland security, public health, medical, mental health or social service, the NJEPA Conference provides a venue for opportunities not found in the traditional classroom for professional growth. NJEPA encourages this collaboration through:

- Our scholarship program, to assist our future emergency managers in their academic endeavors
- The opportunity for colleges and universities to take advantage of the conference as an academic classroom with special student rates and sessions
- The opportunities for our partners in Higher Education to spotlight their programs and offerings to all of the emergency professionals attending the conference

ADVANCED PROFESSIONAL SERIES

NJEPA in partnership with the New Jersey State Police Office of Emergency Management is pleased to announce a new initiative that will allow Conference attendees to complete the Advanced Professional Series within three years. The Advanced Professional Development Series offers "how to" training focused on practical information. This series emphasizes applied skills in disaster operations and management, in conjunction with the Professional Development Series emergency management fundamental skills. The APS course lineup was first established to motivate and challenge students to continue emergency management training. Courses include practical skills from the whole spectrum of emergency management and disaster duties. APS courses are classroom based unless otherwise noted. Students who complete the 5 required courses and any 5 of 16 elective courses are eligible to receive the FEMA Advanced Professional Series Certificate of Completion.

By completing the APS, individuals show that they are knowledgeable in the five mission area components of emergency management: prevention, protection, mitigation, response and recovery. The series completion certificate is a standard that is recognized across the country. The APS does not require a recertification once initially completed and there is no cost to participate in the FEMA sponsored certification program. APS courses are delivered through the New Jersey Office of Emergency Management.

TRAINING & BREAKOUT SESSION SCHEDULE

MONDAY, APRIL 29, 2019 • TRAINING SESSIONS

G0393 - Mitigation for Emergency Managers/ 8:00am - 5:00pm / Castanet 4 (2 day)

At the conclusion of this 2-day course, participants should be able to: Analyze reasons for differences between optimal and actual mitigation roles of the emergency program manager, Determine strategies to build support for mitigation planning in the community, Analyze hard risks for a given scenario, Propose mitigation strategy for a particular strategy, Develop a mitigation plan and implementation strategy for a given scenario, Evaluate the effectiveness of a community's mitigation planning efforts, Recommend actions to optimize the mitigation role of the emergency program manager, Target Audience: Local, county and state emergency management personnel responsible for mitigation planning.

Essentials of Community Cybersecurity - AWR-136 / 8:00am - 12:00pm / Castanet 2

The Essentials of Community Cybersecurity (ECCS) course provides information on how cyber attacks can impact, prevent, and/or stop operations and emergency responses in a community. The course also provides a cursory introduction to cybersecurity vulnerabilities, risks, threats, and countermeasures. It explains the vulnerabilities of computer systems and networks and how these vulnerabilities can affect communities, organizations, and daily workplace operations. The course introduces actions communities can take in establishing a cybersecurity program. The course introduces the Community Cybersecurity Maturity Model (CCSMM) as a framework for understanding community cybersecurity and offers a brief introduction to low-cost or no-cost approaches to securing a community against cybersecurity threats and attacks. The course sets the stage for further efforts in which a community can build a cybersecurity program.

Campus Emergencies Prevention, Response & Recovery - MGT-324 / 8:00am - 5:00pm / Castanet 1

The goal of this course is to assist the campus community and the neighboring jurisdiction in developing the necessary decision-making skills to prevent, protect, mitigate the effects of, respond to, and recover from an active shooter situation or other campus emergencies. The course consists of small, problem-based, integrated group activities that require a coordinated, integrated approach to solve. Through a tabletop scenario, course participants will observe a developing active shooter incident and respond in a manner consistent with the currently established campus and jurisdictional emergency operations procedures.

G0557 - Rapid Needs Assessment - Session 1 / 8:00am - 12:00pm / Mambo 1

This course provides information and resources that will enable participants to plan an effective Damage Assessment Program and conduct rapid and effective damage assessments in order to save lives, protect property and the environment, and begin the process of Recovery and Mitigation. Pre-Course Recommendations: IS-0100.b, Introduction to the Incident Command System, ICS-100; IS-0200.b, Incident Command System for Single Resources and Initial Action Incidents; IS-0700.a, National Incident Management System, An Introduction; IS-0800.b, National Response Framework, An Introduction IS-0120.a, An Introduction to Exercises; and IS-0130, Exercise Evaluation and Improvement Planning

Shelter Fundamentals / 8:00am - 12:00pm / Mambo 2

The American Red Cross Shelter Fundamentals training course introduces the guidelines and procedures for setting up, running and closing a shelter during a disaster. Referencing shelter checklists, participants will work on a case study that takes them through four of the six phases of the Sheltering Process: Resourcing, Opening, Operating and Closing. The purpose of this course is to prepare participants to assist in the resourcing, opening, operating and closing of a Red Cross shelter.

G0775 - EOC Management & Operations / 8:00am - 5:00pm / Castanet 3

This course describes the role, design, and functions of Emergency Operations Centers and their relationships as components of a multi-agency coordination system. The course contains disaster-related examples, activities and case studies that relate to EOC's and multi-agency coordination systems at the local, state and federal levels of government. At the end of the course, students should be able to: Relate EOC operations to National Incident Management System (NIMS) requirements, Describe the role that EOCs play in overall multiagency coordination, Describe the relationship between the EOC and the on-scene Incident Command System (ICS) structure, Identify staffing, information, systems, and equipment needs at the EOC, Determine whether participants' EOC organizations are conducive to effective coordination, Identify potential alternate locations suitable for EOC operations should the primary EOC facility become damaged or inoperable, Create a test, training and exercise plan for critical EOC operations, Develop a strategy and schedule for reviewing EOC resource requirements and technology needs.

Ready Seniors / 8:00am - 5:00pm / Tambora

This workshop is intended for any organization to learn more about the challenges of sheltering the general public in place for an extended period of time. This workshop utilizes an improvised nuclear device scenario to place discussion in context, but attendees will draw out many lessons learned for more frequent or likely scenarios. The agenda will include: Medical effects of ionizing radiation, Principles of sheltering in place, Alternative methods of communication, Tabletop exercise. Target Audience: Any emergency planner, particularly from private industry, educational facilities, houses of worship, healthcare facilities, or other whole community partners.

Tactical Emergency Casualty Care - TECC / 8:00am - 5:00pm / Pageant (2 day)

NAEMT's Tactical Emergency Casualty Care (TECC) teaches EMS practitioners and other prehospital providers how to respond to and care for patients in a civilian tactical environment. It is designed to decrease preventable deaths in a tactical situation. The course presents the three phases of tactical care: Direct Threat Care that is rendered while under attack or in adverse conditions, Indirect Threat Care that is rendered while the threat has been suppressed, but may resurface at any point, Evacuation Care that is rendered while the casualty is being evacuated from the incident site. The 16-hour classroom course covers the following topics: Hemorrhage control; Surgical airway control and needle decompression; Strategies for treating wounded responders in threatening environments; Caring for pediatric patients; and Techniques for dragging and carrying victims to safety.

All-Hazards Disaster Response - AHDR / 8:00am - 5:00pm / Carousel

The All Hazards Disaster Response (AHDR) course teaches students how to respond to the many types of disaster scenarios they may encounter, including natural disasters and infrastructure failings, fires and radiological events, pandemics, active shooter incidents, and other mass casualty events. AHDR educates participants on how to analyze potential threats in their area, assess available resources, and create a response plan that will save lives. Features of a medical response plan covered in the course include: Communicating effectively during disasters; Mutual aid and interoperability; Managing resources such as supplies, medications and equipment; Triage and transportation strategies and challenges; Patient tracking and evacuation. At the start of the course, participants conduct a "hazards vulnerability analysis" to assess features of their environment, both natural and man-made, that pose risk along with assessing the needs of vulnerable populations, such as assisted-living residents or hospital patients that need special consideration during such an event.

Social Media Engagement Strategies - PER-343 / 8:00am - 5:00pm / Bongo

This course will prepare participants to engage individuals and volunteer organizations through social media, especially in the context of disaster preparedness and response. Social media engagement is often an enigma to most people, particularly in the public sector, because it is a different form of communication than most are accustomed to. Through this course, participants will learn how to develop content that engages their audiences and turns their words into action throughout the disaster cycle. Participants will learn about social media engagement techniques, individual and organizational roles in crisis communication and Virtual Operations Support Teams (VOST).

First Responder Suicide / 8:00am - 12:00pm / Bossa Nova

This workshop will address the emotional toll first responders face responding to suicide calls and resources for suicide prevention and postvention that exist for responders. Attention will also be paid to the prevalence of substance use disorders and mental health issues that often culminate in a suicidal crisis both in responders and the general community. Learning Objectives: Participants will learn the high prevalence rates of suicide among first responders. Participants will learn both Suicide Risk Factors and Warning signs and be able to differentiate each. Participants will discuss the factors leading to deaths referred to as "Suicide by Cop." Participants will learn how to utilize Acute Traumatic Stress Management techniques.

EPCRA Training by NJ SERC / 8:00am - 12:00pm / Mambo 3

Essential training provided free for Emergency Management Coordinators of New Jersey. The New Jersey State Emergency Response Commission (SERC) will be offering free training for Emergency Management Coordinators on Emergency Response Plan development as well as the administrative and logistical requirements to remain compliant with the Emergency Planning and Community Right to Know Act (EPCRA.) This training is essential to inform your community and protect public health and the environment.

Emergency Management Basic Workshop - Session 1 / 1:00pm - 5:00pm / Mambo 1

The goal of this course is to provide instruction and guidance to individuals who are new to emergency management, or those who lack a conceptual understanding of how to develop and conduct a comprehensive program for managing/coordinating the planning, response and recovery involved in emergencies. The training will include information on legal authority, roles and responsibility of elected and appointed officials, emergency planning, training and exercising, and procedures for obtaining assistance from superseding authorities. This course also meets the requirements spelled out in Appendix A:9-40.1 for newly appointed Emergency Management Coordinators.

Promoting Resilience: Tactics for Reducing Long Term Stress Reactions for First Responders/ 1:00pm - 5:00pm / Bossa Nova

First Responders play an active role in their own resilience and survival. There are also some basic responder and family pre-deployment factors that may reduce the amount of residual stress. This four hour workshop addresses the importance of preparing First Responder Communities to address traumatic stress and make identifying and responding to their own stress a standard operating procedure. Participants will leave with skills for pre-deployment activities to reduce stress as well as a vernacular for bringing the behavioral health conversation and reducing existing stigma. They will learn warning signs for suicide and substance abuse and will leave with tools from knowing appropriate referrals to the most helpful mobile apps to support the treatment of long term stress reactions.

CERT--Responding to the Disabilities and Access and Functional Needs Community / 1:00pm - 5:00pm / Mambo 4

During this unique training, attendees will learn about how New Jersey has embraced the whole community philosophy by engaging people with disabilities and access and functional needs (DAFN) in its CERT program. By starting at the municipal level, these CERTs help improve and enhance emergency preparedness and response efforts—from helping individuals with DAFN create personal preparedness plans to ensuring accessibility is restored following disasters. Strategies on how to best involve and serve individuals with DAFN in relation to the CERT program will be discussed.

Clandestine Laboratory and Hazardous Narcotic Awareness / 1:00pm - 5:00pm / Mambo 3

The increase in popularity of fentanyl, fentanyl analogs, and other potent synthetic opioids represent a significant risk to narcotic officers. These synthetic opioids are classified as highly toxic substances due to their extreme potency and ability to easily be inhaled or absorbed through the skin. Fentanyl's estimated lethal dose is approximately 2 mg and several analogs recently synthesized are more potent than fentanyl. These toxic substances present a serious risk to first responders who may encounter them during the course of their duties. Additionally, the increase in the usage of fentanyl in the narcotic mixture has also resulted in a rise in high hazards environment/ clandestine responses in the State of New Jersey.

Roundtable Discussion on Statewide Sheltering / 1:00pm - 5:00pm / Mambo 2

Emergency Managers and Mass Care leads are being asked to participate in this interactive round table discussion centering on shelter operations. Through the use of a simulated exercise, participants will be asked to engage in a discussion regarding Sheltering efforts that occur at the Statewide, County and Local level. Participants will be asked to refer to their sheltering plans based on the scenario provided. Resources provided will be the Hurricane Decision Support Tool as well as the statewide mass care sheltering strategy.

Community Cybersecurity Exercise Planning - MGT-385 / 1:00pm - 5:00pm / Castanet 2 (2 day)

This course is designed to introduce cyber to exercise planners to help them recognize the nature and reach of cyber, so they can better help their communities prevent, detect, respond to, and recover from cyber incidents. Participants will recognize how cyber can be incorporated into exercises in a meaningful way. Participants will be introduced to cyber topics and how cyber can impact the business operations of an organization and community. Lecture and activities will explore objectives, players, cyber injects and challenges to incorporating cyber into exercises. Participants will be exposed to many possible injects and scenarios that can be used in an exercise. Participants will begin development of a community cybersecurity tabletop exercise. The Community Cybersecurity Maturity Model will be used to examine the contribution of exercises to a community's overall cybersecurity posture. This course teaches planning personnel how to include cyber components in their regular planning process. Participants will be given the opportunity to plan cyber components for future community cybersecurity exercises. Prerequisites: AWR-136 Essentials of Community Cybersecurity should be completed before attending this course. Participants should have an understanding of the Homeland Security Exercise and Evaluation Program (HSEEP) and have familiarity with community and organizational exercises. The concepts and ideas delivered in IS-120 is "An Introduction to Exercises" from the Federal Emergency Management Agency may prove to be beneficial in preparation for this course.

TUESDAY, APRIL 30, 2019 • TRAINING SESSIONS

Shelter Field Guide / 8:00am - 5:00pm / Bongo

Operating emergency shelters helps communities respond to disasters. The Shelter Field Guide helps organizations without prior disaster experience establish and maintain shelters and provides a basic overview of shelter operations and is written for people who may manage a shelter. The guide is designed to be used in the field throughout the cycle of shelter opening, operation, and closing. The Shelter Field Guide Training is an 8-hour course designed to train faith-based groups, nonprofit organizations, government partners, and private industry in the use of the Shelter Field Guide.

Site Protection through Observational Techniques - AWR-219 / 8:00am - 5:00pm / Castanet 1

Emergency responders, security professionals, security support staff, and the public must work together to identify suspicious objects, substances, and people. This course trains public safety personnel to improve their observational techniques by using a four-step ongoing screening process that includes increasing protective awareness, identifying preoperational behaviors, evaluating, and taking action. Participants will use fictional scenarios to examine each step of the process. At the end of this course, participants will be able to better recognize, communicate, and act upon suspicious behaviors that could indicate a terrorist attack.

Flooding Hazards: Science & Preparedness - AWR-362 / 8:00am - 5:00pm / Castanet 3

Flooding hazards can threaten any community in any location in the United States. Flooding can occur over a period of weeks or days, or minutes, thus this course focuses on the identification and assessment of hazards due to flooding to enable proper preparedness and response. As flooding is one of the top meteorological killers in the United States and poses particular hazards to emergency responders, this introduction to recognizing flooding threats is essential for developing safe communities. Flooding Hazards: Science and Preparedness is an awareness-level, eight-hour course that addresses the current science of the causes of floods (both meteorological and otherwise), flood forecasting, flood risk assessment, and best practices for preparation and mitigation for both short- and long-fuse flooding events. Modules will include instruction on: Factors that contribute to flooding and how these determine flood risk; FEMA flood risk maps and the National Flood Insurance Program; How to read and interpret forecasts, watches, and warnings from the National Weather Service and hydrographs from the U.S. Geological Survey; and Proper preparation for sudden flooding, such as flash flooding and dam breaks, and long-fuse flood events such as river flooding.

Mental Health First Aid / 8:00am - 5:00pm / Bossa Nova

Just as CPR helps you assist an individual having a heart attack, Mental Health First Aid helps you assist someone experiencing a mental health or substance use-related crisis. In the Mental Health First Aid course, you learn risk factors and warning signs for mental health and addiction concerns, strategies for how to help someone in both crisis and non-crisis situations, and where to turn for help. Mental Health First Aid teaches about recovery and resiliency – the belief that individuals experiencing these challenges can and do get better, and use their strengths to stay well.

ICS Forms and IAP/EAP Development / 8:00am - 5:00pm / Salon 1, North Tower

2-day program on Incident/Event Action Plans utilizing ICS Forms, the Planning process, Fundamental review of the Command and General Staff Roles and Responsibilities in producing the Plan and Navigating the Planning Cycle.

G0364 - Multi-Hazard Emergency Planning for Schools / 8:00am - 5:00pm / Mambo 3 (2 day)

This course provides schools with the knowledge, skills, and tools needed to refine or develop an all-hazards school Emergency Operations Plan (EOP) and to identify how to train and exercise the school EOP. The course follows the guidance set forth in the FEMA Comprehensive Preparedness Guide, CPG 101, for developing an EOP and explains how to utilize the National Incident Management System as the foundation for planning and building partnerships with outside agencies such as law enforcement, fire, and emergency management.

Emergency Management Basic Workshop - Session 2 / 8:00am - 12:00pm / Mambo 1

The goal of this course is to provide instruction and guidance to individuals who are new to emergency management, or those who lack a conceptual understanding of how to develop and conduct a comprehensive program for managing/coordinating the planning, response and recovery involved in emergencies. The training will include information on legal authority, roles and responsibility of elected and appointed officials, emergency planning, training and exercising, and procedures for obtaining assistance from superseding authorities. This course also meets the requirements spelled out in Appendix A:9-40.1 for newly appointed Emergency Management Coordinators.

Psychological Trauma in EMS Patients - PTEP / 8:00am - 5:00pm / Carousel

NAEMT's Psychological Trauma in EMS Patients (PTEP) course gives EMS practitioners the resources they need to help alleviate patients' hidden wounds - intense fear, stress and pain - during a medical emergency. PTEP educates EMS practitioners about the biological underpinnings of psychological trauma, the short and long-term impact on the brain and body, and warning signs that a patient is experiencing extreme psychological distress. EMS practitioners are also taught strategies and techniques to alleviate patients' distress and help patients cope with what they're experiencing to ward off lingering effects. The 8-hour classroom course features scenario-based interactive sessions and lectures. The course is accredited by CAPCE and recognized by NREMT. Students who successfully complete the course receive a certificate of completion, a wallet card good for 4 years, and 8 hours of CAPCE credit.

EMS Defense Strategies & Situational Awareness / 8:00am - 12:00pm / Mambo 2

This course will cover: Use of Force Continuum, Personal Safety, Proper Positioning, What do your defenses do to the subject, Separation from attacks directed at you, Separation from attacks directed toward your partner or another bystander, How to prevent/restrain a patient from fighting and spitting, Defending against a Weapon / Weapon Disarms. Conclusion and Q&A. Presented by: Mathew T. Giachetti, Jesse Porcelli

2019 Threat and Hazard Identification and Risk Assessment (THIRA) and Stakeholder Preparedness / 8:00am - 12:00pm / Mambo 4

The 2019 Threat and Hazard Identification and Risk Assessment (THIRA) and Stakeholder Preparedness Review (SPR) reports are due December 31, 2019. The annual THIRA and SPR reports are mandatory for a state to receive federal homeland security funding, and are used to develop and verify investment justifications. NJOHSP and FEMA Region II want to ensure that whole community stakeholders have the opportunity to participate in New Jersey's THIRA and SPR process for 2019. This training will explain THIRA and SPR using Comprehensive Preparedness Guide (CPG) 201 - Third Edition as its basis. The training will introduce the Whole Community Input Form, Core Capability Development Sheets, and other tools to develop a THIRA and SPR.

NJ Bleeding Control for First Responders / 8:00am - 12:00pm / Tambora

This course was developed by University Hospitals Center for Emergency Preparedness and Response. (CEPR). Understand the THREAT acronym, identify the differences between level 1 and level 2 trauma centers, learn the drive or fly criteria, and the importance of establishing a casualty collection point. Provide instruction on how to identify life threatening bleeding. How to provide and practice basic bleeding control techniques with and without training equipment. To provide students with information on equipment used for bleeding control. Describe what definitive care is. To explain the use of equipment in the NJ DOH Bleeding Control Kit and the UASI Bleeding Control Kit. Topics This instructor led entry level program prepares NJ first responders for the following: How to identify life threatening bleeding Provide and practice basic bleeding control techniques Practice with different equipment used for bleeding control Provide information on the selection of bleeding control equipment What is definitive care To teach the use of equipment in the NJ DOH Bleeding Control Kit and The UASI Bleeding Control Kit Audience All New Jersey first responders

EM1 Graduates Update and Networking Session / 10:00am - 12:00pm / Salon 2, North Tower

This session is for EM1 Graduates ONLY. We will provide emergency management updates that have happened since class ended and you will have the opportunity to network with other past classes.

NJ Traffic Incident Management Safety Guidelines / 1:00pm - 5:00pm / Mambo 4

Traffic Incident Management (TIM) Responder Training brings police, firefighters, DOT, towing, medical personnel, and other incident responders together to engage in interactive, hands-on incident resolution exercises. Learning to coordinate response activities and optimize operations is vital to responding effectively in the field and to building a unified national practice on incident management.

EMS PPE, Transportation, and Decontamination for Patients with High Consequence Pathogens / 1:00pm - 5:00pm / Tambora

This material is targeted for EMT, Paramedic, Fire, Law enforcement, OEM and ancillary personnel. The New Jersey Department of Health and University Hospital Center for Emergency Preparedness and Response developed this program for training First Responders on a single method of putting on and taking off PPE, Transporting, and decontaminating the equipment and ambulance after encountering a High Consequence Pathogens Person. The information that follows describe how this program can be used to enhance adult learning. Trainers may use all or part of this material and enhance as needs to optimize the learning environment and meet the audience needs. Training Goal: To have all trainers teaching the a single method of Donning and taking off PPE. Training Objectives: Practice how to properly Don and take off PPE, Track the process using a checklist and assess when finished, Review all checklist and flowcharts. Learner Objectives: At the end of this presentation, the first responder should be able to: Correctly demonstrate how to don and remove PPE

G0557 - Rapid Needs Assessment - Session 2 / 1:00pm - 5:00pm / Mambo 2

This course provides information and resources that will enable participants to plan an effective Damage Assessment Program and conduct rapid and effective damage assessments in order to save lives, protect property and the environment, and begin the process of Recovery and Mitigation.

Young Professionals Event / 1:00pm - 5:00pm / Salon 2, North Tower

NJEPA continues to work to improve Emergency Management well beyond the confines of the conference. We have developed specialized programs for "the next generation of emergency managers" (under 40). This session is designed to allow the up and coming emergency manager (professionals in management, planning, health, transportation, GIS, etc. involved in emergency planning) an opportunity to network with his or her peers and develop those essential resources needed for a successful, fulfilling career in emergency management. This session will provide opportunities to meet industry leaders, participate in an exercise and/or participate in facilitated discussions on emerging emergency management topics.

Emergency Management Basic Workshop - Session 3 / 1:00pm - 5:00pm / Mambo 1

The goal of this course is to provide instruction and guidance to individuals who are new to emergency management, or those who lack a conceptual understanding of how to develop and conduct a comprehensive program for managing/coordinating the planning, response and recovery involved in emergencies. The training will include information on legal authority, roles and responsibility of elected and appointed officials, emergency planning, training and exercising, and procedures for obtaining assistance from superseding authorities. This course also meets the requirements spelled out in Appendix A:9-40.1 for newly appointed Emergency Management Coordinators.

WEDNESDAY, MAY 1, 2019 • TRAINING AND BREAKOUT SESSIONS

Tactical Emergency Casualty Care for Law Enforcement / 8:00am- 5:00pm / Pageant

G0272 - Warning Coordination / 8:00am - 5:00pm / Tambora

This program addresses Warning Coordination for weather- or flooding-related events. It provides training to help facilitate the process whereby State, local, tribal, and territorial officials responsible for warning coordination and communication work closely with the National Weather Service (NWS) and the news media to provide effective warnings that can be received and understood by people at risk. The effective coordination of these warnings is paramount to saving lives and protecting property.

Community Resilience - AWR-228 / 8:00am - 5:00pm / Castanet 3

The course will focus on resilience as a unifying framework for community-based planning, preparedness, response, and recovery. The course will emphasize target capabilities to enhance preparedness and response to natural hazards including chronic hazards and hazard events through the integration of risk-based, community-based, and collaborative strategies into existing plans and programs.

Physical And Cybersecurity for Critical Infrastructure MGT-452 / 8:00am - 5:00pm / Castanet 4

The national and economic security of the United States depends on the reliable functioning of critical infrastructure. This course encourages collaborative efforts among individuals and organizations responsible for both physical and cybersecurity toward the development of integrated risk management strategies that lead to enhanced capabilities necessary for the protection of our Nation's critical infrastructure. Participants will identify physical and cybersecurity concerns impacting overall infrastructure security posture, examine integrated physical and cybersecurity incidents and the evolving risks and impacts they pose to critical infrastructure and explore resources that can be applied to improve security within an organization, business, or government entity.

FEMA - Individual Assistance Preliminary Damage Assessments (IA PDA) Training/Exercise / 8:00am - 12:00pm / Salon 2, North Tower

This interactive workshop provides an overview of the process for completing an Individual Assistance (IA) Preliminary Damage Assessment (PDA) for state and local emergency managers who will be conducting IA PDAs. The workshop will discuss the logistics of conducting IA PDAs, explain the roles and responsibilities of IA PDA team members, and define the steps in the IA PDA Process. Attendees will also learn to recognize basic construction components and different types of damage through activities and exercises.

First Responder Peer Resiliency: NATAL Model / 8:00am - 12:00pm / Bongo

The Jersey City/Newark UASI Region (UASI) has contracted with NATAL, Israel's Trauma and Resiliency Center, to put together a training for Hospital and Emergency Medical Services (EMS) first responders to provide them with tools for self-resiliency in emergency situations. The UASI Region recognizes that these first responders face continuous professional stress and encounter extremely traumatic situations daily, therefore it is important that they are provided with the skills to mentally process these events as they happen so that they do not lead to longer more pronounced post-traumatic disorders. This workshop will introduce exercises that demonstrate: Psycho-educational screening tools to identify individuals at risk of developing stress related problems (i.e. stress, trauma, post trauma), Emergency interventions and stress management techniques, Techniques to help inform loved ones on critical conditions, loss and bereavement, Techniques connect to sources of inner strength and inspiration (coping mechanisms), as well as avoid personal and professional burnout, while providing participants with coping and decision-making tools under stressful situations, Guidance to strengthen the relationship amongst colleagues to create a support network.

Understanding Homegrown Violent Extremists (HVE) Mobilization Indicators / 8:00am - 12:00pm / Salon 3, North Tower

State and federal intelligence agencies continue to rank the threat posed by Homegrown Violence Extremists (HVEs) as the most significant risk to New Jersey and the homeland. As the time line from radicalization to mobilization continues to tighten, the need for coordination and cooperation in the area of violence prevention has never been more important. The National Counter Terrorism Center (NCTC) has developed a guide and related training program for public safety personnel as roadmap for observable behaviors that could inform whether individuals or groups are preparing to engage in violent extremist activities including potential travel overseas to join a Foreign Terrorist Organization (FTO). This 4 hour program for first responders introduces the NCTC Mobilization Indicators model, as well as reviews the roles the New Jersey Office of Homeland Security & Preparedness Suspicious Activity Reporting System (SARS), and the FBI Joint Terrorism Task Force (JTTF), as well as County and Municipal Counter Terrorism Coordinators. Copies of the NCTC "Homegrown Violence Extremists Mobilization Indicators for Public Safety Professionals" guide are provided and used in class during discussion and exercises.

NJ Emergency Fire Service Deployment Act / 8:00am - 12:00pm / Bossa Nova

The Office of Fire Department Preparedness (OFDP) coordinates and plans for the deployment of fire service resources throughout New Jersey and when requested by other states or federal agencies. The OFDP will facilitate a safe and efficient response to any emergency incident or event that requires the deployment of New Jersey's fire service resources in order to protect life and property from the danger or destruction by fire, explosion or other disasters. The OFDP will: Assist the State Fire Coordinator in the deployment of resources in major incidents or events, Provide assistance and support to the County Fire Coordinators prior to and during major incidents or events, Provide training and education to County Fire Coordinators, Collect and disseminate fire service resource information, Work on projects that will enhance the response capabilities of the fire service of New Jersey, Develop working relationships with federal, state, county and local agencies, Assist local fire departments and County Fire Coordinators in developing and refining mutual aid plans, Respond to major emergencies throughout the State and region, Staff State, County and Local EOC's when requested, Research, develop and implement statewide interoperability solutions, Organize regional fire service response Task Forces and Strike Teams.

Homemade Explosives: Awareness, Recognition & Response - AWR-313 - NMT / 8:00am - 5:00pm / Mambo 4

The HME course provides first responders with information on general explosive characteristics and hazards, homemade explosive precursor materials, homemade explosive manufacturing indicators, and Improvised Explosive Device (IED) components. Additionally, the course teaches first responders how to identify a homemade explosive laboratory and how to establish scene safety and security in such an incident. First responders are also presented information regarding community awareness and education programs related to homemade explosives. This information better prepares first responders to recognize hazards associated with homemade explosives during response operations.

BREAKOUT SESSION: Responding to a Mass Fatality Incident / 9:00am- 10:15am / Castanet 1

Steven Cicala, Regional Medical Examiner: Topics: Describe trends in response to different kinds of mass fatality incidents; The difference in handling remains involved in a terror incident rather than a human made incident; NJ Medical Examiner's response capability to a MF incident.

BREAKOUT SESSION: Verizon/Mutualink-Partners When Every Second Counts: Lessons from Operation Convergent Response/ 9:00am - 10:15am / Mambo 2

When every second counts: Operation Convergent Response showcases life-saving tech innovations. Verizon hosted the second annual immersive crisis response experience for first responders in November of 2018. In any crisis, every second counts. Mutualink participated in the Interstate Pileup scenario, held at the Guardian Centers in Perry, GA in November 2018. Mutualink's interoperability platform was put in the hands of first responders to show how multimedia collaboration can save lives in complex crisis response operations. "When every second counts, it's critical that first responders know the emerging technologies that are available and understand how they can be used in the event of an emergency," said Jeff Schweitzer, Verizon's asymmetrical solutions architect. "By convening leaders in technology, public safety and emergency response, we are able to uniquely support first responders through in-depth, immersive training and hands-on experiences." The premise for the realistic scenario: Inclement weather has caused a massive multi-car pile-up on a remote, rural interstate. First responders must get to the remote area, rescue the injured, respond to the crash, clear the highway and more. The scenario included cell-site enabled drones that provide emergency wireless coverage, a helicopter drone for real-time video surveillance, mobile Mutualink Edge IWS interoperability and radio gateways for on-scene EMT communication with area hospitals. Separate Mutualink incidents improved situational awareness for responder and enabled EMTs to triage patients with input from doctors in hospitals. First responders from Columbia County, GA Emergency Management Agency worked with Perry, GA Fire Department, along with a variety of emergency medical technicians and doctors. Following a presentation of the exercise, New Jersey emergency responders will discuss the lessons learned and how they apply to the New Jersey first responder and hospital communities.

Director-level practitioners from healthcare and county emergency response organizations will provide sample use cases.

BREAKOUT SESSION: How Can Mapping Help? / 9:00am - 10:15am / Mambo 1

Tom Rafferty, NJSP; David Rickert, Burlington County OEM: This presentation will touch on how mapping can help you prepare, mitigate, response, and recover from a disaster. It will also touch on some new Ideas to help educate the community on what is going on around them. We will talk about how mapping can make your life easier.

BREAKOUT SESSION: Operation Black Snake / 9:00am - 10:15am / Castanet 2

Neil Glassman, Team Rubicon: Operation Black Snake: Model Collaboration Between Volunteers & Local Govt in Disaster Response - On September 25, 2018, intense rainstorms in Northern New Jersey dropped three to eight inches of rain over a ten-to-12 hour period resulting in widespread flooding in Hudson and Bergen Counties. That afternoon, the Hudson County OEM advised Team Rubicon that Secaucus was hit particularly hard. Team Rubicon immediately opened lines of communication with the Secaucus OEM and others in the town government. After conducting reconnaissance and holding further discussions with Secaucus officials, Team Rubicon spun up Operation Black Snake. From September 30 through October 4, 39 Team Rubicon volunteers provided approximately 1000 hours of services, with a value of just over \$24,000, to 18 homes in Secaucus. Unique to this operation was the close collaboration between Team Rubicon and the Secaucus government and community, most notably, the Secaucus Department of Public Works. This breakout will show how prompt and frequent communication between volunteer resources and local officials resulted in swift and effective service to the community. The manner in which this operation was conducted can serve as a model for other communities in rapid, cost-saving response using volunteer groups such as Team Rubicon.

FEMA- Shelter in Place / 10:30am- 11:45am / Carousel

This workshop is intended for any organization to learn more about the challenges of sheltering the general public in place for an extended period of time. This workshop utilizes an improvised nuclear device scenario to place discussion in context, but attendees will draw out many lessons learned for more frequent or likely scenarios. The agenda will include:- Medical effects of ionizing radiation- Principles of sheltering in place- Alternative methods of communication- Target Audience: Any emergency planner, particularly from private industry, educational facilities, houses of worship, healthcare facilities, or other whole community partners.

BREAKOUT SESSION: State Mobile Field Force Program / 10:30am - 11:45am / Mambo 2

Lt. Dave Sierotowicz, NJ State Police; Lt. Clay McClain, NJ Department of Corrections; Sgt. David De Jesus, NJ State Police; Michael Urbanski, NJ Office of Homeland Security and Preparedness.

BREAKOUT SESSION: Creating a Culture of Access / 10:30am - 11:45am / Castanet 1

B. Madeleine Goldfarb, Access Council: Emergency managers and allied professionals will be faced with the challenge of keeping citizens safe in any emergency. Citizens with disabilities and access and functional needs will present unique challenges to all emergency processes and systems. By deconstructing what we do as emergency managers we can reconstruct a process of systems delivery which takes into account the varied and unique needs of the whole community. This starts in blue skies, but ultimately is tested in an emergency situation. Regardless of origin, the processes in place and culture of access within the community will influence positive outcomes for citizens. This breakout session will work with emergency managers to explore what their own culture of access means in varying situation from blue skies to all hazards planning. We will deconstruct the Threat and Hazard Identification and Risk Assessment (THIRA) and Stakeholder Preparedness Review (SPR) Guide Comprehensive Preparedness Guide (CPG) 201 3rd Edition May 2018 and look at opportunities to increase an inclusive footprint into planning and doctrine. Participants will be able to identify modalities which will strengthen their capacity to support citizens with disabilities and access and functional needs.

BREAKOUT SESSION: Dam Emergencies: Planning, Exercising and Responding / 10:30am - 11:45am / Mambo 1

Zachary Kohl, Clint Oman, Sarah Hatala, NJDEP: It wasn't long ago that New Jersey faced tremendous rainfall events such as Tropical Storm Irene in 2011 and the Burlington County Flood in 2004, which wreaked havoc on dams in the State. With all dams, there comes the potential for emergency situations to develop. The New Jersey Department of Environmental Protection's Bureau of Dam Safety works to ensure the safety and integrity of dams in New Jersey, thereby protecting people and property from the consequences of dam failures. The Dam Safety Program is responsible for the oversight of approximately 1,700 dams in the State and it is critical that dam owners and emergency management officials are prepared to respond to dam emergencies. The goal of this presentation is to provide an overview of how dams fail, recognition and response to dam emergencies, security concerns, and recent case studies. Additionally, this presentation will outline the importance of emergency action planning for dams and engage participants with an interactive dam emergency exercise.

BREAKOUT SESSION: OEM and School Security / 10:30am - 11:45am / Castanet 2

A break out session to discuss the relationship between schools and OEM. Answers to these questions and more. How do we get the conversation started? What will be the benefits of a partnership with your schools? Have you spoken to your school leaders? What are we doing to make that connection happen? What more can we do? What areas do we need to improve? What role will OEM play in a school crisis situation? Do you know what your school's response is to a multitude of hazardous situations? Does the school know what your response and expectations are? This will be an interactive discussion and participant will gain valuable knowledge into rapidly evolving the school safety and security.

BREAKOUT SESSION: Inside EDs During a Crisis—Available Data & Analyses for Emergency Response / 1:00pm - 2:15pm / Mambo 2

Lisa McHugh, NJDOH; Teresa Hamby, NJDOH: The New Jersey Department of Health has a system in place that collects, in real time, the reasons

for approximately 98% of visits to emergency departments across the state. This system, known as EpiCenter, includes analyses, charting and mapping capabilities that allow users at all levels (facility, local health, and statewide) to monitor trends and look for unusual increases in visits related to large gatherings, environmental events, or disease outbreaks, as well as single visits for illnesses such as Anthrax, Botulism or Ebola. Please join this session where the emergency planning and preparedness capabilities of the system are described as well as how it's been used for monitoring opioid overdose visits, occupational exposures and other disease trends over the past 7 years.

NJ Statewide Fire Resources / 1:00pm - 5:00pm / Bossa Nova

The Office of Fire Department Preparedness (OFDP) coordinates and plans for the deployment of fire service resources throughout New Jersey and when requested by other states or federal agencies. The OFDP will facilitate a safe and efficient response to any emergency incident or event that requires the deployment of New Jersey's fire service resources in order to protect life and property from the danger or destruction by fire, explosion or other disasters. The OFDP will: Assist the State Fire Coordinator in the deployment of resources in major incidents or events, Provide assistance and support to the County Fire Coordinators prior to and during major incidents or events, Provide training and education to County Fire Coordinators, Collect and disseminate fire service resource information, Work on projects that will enhance the response capabilities of the fire service of New Jersey, Develop working relationships with federal, state, county and local agencies, Assist local fire departments and County Fire Coordinators in developing and refining mutual aid plans, Respond to major emergencies throughout the State and region, Staff State, County and Local EOC's when requested, Research, develop and implement statewide interoperability solutions, Organize regional fire service response Task Forces and Strike Teams

BREAKOUT SESSION: Eastbrook School Bus Accident - Challenges of a Multi-jurisdictional Incident / 1:00pm - 2:15pm / Castanet 2

Steven Mehl, Paramus OEM: An accident occurred in Morris County, NJ involving a Paramus (Bergen County) school bus resulting in 2 deaths and over 40 injuries. The NJSP and Morris County EMS responded to manage the scene. Paramus OEM and emergency services responded to deal with the school officials, parents, and the media and to coordinate with the NJSP and six receiving hospitals to identify the casualties and obtain information to provide to the families.

G402 - ICS Overview for Executives / Senior Officials / 1:00pm - 5:00pm / Bongo

The purpose of this course is to provide an orientation to executives and senior officials (including elected officials, city/county managers, agency administrators, etc.) an orientation to the Incident Command System (ICS). It covers what ICS is, organization and features, discuss the unified and area commands, coordination and incident management assessment and ICS preparedness.

BREAKOUT SESSION: NJ Electric Utilities - Public / Private Sector Partnerships / 1:00pm - 2:15pm / Castanet 1

NJ Electric Utilities - Public / Private Sector Partnerships, How your NJ Electric Utility prepares itself and collaborates with local, county, state and federal agencies and personnel to ensure we are all prepared for daily electric emergencies and all significant weather events including thunderstorms, winter storms and hurricanes.

BREAKOUT SESSION: CERT Regional Rodeos / 1:00pm - 2:15pm / Mambo 1

Overview of New Jersey Community Emergency Response Teams (CERT) activities, events, training and proposed regional rodeos.

Demonstration- FEMA and Disaster Recovery Centers (DRC) / 2:00pm - 4:00pm / Carousel

Session participants will have the opportunity to hear from FEMA subject matter experts who will provide information on their role in the Disaster Recovery Center operations and specialized equipment they are able to utilize. Subject matter experts will include representatives from FEMA's Individual Assistance program, Logistics, Information Technology, and Disaster Emergency Communications. Representatives will discuss how these groups work together with State partners for successful operations to reach disaster survivors. A small, temporary Disaster Recovery Center will serve as a backdrop to showcase equipment and allow session participants to see what an operational Disaster Recovery Center will look like and walk through to view equipment. Presentations will also feature information on Disaster Recovery Center Operations in limited to no-communications environment.

BREAKOUT SESSION: National Emergency Management Basic Academy in NJ / 2:30pm - 3:45pm / Mambo 1

Lt. Ronald Roberts, NJSP: An overview of the Emergency Management Professional Program. The Basic Academy is a gateway for individuals pursuing a career in emergency management. Similar to basic academies operated by the fire service and law enforcement communities, the National Emergency Management Basic Academy will provide a foundation education in emergency management. The goal of the Basic Academy is to support the early careers of emergency managers through a training experience combining knowledge of all fundamental systems, concepts, and practices of cutting-edge emergency management. The Academy provides shared classrooms of adult learners and skillful instructors resulting in a solid foundation upon which to build further studies and sound decisions. Federal Emergency Management Agency Emergency Management Institute's overview of the Emergency Management Professional Program. The vision of the Federal Emergency Management Agency's (FEMA's) Emergency Management Institute (EMI) is to strengthen the field of emergency management by establishing an Emergency Management Professional Program (EMPP). The EMPP provides a structured and progressive framework for acquiring the knowledge, skills, and abilities to enter and progress through the field and to meet the challenges of a dynamic and complex environment. The entire EMPP curriculum is designed to provide a lifetime of learning for a career in emergency management. The EMPP includes three academies: National Emergency Management Basic Academy, National Emergency Management Advanced Academy (formerly the Leaders Academy), National Emergency Management Executive Academy

BREAKOUT SESSION: PSE&G Response to Massachusetts Gas Explosion / 2:30pm - 3:45pm / Castanet 2

This session will discuss PSE&G's response to a large gas explosion impacting three northern Massachusetts towns in September that resulted in one fatality, twenty-one injured, over 40 structure fires and 8,000 customers having their gas turned off. PSE&G will discuss their mobilization, deployment of Mutual Assistance personnel in multiple waves over three months, and on-scene incident management and multi-agency coordination. PSE&G will also discuss how the likelihood of such an incident in New Jersey is greatly reduced based upon operating conditions of some of the New Jersey Gas Delivery Companies.

BREAKOUT SESSION: Working with the American Red Cross / 2:30pm - 3:45pm / Mambo 2

Lauri Gill, American Red Cross: This presentation is designed for our Emergency Management and Response partners (Faith Based groups, businesses, NGOs, MRC, DRCC, CART, etc.) Please join us to learn what happens behind the scenes of a Red Cross response; from a single family fire to a large scale disaster response. Included will be an overview of Red Cross community preparedness and resiliency programs, our work establishing and maintaining readiness, developing and maintaining partnerships, and an overview on the benefits of entering into an MOU in advance of a disaster response. Information on scheduling free trainings and exercises, appropriate contacts for specific needs and where we are in your community will also be provided as well as time for Q&A.

BREAKOUT SESSION: The Opiate Epidemic as a Public Health Emergency / 2:30pm - 3:45pm / Castanet 1

Megan Sullivan, Disaster & Terrorism Branch, DMHAS: The continued rising trend of drug overdose deaths, primarily related to opiates, has reached 72,000 in 2017. This has moved beyond a behavioral health issue into a public health emergency. This presentation will examine how the trend began, how intervention and treatment is addressing it, and how workers in public health and emergency response can act in New Jersey.

THURSDAY, MAY 2, 2019 • TRAINING AND BREAKOUT SESSIONS**Understanding and Planning for School Bomb Incidents - UPSBI / 8:00am - 12:00pm / Bossa Nova**

The UPSBI course provides first responders with the skills and knowledge necessary to respond to school bomb threats and school bombing incidents. This course provides information on the purpose and function of school emergency management plans, warning signs of aggressive student behavior, critical actions when responding to a school bombing threat, recognition of Improvised Explosive Devices (IEDs) and components, and preventive school bombing incident measures. Learning Objectives: Identify the purpose and function of a school emergency management plan including the four phases of emergency management, Recognize warning signs of aggressive behavior, Identify response actions based on scenario types and bombing hazards, Identify Improvised Explosive Devices (IEDs) and their components, Recognize school security measures and training components necessary in an effective school bombing response plan.

BREAKOUT SESSION: Natal -UASI Resilience Overview / 9:30am - 10:45am / Bongo

Theresa Reiss, The Valley Hospital: Natal -UASI is a collaborative initiative to give first responders the tools needed to prevent or lessen the effects of cumulative stress. The astounding fact is that there are more first responders taking their own lives than there are line of duty deaths. In the past we send our people out in the world with very little resources to deal with what they are going to encounter. CISM is a wonderful resource but we need to do more, we need to educate new and experienced in techniques that will decrease burnout, turnover, sick time and operational errors. This overview will cover why we all need this, survey results from 155 emts, paramedics and nurses, and how experiential learning and stress reducing techniques can be used in our daily practice.

BREAKOUT SESSION: GSA Overview / 9:30am - 10:45am / Carousel

GSA is America's only source solely dedicated to procuring goods and services for government. As an integral part of GSA, the Federal Acquisition Service (FAS) possesses unrivaled capability to deliver comprehensive products and services across government at the best value possible. This course offers an overview of how the GSA works with other partners in areas of emergency preparedness and disaster recovery, and the role your dedicated Customer Service Director (CSD) plays in bringing all of the innovative solutions and services GSA offers directly to you.

BREAKOUT SESSION: Improvements in the Messaging of the NWS Since Superstorm Sandy / 9:30am- 10:45am / Castanet 3/4

Following Superstorm Sandy in 2012, it became apparent to the National Weather Service the need to more effectively communicate hazards associated with tropical cyclones, as well as those in extra-tropical transition. There were not only policy changes that stemmed from Sandy, but a clear path for better visualization. This included the addition of a Potential Storm Surge Flooding Map, Storm Surge Watches and Warnings, the Arrival of Tropical Storm Force Winds Graphics, as well as improvements to existing graphics. These improvements have allowed the National Hurricane Center (NHC) and the local National Weather Service Forecast Offices (NWSFOs) to provide a more seamless transition in the product suite and improved communication of the threats and potential impacts of the four main hazards: storm surge, flooding rain, wind, and tornadoes. These products incorporate both probabilistic and deterministic forecast information to account for the inherent uncertainty with these storms and to better communicate risk. A sample of these products will show the significant improvement made in the National Weather tropical product suite and how these tools help to better communicate the potential impacts.

BREAKOUT SESSION: Growing in the Garden State: Lessons Learned from Public-Private Partnerships in NJ / 9:30am - 10:45am / Mambo 1/2

Alison Tarnopol, OHSP; Charles Ambio, OHSP: In New Jersey, the private sector plays a critical role in enhancing homeland security and preparedness. Ongoing communication between the State and the private sector is vital in the evolving threat environment. State law in New Jersey codified an advisory body in the aftermath of September 11, 2001 to establish ongoing communication between the government and

private industry regarding domestic preparedness. However, new strategies with a sharpened focus upon resiliency, counterterrorism, and cybersecurity, inspired a reevaluation of interaction between the State's homeland security apparatus and the private sector. This presentation will explore the history and development of New Jersey's Infrastructure Advisory Committee, a body comprised primarily of chief security officers and subject matter experts across all critical infrastructure sectors, as well as representatives from various levels of government. It will highlight the benefits and challenges of communication between the State and the private sector, discuss new initiatives underway in New Jersey, and share lessons learned while demonstrating the private sector's role in bolstering New Jersey's homeland security posture.

BREAKOUT SESSION: NJ All-Hazard Incident Management Team / 9:30am - 10:45am / Castanet 1/2

Members of the New Jersey All-Hazard Incident Management Team (NJ-AHIMT) will discuss the history and mission of this new multi-agency team that provides incident management support both in-state and outside the State. The Team is administered and managed by the New Jersey Office of Emergency Management. Staff from NJOEM will present on: the Team's goals and objectives; member qualifications; training and exercising; deployments for incidents and events; expectations; and administrative issues. The speakers will also explain the process for individuals to join the NJ-AHIMT through the execution of an Inter-Agency MOU and application materials.

BREAKOUT SESSION: Operation Sneezle- Full Scale POD Exercise / 9:30am - 10:45am / Mambo 3/4

Jessica Czepiel, Burlington County Health Department; Lauren Ernst, Burlington County Health Department; Justin Wright, Burlington County OEM; Phyllis Worrell, Virtua: Real life, public health emergency incidents often strike when least expected. This is often the scenario when a terrorist attack occurs. Anthrax attacks are typically the most planned for event, however an aerosolized release of pneumonic plague should not be overlooked. In both anthrax and plague terror attacks, being able to open pre-identified Points of Distribution (PODs) quickly and efficiently to distribute medications to prophylaxis the community is a necessity. Burlington County created a three-day exercise, "Operation Sneezle," to test the County's ability to successfully facilitate distribution of lifesaving prophylactic medications to Burlington County residents. Day one exercised the emergency operation plans of healthcare facilities not yet Closed PODs. Day two was a full-scale exercise of healthcare facilities with Closed POD agreements with Burlington County. The third and final day was a full-scale exercise of two of Burlington County's Open POD sites. Through "Operation Sneezle," Burlington County has identified both strengths and challenges that were faced during each of the three days.

BREAKOUT SESSION: How do I Become a New Jersey Certified Emergency Manager (NJCEM)? / 11:00am - 12:15pm / Bongo

Joseph Allen, Emergency Manager 1 and 2: Are you involved in the New Jersey emergency management community? Have you considered applying for your New Jersey Certified Emergency Manager (NJCEM) credential? Do you want to join the over 150 professionals that already have? If you said yes, this session will provide you the information needed to submit your application! The New Jersey Certified Emergency Manager credential was established by the New Jersey Emergency Management Association, in partnership with the New Jersey County Coordinators Association, in January 2016. This professional credential recognizes emergency managers who have demonstrated a proficiency and knowledge in the laws and authorities, mitigation, preparedness, response, recovery relevant to New Jersey. The NJCEM credential is NOT the IAEM Certified Emergency Manager® credential.

BREAKOUT SESSION: Enhancing Coastal Resilience Decision-Support Tools / 11:00am - 12:15pm / Castanet 3/4

Lisa Auermuller, Jacques Cousteau Reserve: Enhancing Coastal Resilience Decision-Support Tools to Reflect Latest Local, Applied Science - New Jersey's coastal decision makers have been faced with an overwhelming plethora of data, tools, assessment techniques and planning guidance. A team at Rutgers University has been working towards creating a single, unified Rutgers' coastal hazards mapping platform which incorporates the most up to date climate science, exposure assessment techniques, and best practices in resilience planning. This effort will result in: creation of a "one stop shop" access to the most update to date NJ data and visualizations, an online version of the total water level approach and a commitment by Rutgers' to provide updated, user-centered data, tools, and planning guidance. This session will discuss the progress of this effort to date and incorporate feedback from the audience to help define next steps.

BREAKOUT SESSION: Door-to-Door Medication Distribution Plan: We Exercised it. IT WORKS! / 11:00am - 12:15pm / Mambo 3/4

John Dowd & Sherie Wolpert, Middlesex County Office of Health Services; Mark Herdman: Learn about the Door to Door medication distribution program as a method of emergency medication dispensing, to alleviate some of the responsibility from the local health agency. This model empowers the municipality to take charge of the program and provide necessary post exposure prophylaxis for their own residents. In a large scale public health emergency where post exposure prophylaxis is required, traditional Points of Dispensing (PODS) may not be able to reach at-risk populations within the required 48 hours. To complement other alternate POD methods, we have developed a Door-to-Door Medication Delivery Model, based on regular Postal Model operations, that uses the assumptions of delivery to the entire population of a municipality within 48 hours of the decision to deploy medications. Our public health department has partnered with one municipality (The Pilot program) on this initiative. Over the past three years, we have developed a distribution plan, conducted discussion meetings and tabletop exercises, culminating with a functional exercise taking place in June 2018. Beginning with a NIXLE* alert and reverse 911 to notify the residents, 50 responders showed up to methodically deliver "medication" to the city, using established fire districts. The functional exercise was conducted on a Saturday morning (June, 2018) and all "medication" for the entire municipality was delivered within four (4) hours. An additional benefit from the exercise was the increase of residents signing up with the NIXLE alert system directly after the exercise.

BREAKOUT SESSION: Using Schools As A Shelter / 11:00am - 12:15pm / Castanet 1/2

Thomas Gambino, NJ Dept of Education: Most New Jersey residents think of their local public schools as a focal point and safe place in their community. During a local or state-wide crisis, schools may be called upon to provide short-term sheltering for displaced residents. However,

there are many considerations to using a school as a shelter. After attending this session, participants will have a better understanding of how a school may serve as a shelter, what elements are required, what preparation must be done 48+ hours, 24 hours, and 12 hours, prior to sheltering, and the steps necessary to help restore school capabilities and capacity after the shelter closes.

BREAKOUT SESSION: Is Your Forecast Wrong Or Are You Using The Wrong Forecast? / 11:00am - 12:15pm / Carousel

Shawn Rampy, StormGeo: Organizations are required to constantly evaluate and respond to the risks that various weather hazards (wind, lightning, ice, etc.) pose to their ability to reliably serve their customers. The costs associated with deploying mitigating actions in response to an impending weather threat can be significant and may only be exceeded by the myriad losses incurred if decision-makers fail to execute the right response at the right time. How can an organization know that it is executing the optimal mitigating response to a weather threat at the optimal time? A Weather Risk-Response Modeling approach offers organizations a structured solution to this challenge. The end goal of this methodology is to provide business stakeholders specific, actionable, repeatable, and defensible recommendations when weather threatens their operations. In this discussion, we'll examine the three key components of the Weather Risk Response Modeling methodology as they apply to the use case of an electric distribution organization's Infrastructure storm damage and power restoration challenge.

Family Assistance Center / 11:00am - 12:15pm / Mambo 1/2

Joseph Geleta, NJ Dept. of Human Services; Bryan Hoffman, NJ State ME Office; Adrienne Fessler-Belli, Disaster and Terrorism Branch, Division of Mental Health and Addiction Services: The establishment of a Family Assistance Center (FAC) is necessary in the aftermath of a mass casualty incident or disaster and crucial to assist victims, families or anyone else directly affected by the incident. With criminal and non-criminal events resulting in many injuries and the loss of life, it is important for us all to be prepared and understand the process of setting up one. A Family Assistance Center provides a point of access for the collection and dissemination of information along with providing support from all relevant agencies to those affected by the event. Attend this breakout session to learn about the organizations involved in coordinating the FAC as well as the supporting agencies that offer the most support and services to those impacted.

Threat of Unmanned Aerial Systems / 1:00pm - 3:00pm / Bossa Nova

This mini-course will be a review of current events with an open discussion of events and experiences.

BREAKOUT SESSION: Early Season High Impact Winter Storm November 15, 2018 / 1:30pm - 2:45pm / Castanet 3/4

David Stark, NWS NY: An early season winter storm impacted much of the Northeast including New Jersey on November 15, 2018. The storm was fast moving, but had crippling impacts on the evening commute. Numerous accidents occurred and thousands of flights were cancelled at the New York City Metro airports including Newark. A heavy band of snow developed during the afternoon and continued through the evening commute bringing a quick 3 to 5 inches of snow along the I-95 corridor. Amounts increased across northern New Jersey where upwards of 8-12 inches of snow fell. The time of year in combination with much of New Jersey lying in the transition zone between temperature profiles supportive of snow and warmer air along the coast created a difficult forecast leading up to the event.

BREAKOUT SESSION: Healthcare Emergency Management in Bermuda / 1:30pm - 2:45pm / Mambo 1/2

Phyllis Worrell, Virtua; Paul Sarnese: Healthcare Emergency Management in Bermuda Not really! What happens when your emergency management professional goes on vacation? You fully evacuate one of your long-term care facilities of course! In June of 2018, while on a cruise ship docking in Bermuda, my phone started blowing up with both county and Virtua phone calls and texts. It seems that there was a "smoke condition" at one of my long-term care facilities and the fire chief had ordered a total evacuation on the hottest day of the year. While you might have wonderful plans and work with your municipal and county public safety entities, none of it matters, if the people on scene do not have a good understanding of the way healthcare agencies handle these type of emergencies and "defend in place" policies. While many things went well, there are some great opportunities for improvement, which will be discussed during this presentation.

BREAKOUT SESSION: EMAC: A Detailed look at EMAC for Managers and Deploying Resource Providers / 1:30pm - 2:45pm / Mambo 3/4

Kevin Palmer, NJSP: This course will present a detailed look at the EMAC process. Participants will gain an understanding of the history of EMAC, the legal foundations of EMAC, understand who and what can deploy under EMAC, learn how to prepare a Mission Ready Package, and understand the reimbursement process through EMAC. The program will go "step-by-step" through the EMAC process, and will allow the participants to gain an insight and understanding of the roles of the requesting states, the assisting states, and the resources being deployed. It is the goal of this program to provide education in the area of EMAC and to help resource providers properly prepare for deployment, know how to document deployments, and how to properly submit for reimbursement.

BREAKOUT SESSION: Engaging the Faith-Based Community in Disaster Response and Recovery Efforts / 1:30pm - 2:45pm / Castanet 1/2

Araif Yusuff; Joe Luste; Keith Adams; Beth Gebhart; Kenton Hunt: As Emergency Managers we are always seeking additional resources to support our response and recovery operations. Building partnerships is a key way to ensure that our emergency management plans are functional when disaster strikes. The Faith-Based community can serve as a vital supporting partner in any emergency management plan. From mass care operations to mucking out homes, from feeding operations to volunteer support, the Faith-Based community can make a difference. Learn about the NJ Interfaith Council and how congregations across the state are partnering with emergency managers to offer support and vital resources during disasters.

BREAKOUT SESSION: Amateur Radio for Emergency Managers / 1:30pm - 2:45pm / Carousel

John Garmendi, Middlesex County OEM: (NOTE: THIS IS NOT AN AMATEUR RADIO LICENSE CLASS / TEST SESSION) Amateur or "HAM" radio

has proven to be indispensable in the aftermath of Hurricanes Harvey, Irma, Michael and Maria. Historically, Amateur radio has been a valuable resource in the Response and Recovery phases of many disasters, providing expedient communications when standard public safety and commercial telecommunications infrastructure has been severely impacted or completely overwhelmed. Do you have an amateur radio component as part of your ESF-2? Why not!? This workshop will provide guidance to Emergency Managers on establishing a viable, NIMS compliant, AUXCOMM (Auxiliary Communications) program as part of your EOP. TOPICS TO BE COVERED: How to establish an Auxiliary Communications program within your jurisdiction, How / where to recruit members, and how to keep them motivated., Where does Auxiliary Communications sit in the NIMS COMU (Communications Unit) organization? What are ARES, RACES, AUXCOMM, SKYWARN, REACT- Differences? Overlap? Coordination / Integration into your program, What resources / support are available from the State and Federal Governments What equipment is required / how much will it cost?

BREAKOUT SESSION: Mitigation Through Integration / 1:30pm - 2:45pm / Bongo

Mike McCabe, Hudson County OEM EMS: Mitigation Through Integration is a lecture that looks at the current “gaps” in our mindset as it relates to training and philosophy. The “dated” practice of preparing through discipline specific training is holding us back as a response community and lending itself to sub par operation success. The lecture discusses the need for integrating our process through joint training, a general understanding of what each discipline (LE, Fire, EMS, OEM) bring to an event, what resources exist, how to request the resources, etc. Further, the lecture focuses attention on the importance of the Rescue Task Force model and how to obtain “buy in” from all disciplines in order to develop one. Common terminology, Interoperability and the essence of getting control of a large scale incident within the first twenty minutes are discussed.

BREAKOUT SESSION: NJ State Sheltering Task Force / 3:00pm - 4:15pm / Castanet 1/2

Learn about updates from the NJ State Sheltering Task Force from meetings with both County and Urban areas of our state regarding sheltering issues. Find about the recommendations discussed and the State’s Mass Care Sheltering Strategy. Receive updates on efforts undertaken by the Task Forces Subcommittees for Facilities, Staffing and Disabilities and Access and Functional Needs.

NY/NJ Bombings Case Studies / 3:00pm - 5:00pm / Bossa Nova

This mini-course will be a review of past events with an open discussion of events and experiences.

BREAKOUT SESSION: Winter Storms of March 2018- NJ BPU’s Response to the Power Outages / 3:00pm - 4:15pm / Castanet 3/4

Brian Beam & Jim Bruncati, New Jersey Board of Public Utilities staff, will discuss their review of the actions taken by Public Service Electric & Gas, Jersey Central Power & Light, Atlantic City Electric and Rockland Electric Company before, during and after each of the 3 nor’easters that struck New Jersey in March 2018. More than 1.2 million electric utility customers were without power, some for as long as 11 days.

BREAKOUT SESSION: QPR (Question, Persuade, Refer) / 3:00pm - 4:15pm / Bongo

Maurice Sheppard, Disaster & Terrorism Branch, DMHAS: Anyone can save a life from suicide. the key is to know the signs and how to intervene. Gatekeepers can be anyone, but include parents, friends, neighbors, teachers, ministers, doctors, nurses, office supervisors, squad leaders, foremen, police officers, advisors, caseworkers, firefighters, and many others who are strategically positioned to recognize and refer someone at risk of suicide. As a QPR-trained Gatekeeper you will learn to: Recognize the warning signs of suicide Know how to offer hope Know how to get help and save a life

BREAKOUT SESSION: From Gunfire to Wildfires / 3:00pm - 4:15pm / Mambo 3/4

Ed Dobleman, CIT-NJ Director, and Janice Campbell Co-Founder and President of Tri State Canine Crisis Response Team will present on our CA deployment covering- from gunfire to wild fires. Deployed at the invitation of the Ventura County Sheriff’s Department (who lost a member during the Thousand Oaks shooting), the deployment demonstrated the ability of the team to quickly switch direction when responding to emergencies. This area has been hit twice-first with the deadly shooting, followed close behind with the devastating wildfires.

BREAKOUT SESSION: New Jersey National Guard Support for Domestic Operations (DOMOPS) / 3:00pm - 4:15pm / Mambo 1/2

In response to domestic emergencies & when directed by lawful authority, The Adjutant General provides & directs NJNG Joint Forces & capabilities to support civil authorities in protecting NJ’s citizens. The Joint Operations Center (JOC) is the sole portal linking NJNG resources to the governor & civic leaders for domestic operations. The JOC’s cadre force, the J-3 Directorate leads, plans, coordinates & manages all aspects of NJNG support to Civil Authorities. The JOC enables the activation of the Joint Staff, Joint Task Force &, if federal forces & capabilities are needed, the Dual Status Command. The JOC cadre is an expeditionary force capable of assisting other states, if requested. The JOC receives leverages, develops, & provides Shared Situational Awareness reports via multiple collaborative platforms to reflect a Common Operating Picture and apprise the Joint Force, state & federal authorities of current & future operations & capabilities for domestic operations in NJ, & beyond.

FRIDAY, MAY 3, 2019 • TRAINING AND BREAKOUT SESSIONS

Marjory Stoneman Douglas Response- Preparation, Lessons learned, and the Aftermath / 9:00am - 12:00pm / Mambo

A presentation from the Coral Springs Police Department providing an overview of the training and equipment deployment that preceded the tragedy at Marjory Stoneman Douglas on February 14, 2018. As first responders who were there, the presenters will provide their unique perspective on how the event unfolded that day, as well as the litany of issues their Department and community faced in the aftermath. Pre-

registration Required.

BREAKOUT SESSION: Autism 101 for First Responders / 9:00am - 10:15am / Castanet 3/4

Gary Weitzen, POAC Autism Services: Assisting citizens in emergency situations is always a challenge but when those people have disabilities, they present unique and often complex needs, in both Emergency Preparedness and Emergency Services Provision. Physical impairments can restrict a person's mobility. Use of equipment, such as power wheelchairs, can pose transportation problems. Speech, hearing, emotional, learning and communication disorders can affect a person's explanation of problems, asking of questions, following directions, reacting appropriately. A First Responder's ability to identify such additional issues and know how to address them can make a critical difference in achieving a speedy, successful resolution to an emergency situation. This session is provided by the NJ Statewide Independent Living Council, an organization that promotes inclusive living for New Jersey's citizens with disabilities.

BREAKOUT SESSION: FEMA Individual Assistance-Lessons from Hurricane Maria / 9:00am - 10:15am / Castanet 1/2

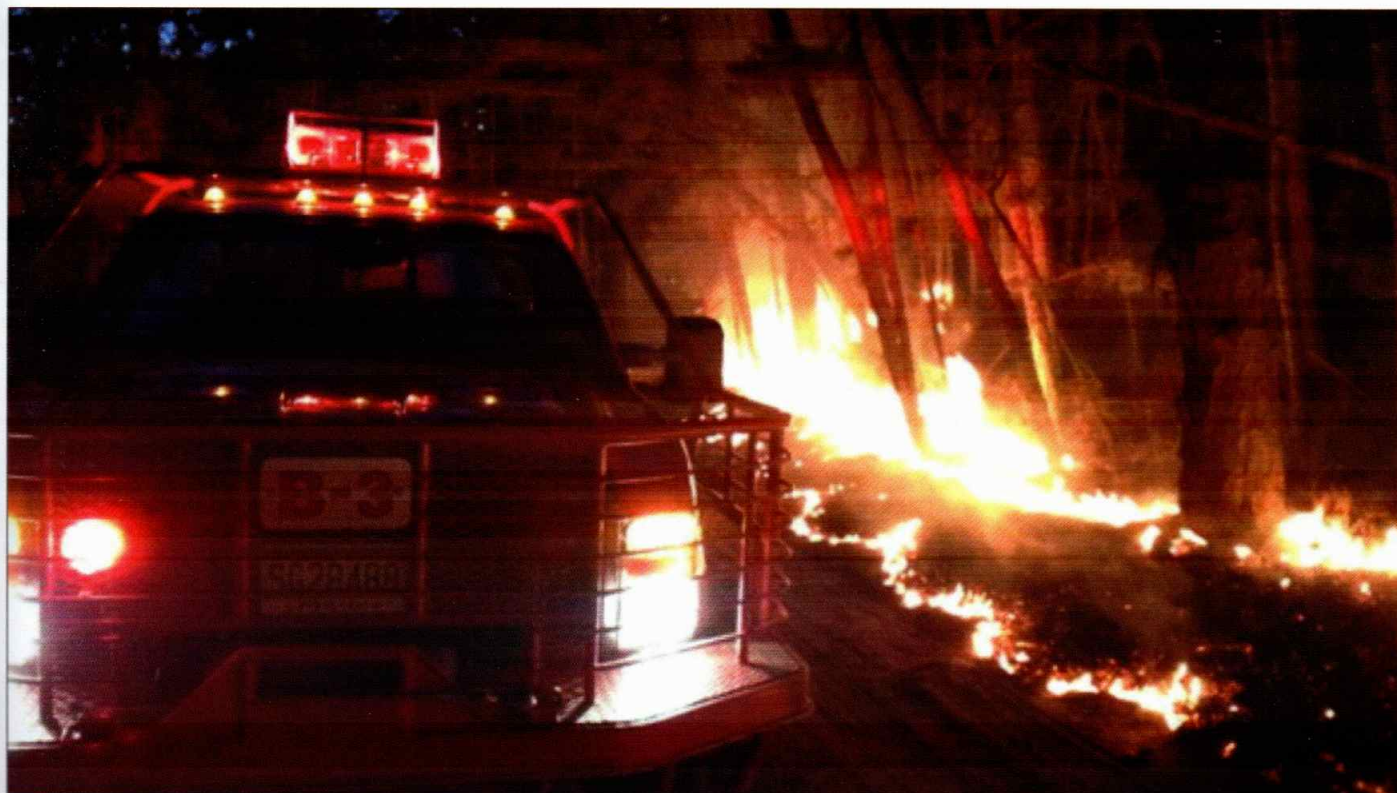
This session provides an overview of the challenges faced during Hurricane Maria response and recovery in Puerto Rico and a few of the innovative solutions that have been employed to address those challenges including Voluntary Agencies Leading and Organizing Repair (VALOR) which provides operational support to voluntary agencies performing work and services essential to sustaining life and protecting health, safety and property and the Community Recovery Center (CRC) model which is intended to provide a localized, community-based "one-stop shop" approach to disaster recovery by joining elements of Disaster Recovery Centers (DRC), Multi-Agency Resource Centers (MARC), Unmet Needs Roundtables, and Long-Term Recovery Groups. A panel of FEMA Region 2 staff who were involved in developing and implementing these new programs will provide background and discuss lessons that can be applied in planning for local disasters.

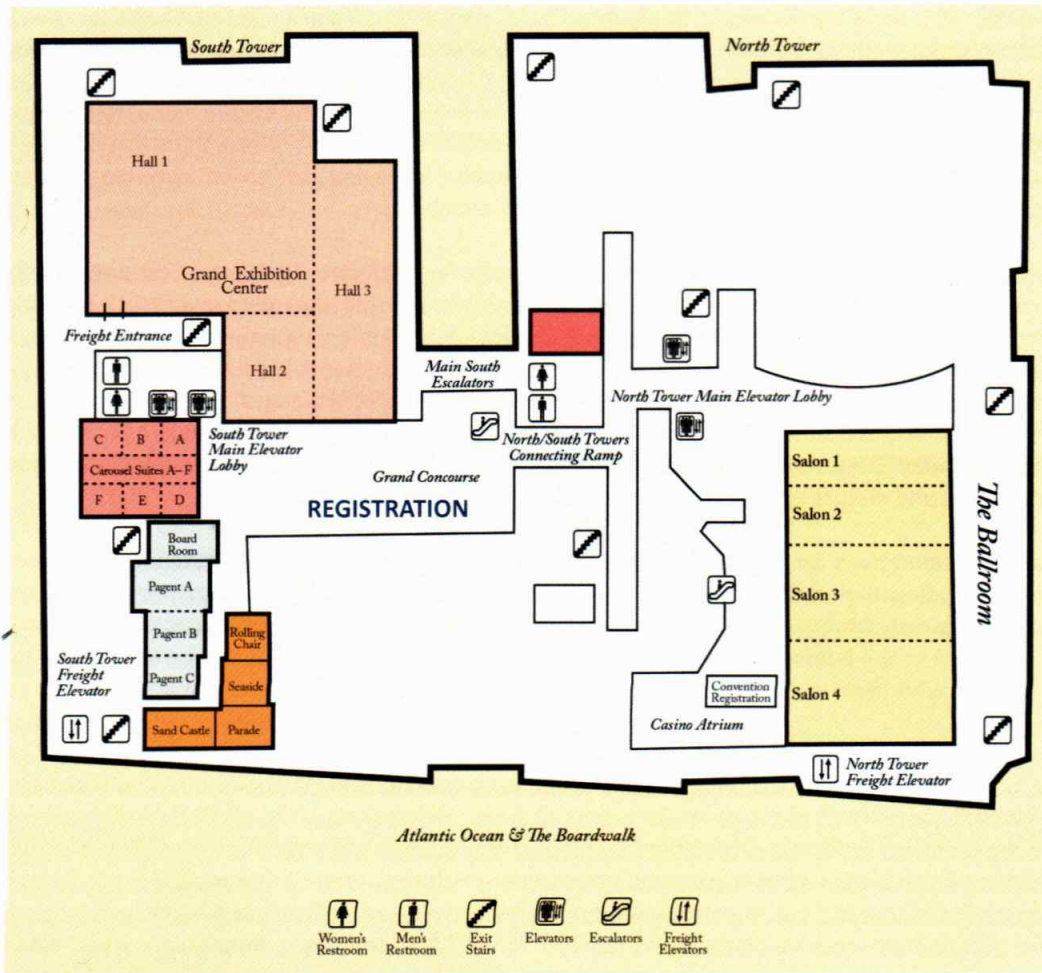
BREAKOUT SESSION: Health Considerations for All Emergency Responders / 10:30am - 11:45pm / Castanet 1/2

What are the concerns Emergency Responders face today that can affect their health? During this program we will look at some of the basic, common sense information with a close look at the health implications involved with today's complex circumstances and interactions. Class discussions will be used in addition to the information provided to see how other agencies are responding to and how to make the response safer to all responders. As well as what and how their health could be affected and how could the culprit be passed on to others?

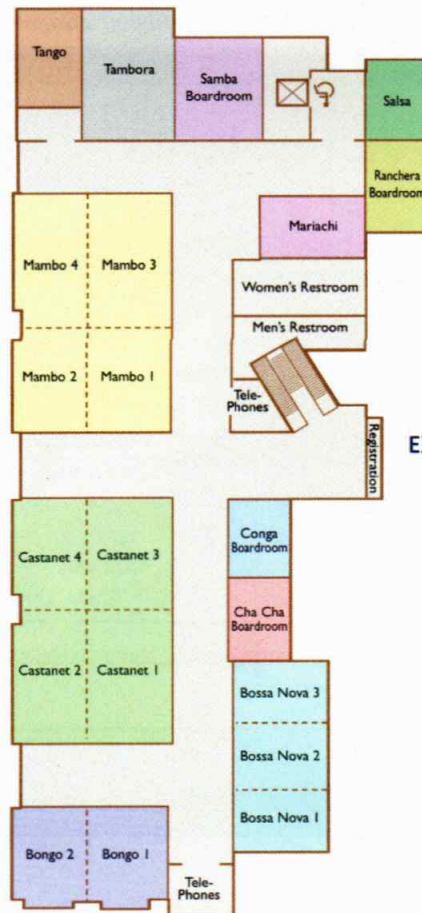
BREAKOUT SESSION: Don't Become a Social Media Statistic / 10:30am - 11:45pm / Castanet 3/4

Social media is a valuable, and critical, tool for EMS organizations to use for communicating in good times and bad. Being on social media is a must these days. But with that comes real risks. So how do we avoid these mishaps? And how do EMS leaders set boundaries for what's appropriate and not as an organization, while also protecting the rights of members to express themselves? This class will provide attendees with an easy-to-use framework for the safe use of social media platforms – including Twitter, Facebook, SnapChat and more. They'll learn about effective messaging and how to avoid controversy. Attendees will learn how to get members working for them in this process, not against them. They'll learn how to craft social media policies that work for all. Most important, they'll learn what to do when they're facing





HAVANA TOWER
LEVEL 4
MEETING ROOMS



EXPRESS REGISTRATION

EXHIBITORS



AI Care LLC

American Innotek American Signal Corporation (ASC) is a leading designer and manufacturer of mass notification solutions for a wide variety of applications worldwide.



AramSCO is a national distributor providing environmental safety, emergency response, cleaning, and surface preparation products and solutions.



AT&T



An Exelon Company

Atlantic City Electric is a unit of Exelon Corporation, the nation's leading energy provider. Atlantic City Electric provides clean, safe and reliable energy service to approximately 556,000 customers in southern New Jersey. Atlantic City Electric is committed to investing in the local energy grid to further improve reliability for customers, and to supporting the communities it serves in a number of areas including environmental stewardship, emergency partnerships, and youth and education. As part of this commitment, Atlantic City Electric recently launched a six-year \$6.5-million workforce development initiative, and in 2018 it contributed more than \$1 million to local nonprofits, while its employees volunteered more than 21,000 hours to help support hundreds of local organizations.



AVS Installation LLC



Colonial Pipeline Every day, Colonial Pipeline safely and efficiently delivers more than 100 million gallons of gasoline, home heating oil, aviation fuel and other refined petroleum products.



Department of Community Affairs, Division of Fire Safety

Esri applies The Science of Where to unlock data's full potential in every organization. We continue to pioneer real-world problem solving using geographic information systems (GIS).



Everbridge is the global leader for integrated critical event management solutions to help keep people safe and businesses running faster.



Since 1996, **FDR Hitches** has been selling and servicing the truck equipment industry. We offer only the highest quality products. Some of our brands are United and Carmate Enclosed Trailers, Fisher and Western Plows and Spreaders, Warn Winches, TruckCraft Dump Inserts and Truck bodies. Call us today for a quote.



Fire & Safety Services Ltd. of South Plainfield NJ represents Pierce Mfg. and Frontline Communications for the entire State of New Jersey. We are a full sales, service and parts facility for both manufacturers. We look forward to educating you on what these manufacturers have to offer you.



Fire News Since 1973, Fire News has been dedicated to serving Fire, Rescue, & EMS heroes. Our six editions, social media pages, & website, FireNews.com feature great photos, report on current issues, & is a valuable resource for the latest products & services.



Firefighter One is at your service as a vendor of first responder equipment, gear, and apparatus with an exceptional level of customer support.



Firstnet



Futurity IT features two products that will streamline your paper processes. Come by our booth to see our easy to use mobile solutions: Orion Damage Assessment and our new Athena TaskPro.



Grainger



Hyper-Reach® Instant Team & Mass Notification System. Reliable, Innovative, Feature-rich. High community enrollment, precise targeting and simplicity of use. IPAWS, Weather alerts included!



IdentiSys Inc.



IP Access International We are a global provider of mobile and fixed satellite solutions, delivering high performance, end-to-end mission critical voice, video and data communications over our Ku Band satellite network for over 20 years. We provide equipment, installation, service and methodologies to support First Responders in their efforts to remain connected to national and global networks during incidents where radio, LTE and/or broadband networks either do not reach or that are experiencing event failures. Over the IP Access Select network, we provide multi-satellite solutions that ensure connectivity for critical systems that are not reliant on terrestrial networks to complete the delivery tasks required.



Jersey Central Power & Light With regional headquarters in Morristown and Holmdel, Jersey Central Power & Light (JCP&L), provides electric service to approximately 1.1 million customers in 13 counties within a nearly 3,200-square-mile area of northern and central New Jersey. JCP&L is a subsidiary of FirstEnergy, a forward-thinking electric utility powered by a diverse team of employees committed to making customers' lives brighter, the environment better and our communities stronger. In 2018, JCP&L invested nearly \$360 million in transmission and distribution projects designed to enhance service reliability. Follow JCP&L on Twitter @JCP_L, on Facebook at www.facebook.com/JCPandL, or online at www.jcp-l.com.



Juvaré



LAURUS specializes in the sales, service, and calibration of instruments for detecting and identifying radiation and chemical substances for HazMat, emergency responders and homeland security.



Mutualink, Inc. provides secure interoperable communications and information sharing solutions for emergency management, first responders, and armed forces, as well as security and protective services.



New Jersey Emergency Management Association is led by current emergency management professionals representing many local communities throughout NJ. Our dedicated professionals understand today's challenges and work tirelessly to advance the profession through multi-jurisdictional collaboration, innovative trainings and strategic partnerships with the private sector and non-governmental organizations.



New Jersey Emergency Vehicles sells PL Custom, Rescue 1, Smeal, Miller Coach and Danko products throughout New Jersey and services any make of emergency vehicle and fire apparatus



New Jersey Fire Museum and Fallen Firefighter Memorial preserving the technological & cultural history of the fire service in NJ & memorizing those who served their communities!



NJ 2-1-1 Partnership is a statewide information and referral service connecting people in need, with health and human services, during blue skies and gray. A trusted partner, written into the State Emergency Operation Plan - ESF 6, 8, 15 and Volunteer Management Annex. Warming Centers. Cooling Centers. Disaster Preparedness/Response/Recovery. Open 24/7/365 www.nj211.org.



New Jersey Department of Environmental Protection – Bureau of Dam Safety The Bureau of Dam Safety works to ensure the safety and integrity of dams in New Jersey, thereby protecting people and property from the consequences of dam failure.



NJM Insurance Group is among the Mid-Atlantic region’s leading property and casualty insurers, providing personal and commercial auto, homeowners, renters, umbrella, and workers’ compensation insurance.



OceanFirst Foundation provides grants to organizations that meet community needs within the OceanFirst Bank’s footprint. Through the Foundation, hundreds of charities and schools received more than \$37 million enriching lives in areas such as Housing, Youth Development and Education, Improving the Quality of Life, Health and Wellness, and the Arts.



PMC Associates is a family owned and operated business providing wireless communications solutions to the public safety community for over 25 years.



Point Blank Enterprises



Police and Fire Federal Credit Union PFFCU Join the region’s largest credit union—Police and Fire Federal Credit Union. Service, Knowledgeable and friendly Member Service, Representatives, Value, Trust. Members are eligible to receive up to \$1,000 with our New Member Bonus Program.1 Convenience 14 conveniently located full service branches in Philadelphia, the suburban counties, and New Jersey. 94% of surveyed members rated PFFCU as Exceptional or Superior in the overall Consumer Lending



Public Service Electric and Gas Company (PSE&G) PSE&G is one of the largest combined electric and gas companies in the United States and is also New Jersey’s oldest and largest publicly owned utility. The Public Service Corporation was formed in 1903 by amalgamating more than 400 gas, electric and transportation companies in New Jersey. It was renamed Public Service Electric and Gas Company in 1948. PSE&G is the largest subsidiary of Public Service Enterprise Group Incorporated (PSEG) (NYSE:PEG), a diversified energy company. (www.pseg.com). PSE&G serves nearly three quarters of New Jersey’s population in a service area consisting of a 2,600-square-mile diagonal corridor across the state from Bergen to Gloucester Counties.



Rave Mobile Safety is a leading provider of emergency management solutions to state and local agencies. Our award-winning portfolio of Rave911 Suite including Smart911, Rave Alert, Rave Panic Button, and Rave Prepare enables millions to feel safe, secure and connected. Rave Mobile Safety is headquartered in Framingham, MA.



Safeware Inc.



Servpro Team Green



Share 911 A new 911 system purpose-built for school and workplace emergencies. Share911 is more than a phone call between two people. It's the fastest way for an employee to share their location with co-workers, security, first responders and 911 operators when they see danger, are trapped or having a medical emergency.



STARLITE is a New Jersey-based company providing audio, visual, and lighting solutions for all your planned and urgent systems, service, rentals, and sales needs. Booth #213.



StormGeo is a global provider of weather intelligence and decision support services, with leading solutions for shipping, oil and gas, renewable energy and aviation. Our products and services help clients manage risk, optimize performance, reduce costs and increase revenue. As a participant in the UN Global Compact for Sustainable Ocean Business, our passion for weather and the protection of natural resources motivates us to support our clients in making informed, environmentally responsible business decisions. For more information, visit www.stormgeo.com.



Stryker Emergency Care/EMS



SUB U Systems Information Assurance manufactures secure, enterprise-level IP networking appliances in small, low power form factors for FirstNet, IoT and M2M applications.



The Response Group (TRG) is the industry leader in providing a quality suite of emergency response software and services. Through the appropriate and accurate implementation of technology, process interpretation, and creativity, we provide practical and cost-effective solutions to the full spectrum of our clientele. Come visit us at Booth 208!



Thomas Edison State University



TSI strives to provide global innovative solutions. We manufacture and sell instruments that measure everything from atmospheric aerosols to the fit of a personal respirator.



VCI Emergency Vehicle Specialists Sales, Service, Heavy Duty Body Shop, Graphics & Custom Set-up for Emergency Vehicles



Veoci is a suite of collaboration, management, emergency response and daily operations tools designed to meet the decision making and communication requirements of multiple teams at many locations. Create and launch custom plans at the click of a button, assign tasks, communicate with all teams instantly, create organized reports and much more.



V.E. Ralph offers a complete line of emergency medical, mass casualty, and incident command equipment. For over 60 years, we have served public safety providers and emergency management teams in both the public and private sectors. We can source, specify and deliver a wide range of products for your needs.

Verizon Wireless Business Continuity and Disaster Recovery ("BC/DR") program is designed to minimizing the impact of a disruption to our customers, employees, infrastructure, and business operations. We accomplish this by focusing on identifying critical functions, infrastructure and risks, implementing strategies to minimize the risk of a disruption, and developing Business Continuity and Disaster Recovery plans/ Crisis Management Teams to recover operations in the event of a disruption.



Virtua

Wakefern Food Corp From a small, local cooperative that began with eight grocery store owners, Wakefern Food Corp. has grown into the largest retailer-owned cooperative in the United States. Founded in 1946, the cooperative comprises 50 members who today independently own and operate 354 supermarkets under the ShopRite, The Fresh Grocer, Price Rite Marketplace and Dearborn Market banners in New Jersey, New York, Connecticut, Pennsylvania, Maryland, Delaware, Massachusetts, Rhode Island, New Hampshire and Virginia. Together with its member companies, Wakefern employs more than 70,000 people, and is one of the largest employers in New Jersey. For more information, please visit www.wakefern.com.



Warshauer Electric Supply American owned and operated since 1954, has over 60 years of experience as an electrical wholesaler and is currently one of the largest independently owned electrical distributors in the country. We are a full-service supply house offering expertise in lighting design, solar energy systems, home automation and security, shading solutions, generator sales/ rentals & service, commercial lighting, switchgear and lighting energy audits.



Wireless For almost thirty years, Wireless has delivered solutions that Government Agencies and Business Enterprises depend on, helping keep operations safe and connected in moments that matter.



Witt O'Brien's is the world leader in crisis and emergency management. We help protect our clients by preparing for all manner of business disruption. But we're not just desk-bound consultants. If disaster does strike, we deploy in a matter of hours -- to help you manage live emergencies in the field, and then to recover as quickly as possible. With decades of front-line experience in both the public and private sectors, we are your force-multiplier for containing the crises that can put you out of business. To learn more about our real-world experience and innovative solutions, please visit us at wittobriens.com.



Zoll



www.responsegroupinc.com

Tel. 281.880.5000 (24/7)



Incident Action Plan Software
INCIDENT MANAGEMENT

VISIT US AT BOOTH #208

The right technology to respond faster.



Verizon helps provide innovative advanced communication solutions that facilitate interoperability, so your department can exchange critical information with other public safety agencies and organizations and access the data they need, when they need it.

Event Details

Visit Verizon at Booths #223 – 227

“Verizon Wireless / Mutualink: Partners when every second counts.”

Wednesday, May 1st

9 – 10:15 AM

Verizon Solutions for Public Safety

Start making a difference for your department.

Visit: http://aboutus.verizonwireless.com/Business_Continuity/Overview.html

- Interoperability
- Disaster Recovery
- Telematics
- Monitoring & Control
- Mobile Public Safety

With a suite of public safety solutions and the security and reliability of America's largest, most reliable 4G LTE network, Verizon helps your department protect and serve more effectively than ever before.

verizon^v