

**WIV 20
23**

SAN LUIS OBISPO COAST AVA



San Luis Obispo Coast

California's coolest AVA



Our Panel

- Brian Talley, - Owner, Talley Vineyards
- Nicole Bertotti-Pope - Owner, Winemaker Haliotide Wines
- John Niven - Owner, Cadre Wines
- Brianne Engles - Winemaker, Chamisal Vineyards
- Aaron Jackson - Owner, Winemaker Aaron Wines/Aequorea Vineyards

Housekeeping

Wines have all been pre-poured.
Taste as you want.

Please hold questions until the end.
Each panelist will present their wines,
then we'll have more of a roundtable,
Q&A at the end.

SAN LUIS OBISPO COAST AVA



A large orange circle on the left side of the slide, partially cut off by the edge.

San Luis Obispo Coast Highlights

Approved, March 9, 2022 by the Tax and Trade Bureau (TTB). Both names San Luis Obispo Coast and SLO Coast are authorized for use on the label.

Consists of 480,585 acres with nearly 4000 acres of winegrapes planted. Chardonnay and Pinot Noir predominant.

More than 50 wineries in the region.

Arroyo Grande Valley and Edna Valley are sub AVAs of the SLO Coast.

A series of four yellow curved dashes in the bottom right corner of the slide.

A large orange circle on the left side of the slide, partially cut off by the edge.

San Luis Obispo Coast Highlights

The SLO Coast is roughly 65 miles long and on average less than 10 miles wide. It is bounded by the Pacific Ocean to the west and the Santa Lucia Mountains to the east.

97% of the vineyards are planted within 6 miles of the ocean, generally at an elevation of less than 500 feet.

With an average heat summation of 2493 degree days, it is recognized as the coolest AVA in CA.

Four yellow curved lines of varying lengths and orientations, located in the bottom right corner of the slide.

A large orange circle is positioned on the left side of the slide, partially cut off by the edge.

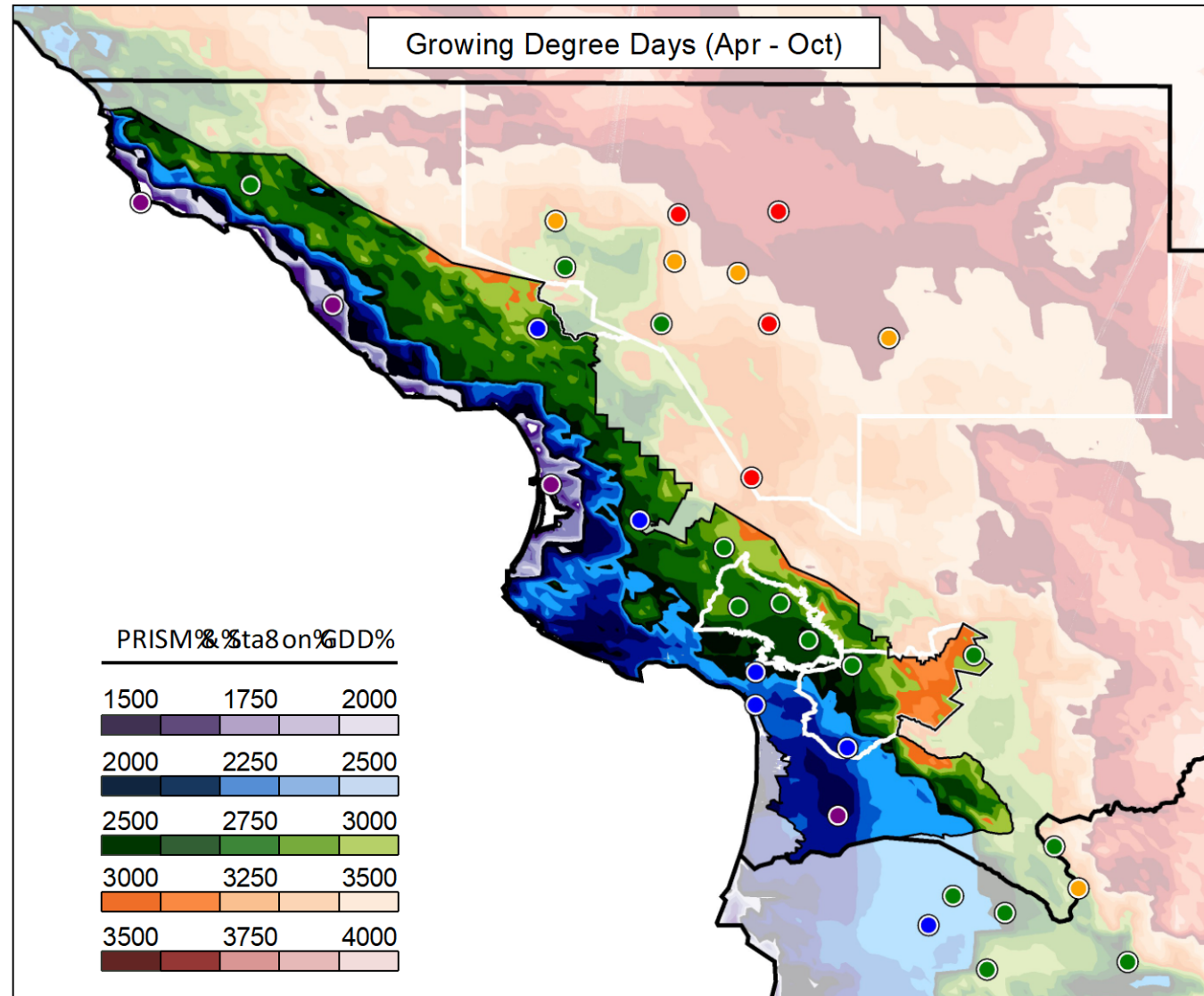
San Luis Obispo Coast Technical Details

Before we get to the tasting, I'd like to turn it over to Aaron Jackson who was responsible for much of the work to get the AVA approved. Aaron will briefly discuss climate and geology of the SLO Coast region.

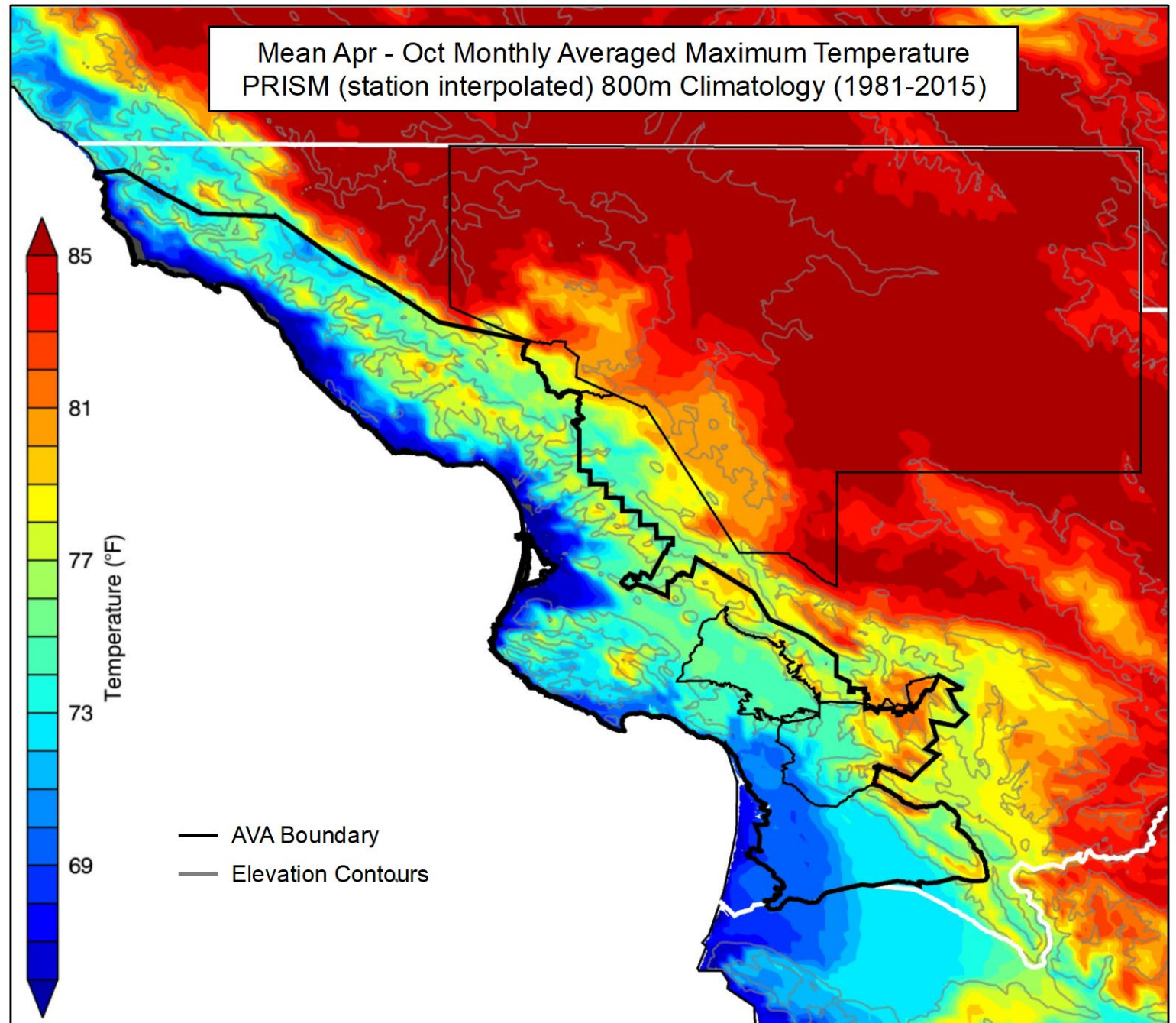


For creating the boundaries of the AVA, climate data was collected from 28 weather stations to look at GDD, minimum & maximum temps, fog intrusion, etc.

Wind data and modeling was also used to further determine coastal climate influence.



Minimum & maximum daytime temperatures are most strongly influenced by coastal proximity & the Santa Lucia Mountain Range's ability in impact ocean influence and cool coastal air intrusion.

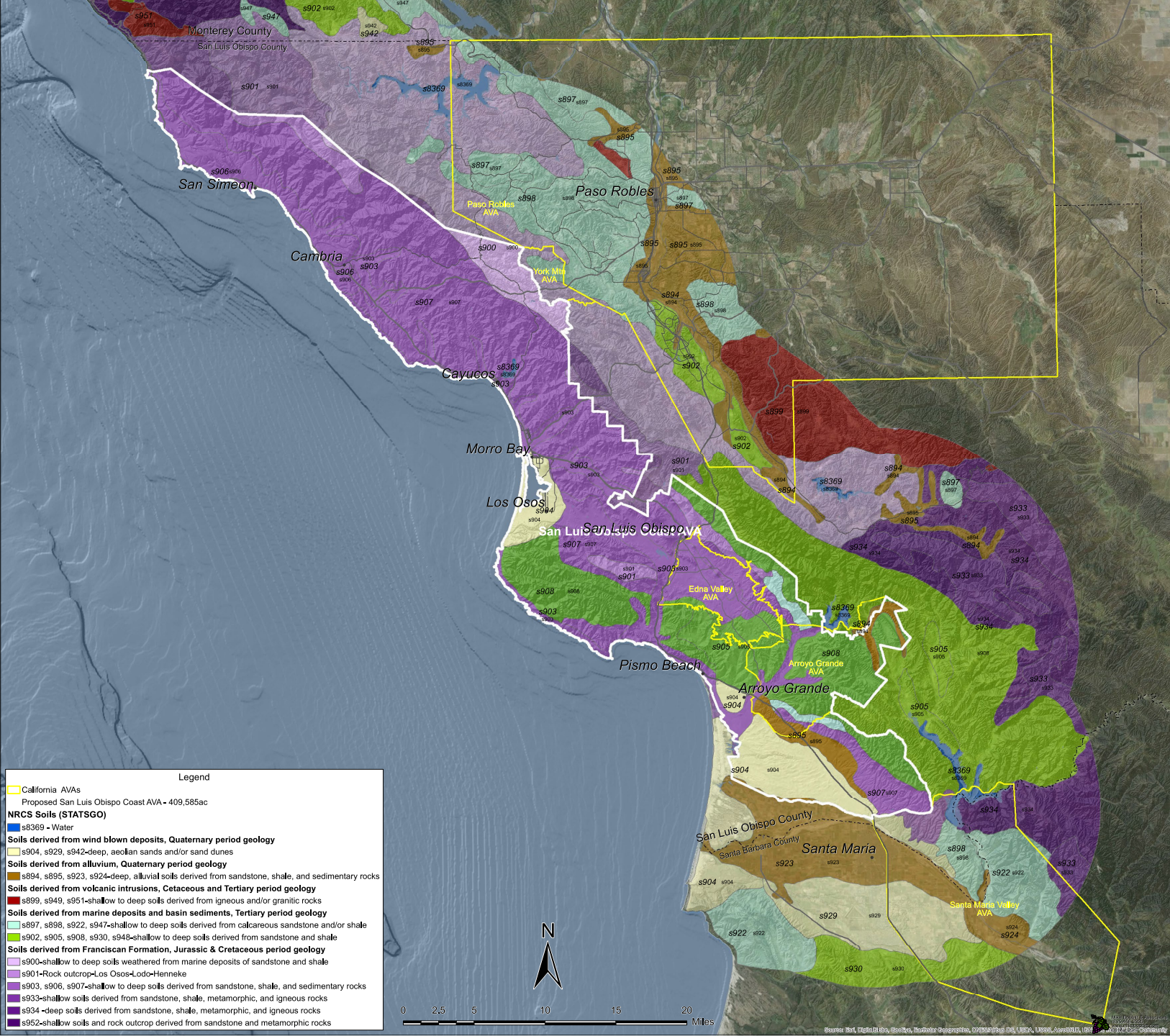


Generally, the geological profile of the SLO Coast is broken up to three distinct types

Older, Franciscan formation geology

Younger Monterey formation geology (similar to Paso)

Very young alluvial deposits (sandy soils in Nipomo area)






San Luis Obispo Coast AVA

Haliotide

2017 Blanc de Blancs, Stolo Vineyards,
San Luis Obispo Coast AVA

2018 Extra Brut Rose, Topotera Vineyard,
San Luis Obispo Coast AVA



Cadre

2021 Sea Queen
Albarino, Edna Valley AVA

2021 Band of Stones
Gruener Veltiner, Edna Valley





RÍAS BAIXAS



EDNA VALLEY

O ROSAL SUBZONE OF THE RIAS BAIXAS



EDNA VALLEY



Talley Vineyards

Talley Vineyards 2021
Estate Chardonnay,
San Luis Obispo Coast AVA

Talley Vineyards 2021
Estate Pinot Noir,
San Luis Obispo Coast AVA



SAN LUIS OBISPO COAST AVA



CHAMISAL

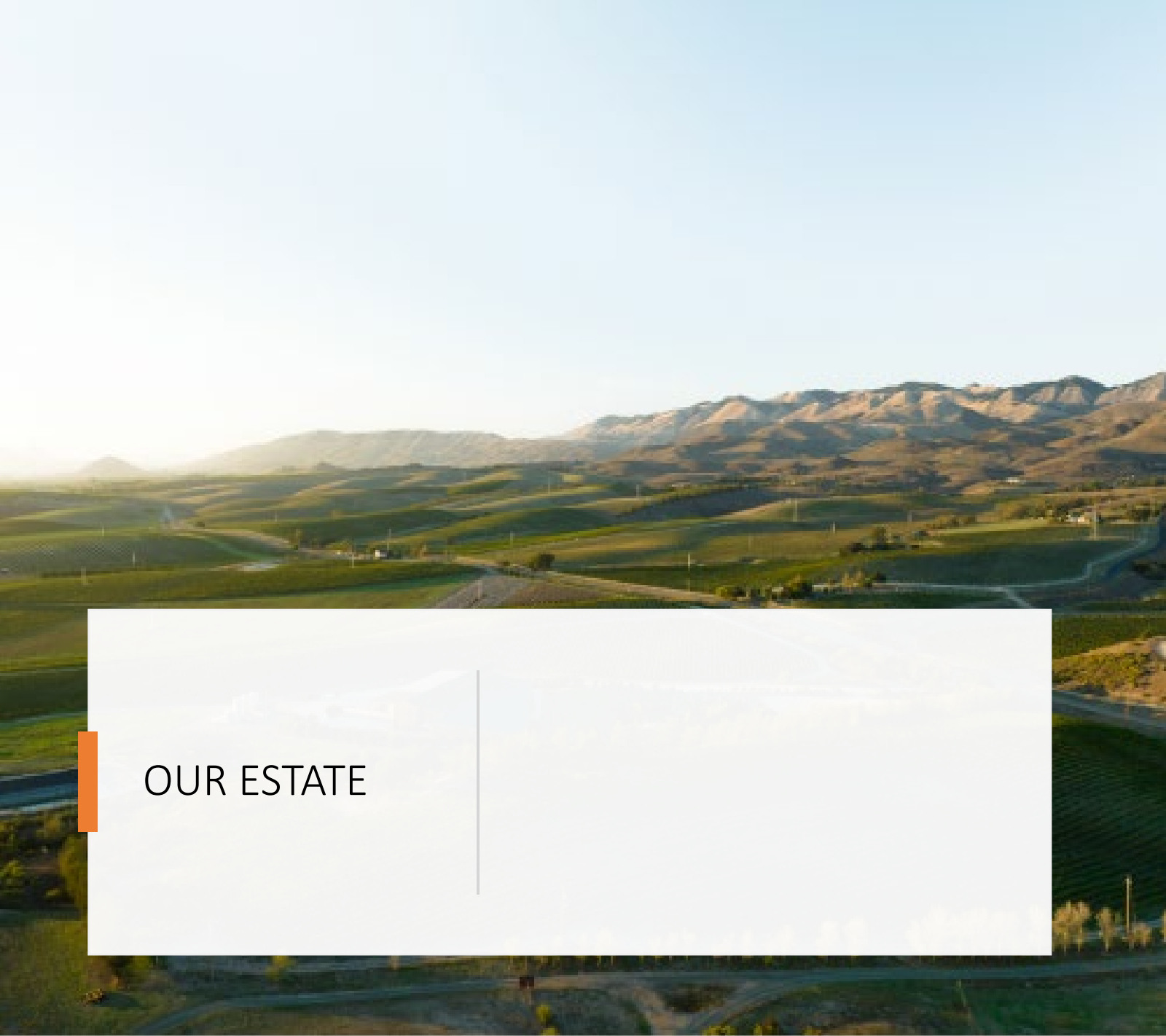
VINEYARDS

2021 Chamise Chardonnay

2020 Chamisal Estate Pinot Noir



EST. 1973



OUR ESTATE





OUR SOILS



San Luis Obispo Coast AVA

2021 Aequorea Pinot Noir, Seafarer

- A blend of Spanish Springs, Greengate, Rincon, Derbyshire
- Lighter sandy loam soils at Spanish Springs & Derbyshire
- Heavier calcareous clay soils from Greengate & Rincon
- Predominately clone 2A, very small amounts 115, 667
- Aged for 10 months in 10% new French oak
- Small amount whole cluster or stem inclusion (10%)

San Luis Obispo Coast AVA

2021 Aequorea Pinot Noir, Spanish Springs Vineyard

- Grown 2 miles from the Pacific in Pismo Beach
- Sandy loam and shale soils
- Clones 667, 2A, 943
- Aged 10 months in 60% new French oak
- Small amounts of stem inclusion (no whole cluster)