



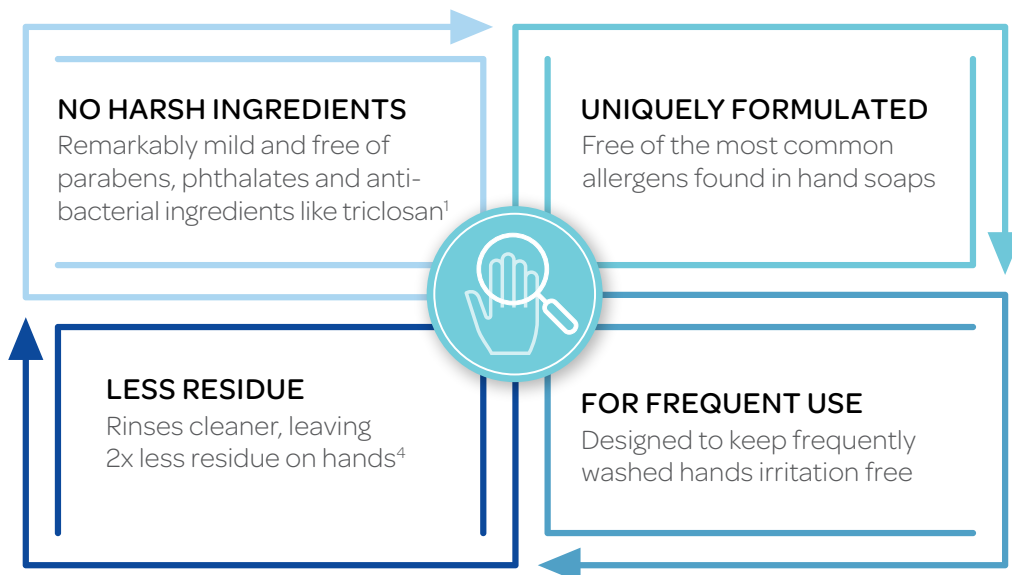
Healthy Hands are Cleaner Hands

PURELL® Healthcare CRT HEALTHY SOAP® High Performance Foam

Maintaining healthy skin is critical for healthcare workers, as healthy skin is cleaner skin. Our revolutionary new soap, PURELL® Healthcare CRT HEALTHY SOAP® High Performance Foam, sets a new standard for soap performance. CRT® High Performance Soap removes more than 99% of biofilm and germs, without the use of the two most common skin irritants – antimicrobials¹ and preservatives.^{2,3}



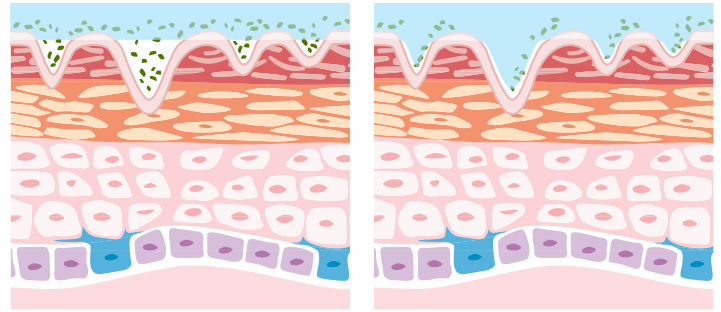
Comprehensive Skin Health



Enhanced Soap Performance

Designed to optimize cleaning power, CLEAN RELEASE® Technology cleans deeper. Here's how:

- **2X Lower** – CLEAN RELEASE® Technology lowers the soap's interfacial tension⁵, improving its ability to spread at the skin's topography, allowing it to **better remove soils & germs**.
- **Better Wash Experience** – **95% preferred** over regular soap⁶
- **Water Conservation** – Saves an average of 15,000 gallons per year in a 500-bed hospital⁷



Regular Soap⁸

Higher interfacial tension prevents regular soap from reaching into crevices where soil and germs may hide.

High Performance HEALTHY SOAP⁹

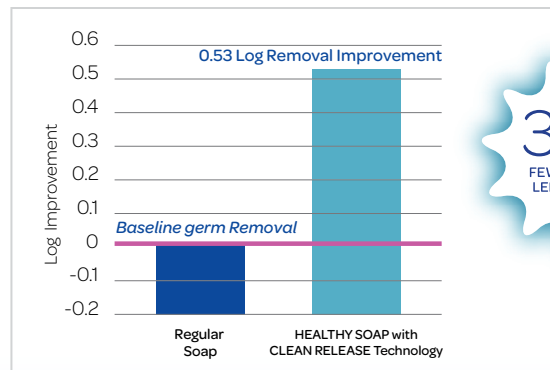
CLEAN RELEASE® Technology with 2X lower interfacial tension lifts and washes away more than 99% of soil and germs.^{2,3,5}

Soap that Works Better

CLEAN RELEASE® Technology helps soap work better and remove more than 99% of soil & germs.


- **3.4X Fewer Germs** – CRT® High Performance Soap lifts & washes away germs better than regular soap^{3,9}
- **31% Better Cleaning** – Removes **31% more biosoil** than regular soap²

Germ Removal on Dry, Irritated Skin



A 0.53 log removal improvement on dry, irritated skin compared to regular soap.¹⁰

Washing with soap and water is one of the most important steps to prevent the spread of germs.

Hand Soap	ES4 1200 mL	ES6 1200 mL	ES8 1200 mL	Bottles 535 mL	ADX™ 1200 mL	LTX™ 1200 mL
PURELL® Soap Dispenser – White	5030-01	6430-01	7730-01	–	8871-06	1971-04
PURELL® Soap Dispenser – Graphite	5034-01	6434-01	7734-01	–	8872-06	1972-04
PURELL® Healthcare CRT HEALTHY SOAP® High Performance Foam	 5085-02	6485-02	7785-02	5775-04	8870-03	1970-02

1. Does not contain an antibacterial soap active ingredient. | 2. Augustine Scientific, Newbury OH, *ex vivo* Soil Removal Analysis, August 5, 2017. | 3. BioScience Laboratories, Inc.; Bozeman, MT, Study# 170398-101, Evaluation of *in vivo* Germ Removal, July 5, 2017. | 4. Compared to a top selling competitive foam soap. Skin Care Learning Center Study #2018-05-10656. | 5. Augustine Scientific, Newbury OH, Surface and Interfacial Rheology Analysis, June 30, 2017. | 6. GOJO Industries Inc, Study 2017-08-110608 Healthy Soap CRT Foam and Lather Study August 2017. | 7. GOJO Industries, Inc., 2017-07-110599 PURELL Healthy Soap CRT Rinse and Sustainability Study, 19 July 2017. | 8. All references to regular soap are based on our top-selling non-antibacterial soap. | 9. BioScience Laboratories, Inc.; Bozeman, MT, Study# 1707304-101, Evaluation of *in vivo* Germ Removal, August 22, 2017. | 10. GOJO Industries Inc, Akron OH, Evaluation of handwashes for germ removal from *ex vivo* skin, Study #EV-2017-002, August 15, 2017.

HCE-LIT-CRT | 26597 (2/2019)



GOJO Industries, Inc.
One GOJO Plaza, Suite 500
P.O. Box 991 • Akron, OH 44309-0991
Tel: 1-330-255-6000 • Toll-free: 1-800-321-9647
Fax: 1-800-FAX-GOJO

© 2019 GOJO Industries, Inc. All rights reserved.

To learn more, visit
www.PURELLSOLUTION.com

