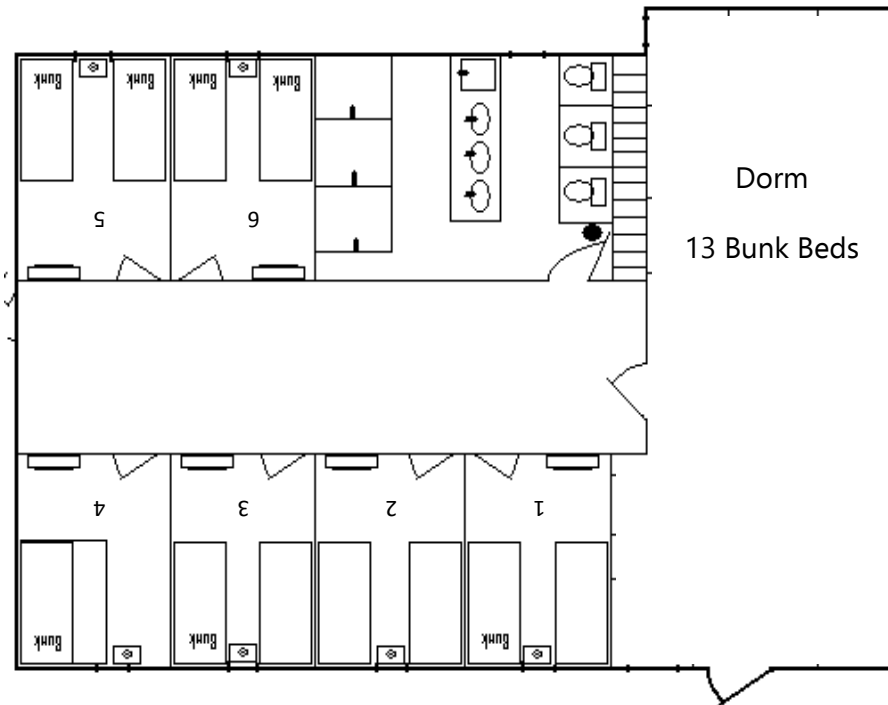
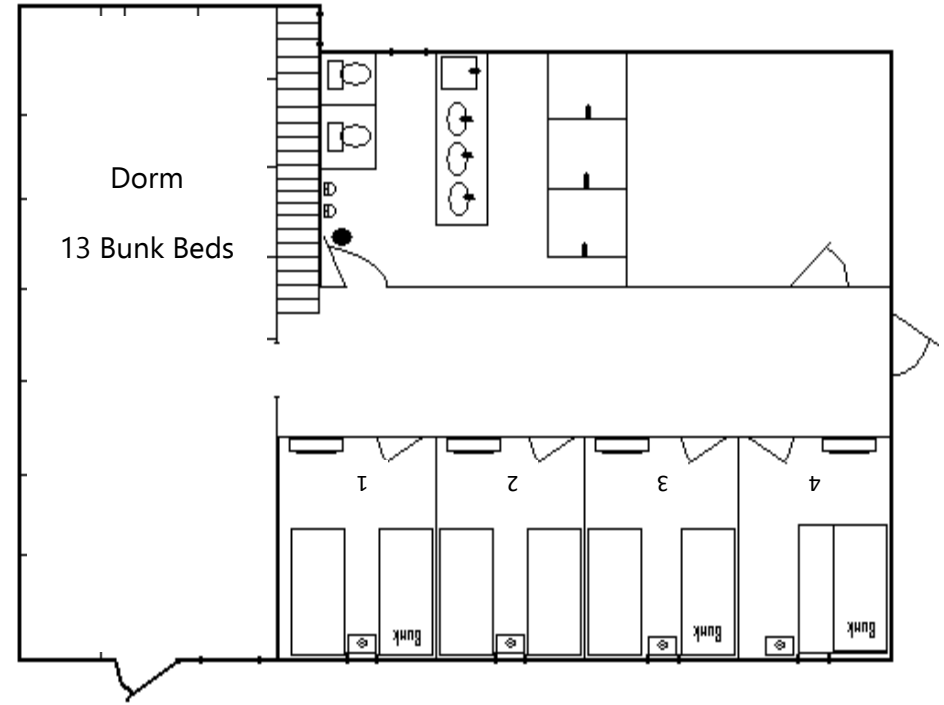


Sutliff Lodge



- Room 1: 1 bunk, 1 single
- Room 2: 2 singles
- Room 3: 1 bunk, 1 single
- Room 4: 1 full with single bunk
- Room 5: 2 bunks
- Room 6: 2 bunks
- Dorm: 13 bunks



- Room 1: 1 bunk, 1 single
- Room 2: 2 singles
- Room 3: 1 bunk, 1 single
- Room 4: 1 full with single bunk
- Dorm: 13 bunks

Sutliff Lodge



Sutliff Lodge, Boy's Side Dorm
(pictured left):

This room features 13 bunk beds on the basement level of Sutliff Lodge. Room can be accessed through walk-out basement doors or by a set of stairs from the top level of the building.

Sutliff Lodge, Boy's Side Room 1
(pictured right):

This room features 1 single bed and 1 bunk bed on the basement level of Sutliff Lodge. Room can be accessed through walk-out basement doors or by a set of stairs from the top level of the building and is directly across from a bathroom.



Sutliff Lodge, Boy's Side Room 2
(pictured left):

This room features 2 single beds on the basement level of Sutliff Lodge. Room can be accessed through walk-out basement doors or by a set of stairs from the top level.



Please Note: The 'girls' side and 'boys' side rooms have two entirely different stairwells to get to the rooms and cannot be reached from one side to the other. We label the sides this way for our school groups however adult groups are welcome to use the rooms as they see fit.

Sutliff Lodge, Boy's Side Room 3
(pictured right):

This room features 1 single bed and 1 bunk bed on the basement level of Sutliff Lodge. Room can be accessed through walk-out basement doors or by a set of stairs from the top level of the building.



Sutliff Lodge, Boy's Side Room 4
(pictured left):

This room features 1 full bed with a single bunk above on the basement level of Sutliff Lodge. Room can be accessed through walk-out basement doors or by a set of stairs from the top level of the building.



Sutliff Lodge, Girl's Side Dorm
(pictured left):

This room features 13 bunk beds on the basement level of Sutliff Lodge. Room can be accessed through walk-out basement doors or by a set of stairs from the top level of the building.



Please Note: The 'girls' side and 'boys' side rooms have two entirely different stairwells to get to the rooms and cannot be reached from one side to the other. We label the sides this way for our school groups however adult groups are welcome to use the rooms as they see fit.



Sutliff Lodge, Girl's Side Room 1
(pictured left):

This room features 1 single bed and 1 bunk bed on the basement level of Sutliff Lodge. Room can be accessed through walk-out basement doors or by a set of stairs from the top level of the building and is directly across from a bathroom.

Sutliff Lodge, Girl's Side Room 2
(pictured right):

This room features 2 single beds on the basement level of Sutliff Lodge. Room can be accessed through walk-out basement doors or by a set of stairs from the top level.



Sutliff Lodge, Girl's Side Room 3
(pictured right):

This room features 1 single bed and 1 bunk bed on the basement level of Sutliff Lodge. Room can be accessed through walk-out basement doors or by a set of stairs from the top level of the building.

Please Note: The 'girls' side and 'boys' side rooms have two entirely different stairwells to get to the rooms and cannot be reached from one side to the other. We label the sides this way for our school groups however adult groups are welcome to use the rooms as they see fit.

Sutliff Lodge, Girl's Side Room 4
(pictured right):

This room features 1 full bed with a single bunk above on the basement level of Sutliff Lodge. Room can be accessed through walk-out basement doors or by a set of stairs from the top level of the building.



Sutliff Lodge, Girl's Side Room 5
(pictured left):

This room features 2 bunk beds on the basement level of Sutliff Lodge. Room can be accessed through walk-out basement doors or by a set of stairs from the top level of the building.



Sutliff Lodge, Girl's Side Room 6
(pictured right):

This room features 2 bunk beds on the basement level of Sutliff Lodge. Room can be accessed through walk-out basement doors or by a set of stairs from the top level of the building.

