

The Promise of Continuum of Care Reform (CCR)

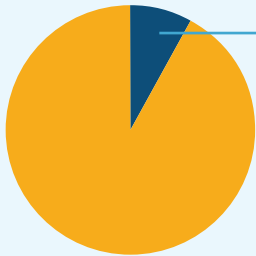
All children will live with a committed, permanent and nurturing family.



FACTS ABOUT CONGREGATE CARE

64,196

Children and Youth
in Foster Care



5,125

in congregate care
(group homes)

Congregate Care = Greater Challenges

PERMANENCY

These youth are more likely to have multiple placements, difficulty with reunifying and often re-enter foster care.

EDUCATION

14% of youth in congregate care drop out from high school - compared to 4% of foster children not placed in congregate care.

JUVENILE JUSTICE

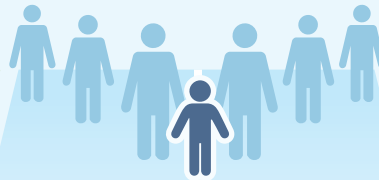
Youth in congregate care are more likely to have juvenile justice involvement.

Many of these young people in congregate care have needs which could be better addressed in loving, resourced and supportive home-based settings. This is the promise of CCR.

TRANSFORMATION TO TRAUMA-INFORMED FAMILY-BASED CARE

The Starting Point: Children and Family Teams (CFTs) Lead the Way

Child Welfare in all counties use CFTs to drive **placement decisions**, **case planning**, and **care coordination**.



PLACEMENT

Child Welfare is aiming to match each child/youth to a home-based caregiver who can meet their needs. Caregivers, legally prioritized for adoption, will have access to training, services, supports and funding from various agencies to enable them to care for children/youth in the least restrictive setting.

CASE PLANNING

All agencies involved in supporting the child and family; child welfare, mental health, probation, education and the judiciary, coordinate to provide timely, culturally and linguistically appropriate trauma-informed services.

CARE COORDINATION

The resource parent (caregiver), children and families will receive integrated, coordinated support and services in home-based settings whenever possible. Limited and short term use of residentially based services.

CFTs are built to listen to and prioritize the "youth voice."

VISION



Children shouldn't have to move to access needed services. All systems share responsibility for youth and families.



Children and youth living with supportive families who have access to timely, relevant training, resources and a team of support.



Better outcomes for children, youth and families.

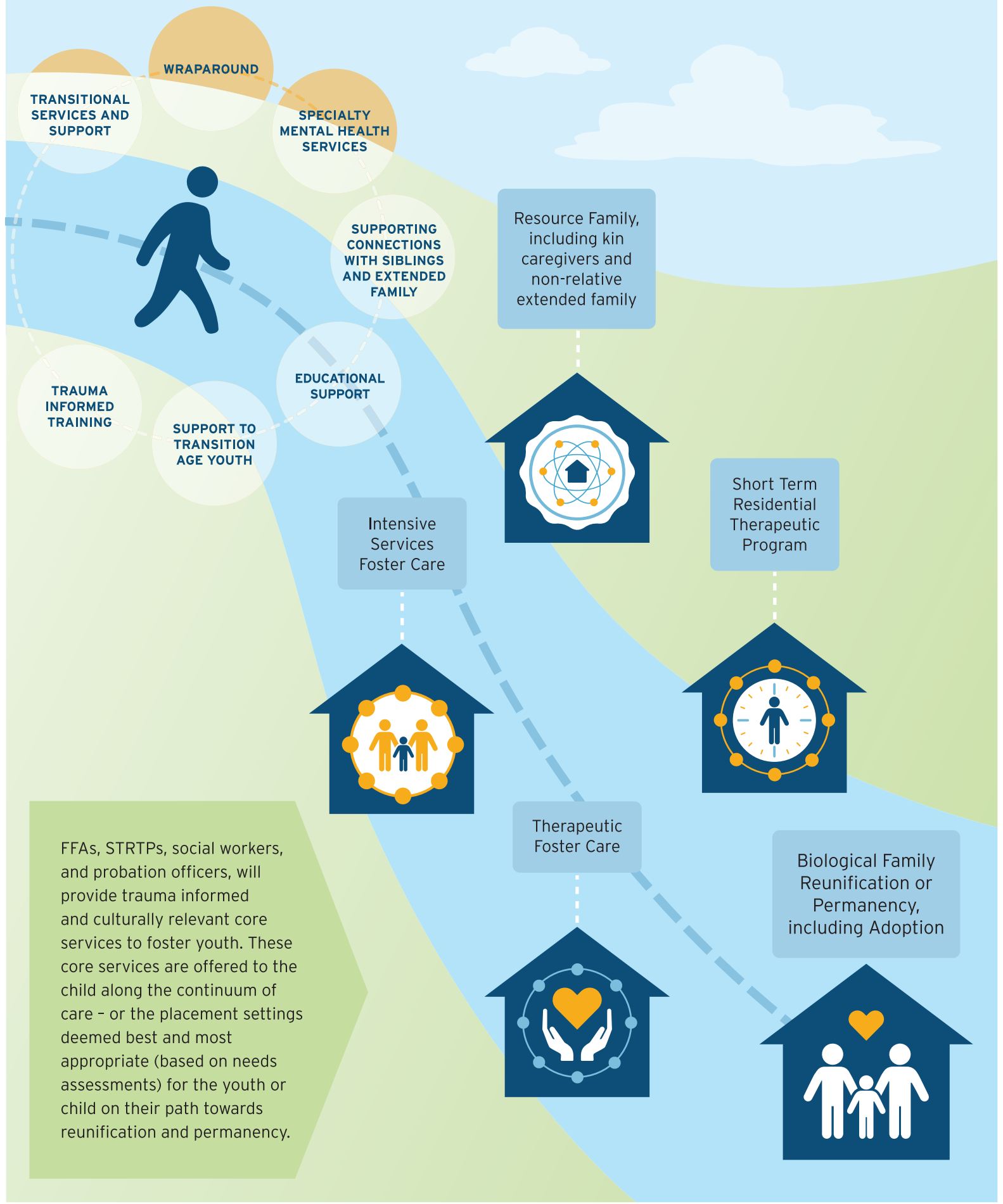
CCR is re-inventing recruitment of resource families and re-defining their role as a team member in meeting the needs of the child.



Higher levels of care, such as group homes, will only be for a specific period of time, as an intervention, not a placement.



The Continuum of Care Reform (CCR)



FFAs, STRTPs, social workers, and probation officers, will provide trauma informed and culturally relevant core services to foster youth. These core services are offered to the child along the continuum of care - or the placement settings deemed best and most appropriate (based on needs assessments) for the youth or child on their path towards reunification and permanency.