

MOVING FORWARD **TOGETHER**



62nd Annual

**Cooperative Conference for
School Administrators**

Sunday, July 30

- 3:00 – 7:00 Registration Open (Lobby)
4:30 – 5:30 Commissioner's Advisory Council
(Marbella - by invitation)
5:30 – 6:30 Networking Reception /
New Superintendent Welcome
(Seachase)

Monday, July 31

Morning

- 6:30 – 11:30 Registration Open (Campana Hall)
7:00 – 7:45 Breakfast Buffet (Campana Hall)
8:00 – 9:15 Opening General Session / Keynote
(Campana Hall)
9:30 – 10:20 Breakout Sessions
10:30 – 11:20 Breakout Sessions
11:30 – 12:20 Breakout Sessions

Afternoon

- 12:30 – 1:45 Pioneer Recognition Luncheon
(Campana Hall)
2:00 – 2:50 Breakout Sessions
3:00 – 3:50 Breakout Sessions
Dinner on Your Own

Tuesday, August 1

- 7:15 – 8:00 Breakfast Buffet (Campana Hall)
8:15 – 11:00 Closing General Session (Campana Hall)
 - Governor Parson
 - Finance Update
 - Commissioner Vandeven

KEYNOTE SPEAKER

Michelle Gielan • Monday, July 31

Positive Leadership:

Creating a Mindset that Fuels Success and Happiness in Education



We are experiencing the highest levels of stress and anxiety in recorded history. The antidote: building an optimistic, resilient mindset. Research from the fields of neuroscience and positive psychology shows the incredible ripple effect rational optimism can have on performance and happiness at work and in school.

Drawing from more than a decade of her research on the connection between optimism and success, and her work with schools nationwide, Michelle Gielan has developed simple, yet proven techniques for strengthening and communicating an optimistic mindset to fuel well-being and educational outcomes. She shares case studies from her work on how school communities built a positive culture that significantly improved educator and student well-being, decreased mental health emergency calls by 50%, improved grades and test scores, and led the districts from debt to a multimillion-dollar surplus.

Michelle helps educators and parents leverage the benefits of this research in their own lives, as well as showing them how to make optimism contagious to students.

Biography

MICHELLE GIELAN is the bestselling author of *Broadcasting Happiness: The Science of Igniting and Sustaining Positive Change* and was named one of the Top 10 authors on resilience by the Harvard Business Review. She is the founder of the Institute for Applied Positive Research and holds a Master of Applied Positive Psychology from the University of Pennsylvania.

Michelle is an Executive Producer of "The Happiness Advantage" on PBS and a featured professor in Oprah's Happiness course. She formerly served as anchor of The CBS Morning News, and her research has received attention from dozens of media outlets including The Washington Post, FORBES, and The New York Times.

Monday, July 31

Luncheon
Remarks



Charles W. Shields
President
State Board of Education

Tuesday, August 1

General Session
Remarks



Michael L. Parson
Governor

Tuesday, August 1

General Session
Remarks



Margie Vandeven
Commissioner of Education

State Board of Education

President

Charles W. Shields

Vice President

Carol Hallquist

Members

Kimberly Bailey

Kerry Casey

Donald Claycomb

Peter F. Herschend

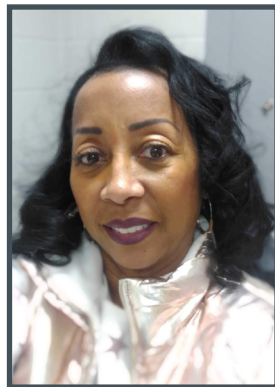
Mary Schrag

Pamela Westbrook-Hodge

2023 MISSOURI PIONEERS IN EDUCATION

First awarded in 1974, Pioneer in Education awards have been presented by the Missouri State Board of Education and the Missouri Department of Elementary and Secondary Education for 48 years. This award honors teachers, school administrators, citizens, and lawmakers for their distinguished careers and contributions to public education in Missouri, either at the state or local level.

In recognition of distinguished and devoted service to public education in Missouri, the honorary title of Missouri Pioneer in Education will be presented to:



**Audrey
Brown-Mitchell**



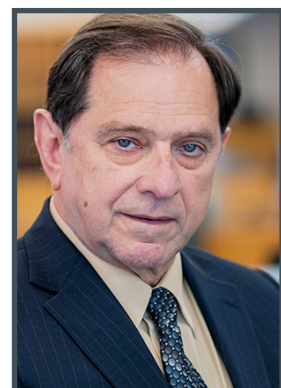
**Maxine
Clark**



**Shirley
Cummins**



**Dr. Roger
Dorson**



**Dr. Bernard J.
Dubray**

MONDAY, JULY 31 • BREAKOUT SESSIONS

Presenters are DESE team members unless otherwise noted.

Early Learning & Early Literacy

Funding High-Quality Preschool Programs

Stephanie Chandler and Meghan Rackers

Do you want to add or expand preschool for students in your district? This session will review the options for funding and the necessary steps to create quality Pre-K programs that will prepare your students for kindergarten.

Kindergarten Entry Assessment (KEA) 101

Stephanie Chandler and Meghan Rackers

Do you want to know how a KEA can improve instructional practices and engage families in their child's learning? Learn how to connect the early learning and kindergarten practices in your district to create a successful transition into kindergarten.

A Deep Dive into Missouri Read, Lead, Exceed

Heather Knight, April Georgetti, and Cassandra Beaty

Learn more about the Read, Lead, Exceed initiative in this session and get the information you need to support the effective implementation of literacy efforts in your district.

LETRS® Training: Why it's Important and How it Supports Students

Heather Knight, Robyn Rogers (Lexia), and Cindy Rodgers (SE RPDC)

Hear how a school leader supporting teacher participation in LETRS® training is imperative to fostering students' literacy success and ensuring Missouri students are able to read at grade level.

Educator Recruitment & Retention

Climate and Culture: The Work of the Blue Ribbon Commission

Paul Katnik

Hear the latest update on the work of the Teacher Recruitment and Retention Blue Ribbon Commission and the group's efforts to positively affect school climate and culture.

Financial & Administrative Services

School Finance, Governance, and Transportation

Tammy Lehmen and David Tramel

Get the latest updates on current issues affecting School Finance, Governance, and Transportation, such as allowable transfers, claiming PK students for state aid, calendar requirements, AMI, tax rate reminders, transportation, residency, and resources available to districts on the issues on the DESE website.

Safe & Healthy Schools

Your Guide to SEL and School-Based Mental Health

Chrissy Bashore, Lisa Dierking, and Mental Health Program Representatives

Let's talk about school-based mental health (SBMH) and social-emotional learning (SEL). Receive the latest updates on current initiatives including SEL standards, SBMH grants, mental health awareness curriculum, Mental Health First Aid, and other collaborative efforts designed to help navigate available resources.

MONDAY, JULY 31 • BREAKOUT SESSIONS

Presenters are DESE team members unless otherwise noted.

Success-Ready Students & Workforce Development

Partnerships for Student Success

Amy Siekerman and Kristin Donze

Explore ways that Vocational Rehabilitation (VR) partners with schools, agencies, the University of Missouri, and others to assist students in transitioning into college and future employment. Explore the various Pre-Employment Transition Services and VR programs available while hearing examples of great partnerships and student success.

Seeing Invisible Students

Misty Dothage

Families experiencing homelessness are often hard to identify and frequently want to remain that way, but students experiencing homelessness need to be seen, heard, served, and educated. Learn about the basics of the McKinney-Vento Act, the impact on students, the roles of state and local officials, and best practices.

The Wheel of Federal Funding

Stacy Hamlett and Lesley Turek

Learn how to spend federal funding in an effective and efficient manner to support your various student populations. This session will cover topics such as matching budgets to plans, possible allowable uses, and best practices when using federal funding.

Competency-Based Education (CBE)

Stuart Smith, Jeremy Tucker (Liberty Public Schools), and Jenny Ulrich (Lonedell R-XIV)

Learn about all things CBE: the CBE Task Force, the CBE Grant Program, and the work of the Success Ready Students Network.

Continuous Improvement Panel Discussion

DESE School Improvement Staff and District Leaders

This panel of school leaders will share how to use continuous improvement and other features of the Missouri School Improvement Program to drive positive change in your district.

State Assessment and Accountability

Shaun Bates and Jocelyn Strand

Hear about updates to the Missouri Assessment Program and the Missouri School Improvement Program for the 2023-24 school year and beyond.

Making Sure You're Online with MOCAP Updates

Marlie Williams

Learn about the changes to MOCAP based on the amended Administrative Rule for HB 1552 (2022) and how that impacts school and district practices.

Adult Education and Literacy: Building Communities of Support

Megan Wadley, David Pershing (MO Dept. of Corrections), and DESE AEL/HSE Staff

The Missouri High School Equivalency (HSE) program provides an excellent opportunity to assist students as they continue their path to success. Hear from state leaders on the benefits of the HSE and Adult Education & Literacy (AEL) programs while learning first-hand about the HSE updates for the next three years.

Registered Teacher and Youth Apprenticeship Training Programs

Perry Gorrell, Daryl Fridley, Reesha Adamson (Missouri State), and Betty Glasgow (Missouri State/SW RPDC)

Registered Apprenticeships can help address two pressing problems administrators face: engaging students and recruiting teachers. Hear how these training programs involve students in activities that prepare them for future successes, and can also be used to expose students and fellow school personnel to the teaching profession.

MONDAY, JULY 31 • BREAKOUT SESSIONS

Sessions will be available at the breakout times noted below. Several sessions are repeated once, but not all.

Meeting Room	9:30 a.m.	10:30 a.m.	11:30 a.m.	2:00 p.m.	3:00 p.m.
Granada A/B	School Finance, Governance, and Transportation	Funding High-Quality Preschool Programs	State Assessment and Accountability	School Finance, Governance, and Transportation	Funding High-Quality Preschool Programs
Granada C	Kindergarten Entry Assessment (KEA) 101	Your Guide to SEL and School-Based Mental Health	Your Guide to SEL and School-Based Mental Health	State Assessment and Accountability	Climate and Culture: The Work of the Blue Ribbon Commission
Marbella A/B	A Deep Dive into Missouri Read, Lead, Exceed	LETRS® Training: Why it's Important and How it Supports Students	Climate and Culture: The Work of the Blue Ribbon Commission	A Deep Dive into Missouri Read, Lead, Exceed	
Valencia A	Registered Teacher and Youth Apprenticeship Training Programs	Competency-Based Education	Competency-Based Education	Partnerships for Students Success	Adult Education and Literacy: Building Communities of Support
Valencia B	Continuous Improvement Panel Discussion	Continuous Improvement Panel Discussion	Making Sure You're Online with MOCAP Updates	Wheel of Federal Funding	Seeing Invisible Students



Download the app!
dese.mo.gov/moed23



Join the conversation on Twitter!
[#MoED23](https://twitter.com/MoED23)

