

CENTRAL COAST

Insights

CENTRAL COAST
Insights

SGMA and its Economic & Regulatory
Challenges in Santa Barbara County

-

Kevin Merrill

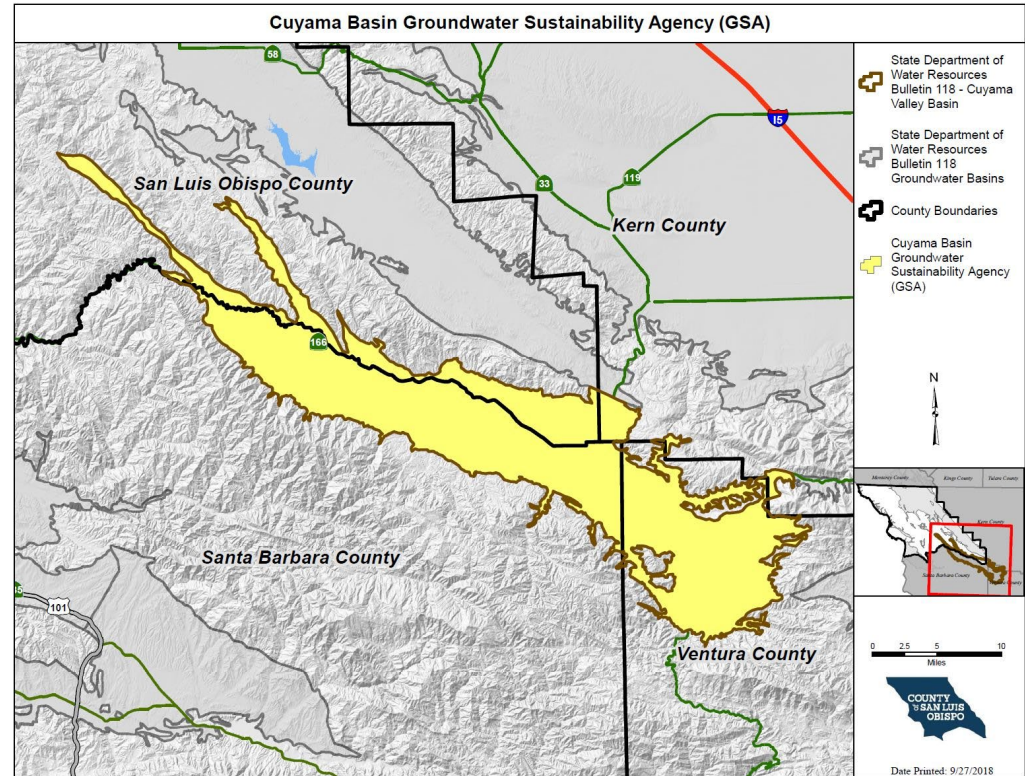
Mesa Vineyard Management

SGMA in Santa Barbara County

- Basin classifications:
 - Carpinteria – High priority
 - Cuyama – High priority
 - Montecito – Medium priority
 - San Antonio – Medium priority
 - Santa Ynez – Medium priority
- There are roughly 20,000 acres of wine grapes in SB County
 - About 70% of wine grapes are grown within the Cuyama, San Antonio, and Santa Ynez basins

Cuyama Basin

- High priority/Designated critically overdrafted
- Pending adjudication
- Groundwater extraction fee = \$38 per acre foot as of May 2022
 - De minimis pumpers are exempt (< 2 acre feet)

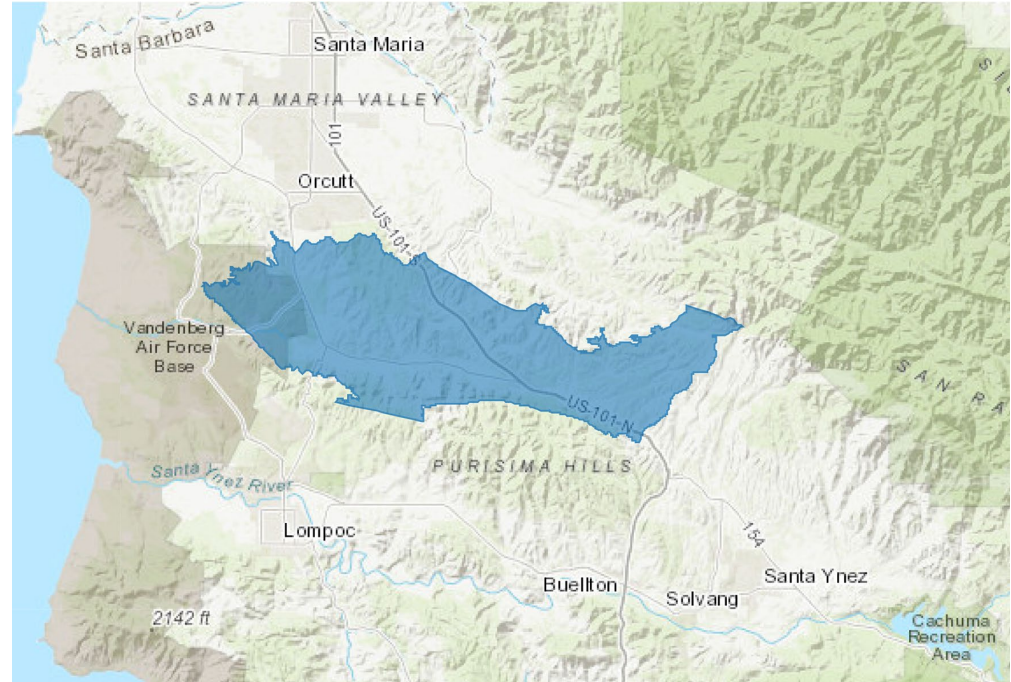


Cuyama GSA Board

- **Derek Yurosek** Chairperson, Cuyama Basin Water District
- **Vacant** Vice Chairperson, Cuyama Community Services District
- **Byron Albano** Cuyama Basin Water District
- **Cory Bantilan** Santa Barbara County Water Agency
- **Jimmy Paulding** County of San Luis Obispo
- **Zack Scrivner** County of Kern
- **Arne Anselm** County of Ventura
- **Rick Burnes** Cuyama Basin Water District
- **Matt Vickery** Cuyama Basin Water District
- **Das Williams** Santa Barbara County Water Agency
- **Jane Wooster** Cuyama Basin Water District

San Antonio Basin

- Medium priority
- The current Assessment values are:
 - Irrigated Land - \$60.00 per acre
 - Non-Irrigated Land - \$0.50 per acre
 - Non-Overlying Land - \$0.00 per acre
 - Minimum Assessment - \$50.00



San Antonio GSA Board

Board Members:

- **Randy Sharer, 2023 Chair** – Row Crops
- **Tom Durant, 2023 Vice Chair** – Permanent Crops
- **Dan Chabot** – Cattle
- **Juan Gomez** – LACSD Rep.
- **Kevin Merrill** – Vineyard
- **Patrice Mosby** – Vineyard
- **Kenny Pata** – Row Crops
- **Chris Wrather** – Transitional Land Use

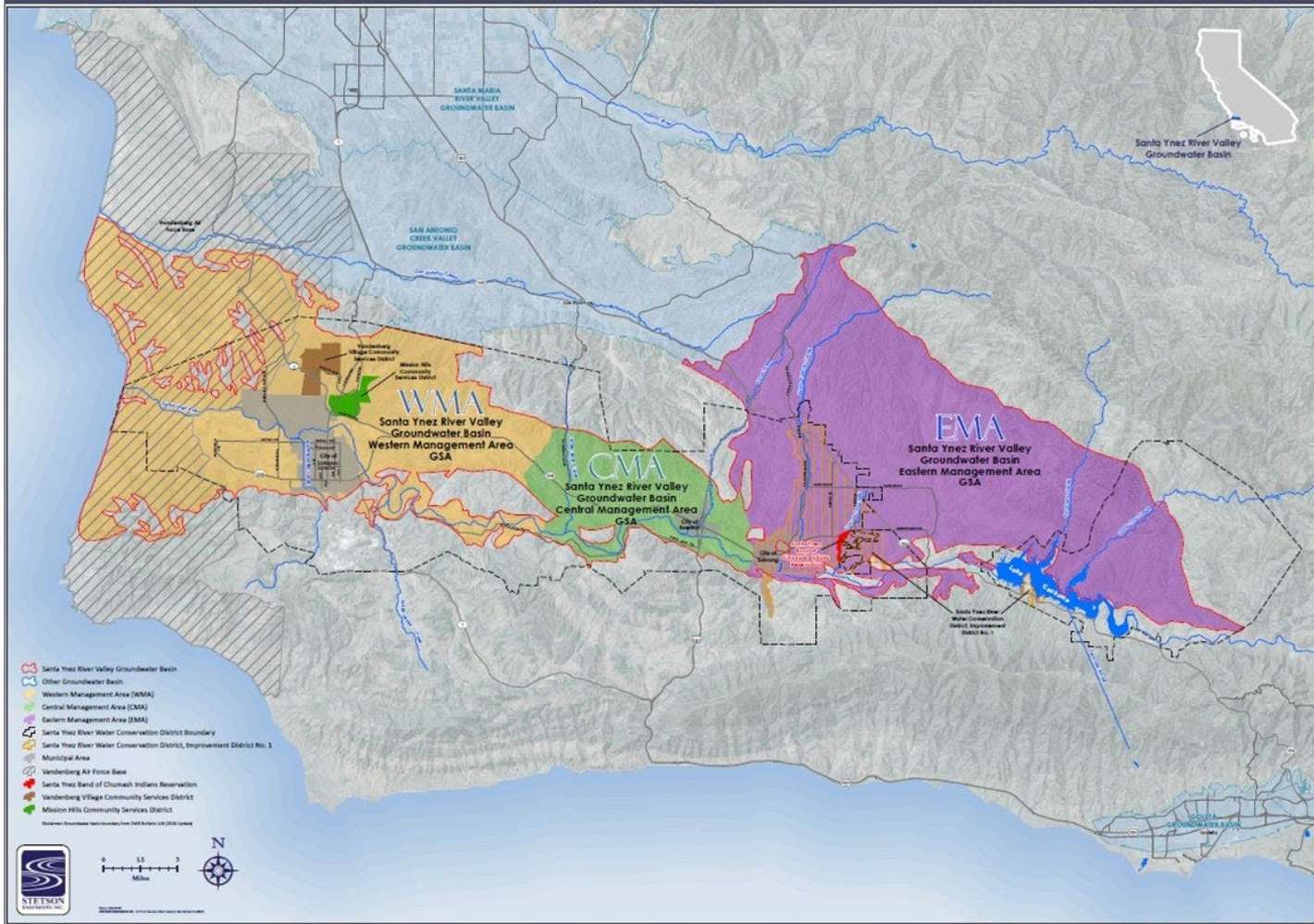
Alternates:

- **Bart Haycraft** – Vineyard
- **Richard Kline** – Cattle
- **Eric Pooler** – Row Crops
- **Jim Stollberg** – Permanent Crops
- **Marvin Teixeira** – Transitional Land Use
- **Brad Vidro** – LACSD Rep.

Santa Ynez River Valley Basin

- Medium priority
- Three GSAs manage the basin
 - Western Management Area (WMA)
 - Central Management Area (CMA)
 - Eastern Management Area (EMA)
- Funded to date by grants and public agencies
 - Such as Santa Ynez River Water Conservation Districts, City of Buellton, City of Solvang, City of Lompoc, County of Santa Barbara, etc.

SANTA YNEZ RIVER VALLEY GROUNDWATER BASIN SGMA GSA MANAGEMENT AREAS



WMA GSA Board

- **City of Lompoc**
 - Council Member Jeremy Ball
 - Kristin Worthley
- **Mission Hills Community Services District**
 - Director Myron Heavin
- **Vandenberg Village Community Services District**
 - Director Chris Brooks, WMA GSA Chair
- **Santa Ynez River Water Conservation District**
 - Director Steve Jordan
 - Director Art Hibbits, Alternate
- **County of Santa Barbara**
 - Supervisor Joan Hartmann (non-voting Committee Member)
 - Meighan Dietenhoffer (Alternate non-voting Committee Member)

CMA GSA Board

- **City of Buellton**
 - Vice Mayor John Sanchez, CMA GSA Vice Chair
 - Council Member David Silva, Alternate
- **Santa Ynez River Water Conservation District**
 - Director Art Hibbits, CMA GSA Chair
 - Director Cynthia Allen, Alternate
- **County of Santa Barbara**
 - Supervisor Joan Hartmann (non-voting Committee Member)
 - Meighan Diethenoffer (Alternate non-voting Committee Member)

EMA GSA Board

- **City of Solvang**
 - Mayor Mark Infanti
- **Santa Ynez River Water Conservation District ID No. 1**
 - Trustee Brad Joos, EMA GSA Vice Chair
 - Trustee Mike Burchardi, Alternate
- **Santa Ynez River Water Conservation District**
 - Director Brett Marymee, EMA GSA Chair
 - Director Cynthia Allen, Alternate
- **County of Santa Barbara**
 - Supervisor Joan Hartmann
 - Meighan Dietenhoffer, Alternate

Santa Ynez GSA Voting Structure

	WMA	CMA	EMA
County Water Agency	Non-Voting Member	Non-Voting Member	5
SYRWCD	4	1	3
SYRWCD ID 1	-	-	2
City of Lompoc	2	-	-
City of Solvang	-	-	1
City of Buellton	-	1	-
VVCSD	1	-	-
MHCSD	1	-	-
Agriculture	0	0	0

Cost of Decreased Water Availability & Allocation

- Fallowing of land & reduction/shift in crops grown
- Loss of jobs
 - Agricultural, transportation, manufacturing, etc.
- Loss of revenue
- Reduced exports to global and national markets
- Reduction in property values

Be Part of the Solution

- Understand water usage, i.e. water meters
- Maintenance of irrigation systems
- New technology in water saving soil amendments (composts)
- Explore new sources of water for irrigation
- Participate in discussions with GSAs in your basin

Kevin Merrill

Mesa Vineyard Management

San Antonio Basin GSA Board Member

Santa Ynez River Basin CAG Member

kmerrill@mesavineyard.com